



LogiCell[®]

CARTS



WHY LOGIQUIP®?



Healthcare exclusive since 1992, LogiQuip's **Inventory Management Solutions** are designed for Healthcare Professionals looking for a better way to manage supply chain tasks. With **Expert Advice**, **Innovative Solutions**, and **360° Service** that doesn't stop after the sale, LogiQuip's sole purpose is to ensure Healthcare Professionals have the supplies they need when they need them. Partnering with you to design and implement the right solutions, we give you time back to focus on what's important, Patient Care.

EXPERT ADVICE

With an in-depth understanding of the industry and a focus on **Infection Control** and **Lean Processes**, we partner with you to ensure we design the right solutions for you.

INNOVATIVE SOLUTIONS

Designed with an eye on the horizon, LogiQuip has **Innovative Solutions** that evolve with your facility. Our flexible and efficient options help to ensure you have the supplies you need when you need them.

360° SERVICE

LogiQuip's experienced **Sales Representatives** and **Award-Winning Customer Support Team** provide unparalleled service before, during, and after the sale.



WITH LABOR SHORTAGES AND THE EVER-INCREASING DEMAND TO DO MORE WITH LESS, the **LogiQuip Services Team** can help to decrease that burden with turnkey solutions to help ensure you have the supplies you need when you need them.

PROJECT MANAGEMENT

From our initial meeting with you through implementation, a LogiQuip **Services Team Member** will be assigned as your **Project Manager**, working with you every step of the way. Your **Project Manager** will serve as your single point of contact during the project life cycle. Together we will develop and implement project milestones until the work is complete. Contact your **Sales Representative** or call **(800) 665-3760** for more information.

ON-SITE ANALYSIS

Working with your LogiQuip **Representative**, an on-site analysis will be done to ensure that the **Project Manager** has a complete understanding of your current environment. During our on-site analysis we will review your current state, identify gaps, and align on the goals of the project.

PLANNING

Using a mix of innovative products, Lean principles, tried and true methods, and out of the box thinking, LogiQuip will provide a holistic plan with turnkey solutions to minimize downtime while decreasing your storage footprint and increasing PAR levels.

INSTALLATION & CONVERSION

LogiQuip is dedicated to providing on-time delivery, efficient installation, and supply conversion to minimize down time and time on site to get you up and running as quickly as possible.

ONGOING SUPPORT

With the project complete, we want to help you sustain the changes that have been made. With **Annual Inventory Reviews**, **Preventative Maintenance Plans**, and **Field Service** for in warranty and out of warranty repairs, we have you covered to keep things running smoothly.

TABLE OF CONTENTS

TABLE OF CONTENTS

WHY LOGIQUIP®	2
LOGIQUIP SERVICES TEAM	3
LOGICELL® FEATURES & BENEFITS	5
CUSTOM LOGICELL CARTS	6-7
CATHETER CARTS WITH LOGICELL	8-10
SINGLE-WIDE LOGICELL CARTS	11
DOUBLE-WIDE LOGICELL CARTS	12
TRIPLE-WIDE LOGICELL CARTS	13
STAINLESS STEEL CARTS WITH LOGICELL	14-15
KITS & ACCESSORIES FOR LOGICELL.	16-26
DOUBLE-WIDE ACCESSORY KITS	17-19
TRIPLE-WIDE ACCESSORY KITS.	19-21
ACCESSORIES	22-26
MEASURING LOGICELL CARTS	27



LOGIQUIP® LOGICELL® CARTS

LogiCell Cabinets and Carts provide efficient enclosed storage to address safety and infection control concerns. The durable, versatile, and functional **LogiCell Carts** provide a unique **Cell Panel** along the inside walls of our **Carts and Cabinets** that significantly increase storage capacity. With a variety of sizes, security options, and **Accessories**, **LogiCell** is fully modular and can adapt to your needs as supplies, quantities, and processes change.

LOGICELL PANEL

LogiCell's unique **Cell Panel** design allows **Tubs, Wire Baskets, and Shelves** to be placed straight in or at an angle making the **LogiCell System** incredibly efficient. In addition, **Tubs, Wire Baskets, and Shelves** can be extended 80% for maximum visibility of supplies.

DOOR OPTIONS

LogiCell Carts and Cabinets are available with **Tambour or Hinged Glass Doors**. **Tambour Doors** roll into a cassette helping to keep the door clean. Our **Glass Doors** are constructed with an aluminum frame and tempered glass insert, providing visibility to the supplies inside.

RAPID SHIP AVAILABLE

Select **LogiCell Carts** are **In-Stock NOW** and ready to ship! Contact Customer Support or your Sales Representative for more information.

SECURITY OPTIONS

LogiCell Carts and Cabinets are available with a **Key Lock or eLock (Electronic Keyless Lock)** for controlled access supplies. **RFID** access is also available for hands-free access (custom orders).

LIMITED 5-YEAR WARRANTY

LogiQuip products are covered by a **Limited 5-Year Warranty** from date of receipt against defect in materials or workmanship under normal use and service, excluding **Electronic Components, Cart Covers, Custom Products, LogiCell Tambour Doors, Label Holders, and Casters**. During this period, **LogiQuip** will, in its sole discretion, repair defects in materials or workmanship that existed when the product was received or replace the product. Visit LogiQuip.com/Warranty for more details.



DOUBLE-WIDE LOGICELL® CARTS

CUSTOM LOGICELL CARTS

LogiCell Carts and Accessories allow for easy customization of your LogiCell Cart by function, including **Cardiac**, **Laparoscopy**, **Neurology**, and more. Use a mix of **Painted Steel Shelves**, **Wire Baskets**, **Clear Tubs**, and **Catheter Slides** to configure your LogiCell Cart to meet your unique needs.

- Customize your LogiCell Cart(s) using **Shells** from pages 11-15, **Accessory Kits** from pages 16-21, and **Accessories** from pages 22-26.
- The LogiCell Carts shown on pages 6-7 are all available with **Hinged Glass Doors**
- **Double Carts** are 28" D x 41" W x 80" H
- **Triple Carts** are 28" D x 58" W x 80" H



Cardiac Cart



Laparoscopy Cart



Neurology Cart



Ophthalmology/ENT Cart

TRIPLE WIDE LOGICELL® CARTS



Arthroscopy Cart



Drape/Pack Cart



Laparoscopy Cart



Orthopedic 2 Cart

SINGLE COLUMN DOUBLE-WIDE CATHETER CARTS WITH LOGICELL®

PRE-CONFIGURED CATHETER CARTS WITH LOGICELL

- Catheter Carts come complete with Accessories
- Dividers are included with most Tubs, Wire Baskets, and Shelves
- Customize your LogiCell Cart(s) using Shells from pages 11-15, Accessory Kits from pages 16-21, and Accessories from pages 22-26.
- Double Carts are 28" D x 41" W x 80" H

SINGLE COLUMN DOUBLE-WIDE CATHETER CARTS WITH LOGICELL	
MODEL	DESCRIPTION
2651DTTGKLCAT1	Seven (7) 9-Hook Catheter Slides, Tambour Door
2651DTHGKLCAT1	Seven (7) 9-Hook Catheter Slides, Hinged Glass Doors
2651DTTGKLCAT2	Seven (7) 9-Hook Catheter Slides, Top Shelf w/5 Dividers, Tambour Door
2651DTHGKLCAT2	Seven (7) 9-Hook Catheter Slides, Top Shelf w/5 Dividers, Hinged Glass Doors
2651DTTGKLCAT3	Top Shelf with 5 Dividers, Catheter Box, 22 Cells, Tambour Door
2651DTHGKLCAT3	Top Shelf with 5 Dividers, Catheter Box, 22 Cells, Hinged Glass Doors
2651DTTGKLCAT4	Five (5) Shelves with 20 Dividers, Catheter Box, 22 Cells, Tambour Door
2651DTHGKLCAT4	Five (5) Shelves with 20 Dividers, Catheter Box, 22 Cells, Hinged Glass Doors
2651DTHGKLCBD	Double Catheter Box with 16 Dividers, 44 Cells, Key Lock, Hinged Glass Doors



2651DTTGKLCAT1



2651DTTGKLCAT2



2651DTTGKLCAT3

DOUBLE COLUMN DOUBLE-WIDE CATHETER CARTS WITH LOGICELL®



DOUBLE COLUMN DOUBLE-WIDE CATHETER CARTS WITH LOGICELL

MODEL	DESCRIPTION
2652DTTGKLCAT5	Nine (9) Catheter Slides, Two (2) Shelves w/ (2) Dividers, Tambour Door, Key Lock
2652DTHGKLCAT5	Nine (9) 9-Hook Catheter Slides, Top Shelf w/2 Dividers, Hinged Glass Doors
2652DTTGKLCAT6	Six (6) 9-Hook Catheter Slides , two (2) 24" Shelves - each w/2 Dividers, one (1) 3" and one (1) 5" Clear Tub w/2 Long and 2 Short Dividers, two (2) 3", two (2) 5" Wire Baskets each w/ 2 Long and 2 Short Dividers, one (1) 8" Wire Basket, Tambour Door
2652DTHGKLCAT6	Six (6) 9-Hook Catheter Slides , two (2) 24" Shelves - each w/2 Dividers, one (1) 3" and one (1) 5" Clear Tub w/2 Long and 2 Short Dividers, two (2) 3", two (2) 5" Wire Baskets each w/ 2 Long and 2 Short Dividers, one (1) 8" Wire Basket, Hinged Glass Doors
2652DTTGKLCAT7	Three (3) 9-hook Catheter slides, 5 Shelves w/(10) Dividers, Tambour Door
2652DTHGKLCAT7	Three (3) 9-hook Catheter slides, 5 Shelves w/(10) Dividers, Hinged Glass Doors
2652DTTGKLCAT8	6 Shelves, one (1) 3", four (4) 5" and two (2) 8" Wire Baskets, one (1) 3", one (1) 5" and one (1) 8" Clear Plastic Tubs, Tambour Door
2652DTHGKLCAT8	6 Shelves, one (1) 3", four (4) 5" and two (2) 8" Wire Baskets, one (1) 3", one (1) 5" and one (1) 8" Clear Plastic Tubs, Hinged Glass Doors
2652DTHGKLCBS	Single Catheter Box with 8 Dividers, 44 Cells, Key Lock, Hinged Glass Doors



2652DTTGKLCAT5*



2652DTHGKLCAT7*

*Dividers not shown

TRIPLE-WIDE CATHETER CARTS WITH LOGICELL®

PRE-CONFIGURED CATHETER CARTS WITH LOGICELL

- Catheter Carts come complete with Accessories
- Dividers are included with most Tubs, Wire Baskets, and Shelves
- Customize your LogiCell Cart(s) using Shells from pages 11-15, Accessory Kits from pages 16-21, and Accessories from pages 22-26.
- Triple Carts are 28" D x 58" W x 80" H

TRIPLE-WIDE CATHETER CARTS WITH LOGICELL	
MODEL	DESCRIPTION
2653TTTGKLCAT1	Nine (9) 9-Hook Catheter Slides, Tambour Door, Key Lock
2653TTHGKLCAT1	Nine (9) 9-Hook Catheter Slides, Hinged Glass Doors on right side, Key Lock
2653TTTGKLCAT3	Three (3) 9-Hook Catheter Slides, 3 Metal Shelves w/2 Dividers, four (4) 3" and two (2) 5" Clear Tub w/2 Long and 2 Short Dividers, four (4) 3", two and 5" Wire Baskets each w/ 2 Long and 2 Short Dividers, one (1) 8" Wire Basket, 1 Locking Drawer, Tambour Door, Key Lock
2653TTHGKLCAT3	Three (3) 9-Hook Catheter Slides, 3 Metal Shelves w/2 Dividers, four (4) 3" and two (2) 5" Clear Tub w/2 Long and 2 Short Dividers, four (4) 3", two and 5" Wire Baskets each w/ 2 Long and 2 Short Dividers, one (1) 8" Wire Basket, 1 Locking Drawer, Hinged Glass Doors, Key Lock
2653TTHGKLCBS	Triple Column, Single Catheter Box, Hinged Glass Door, Key Lock
2652TTLCTGKLCAT2	Single Column left, Double Column right, 5 Shelves w/Dividers, two (2) 3", one (1) 5" and one (1) 8" Wire Baskets w/Dividers, two (2) 3" and one (1) 5" Clear Tub w/Dividers, Fourteen (14) 9-Hook Catheter Slides, Tambour Door
2652TTLCHGKLCAT2	Single Column left, Double Column right, 5 Shelves w/Dividers, two (2) 3", one (1) 5" and one (1) 8" Wire Baskets w/Dividers, two (2) 3" and one (1) 5" Clear Tub w/Dividers, (14) 9-Hook Catheter Slides, Hinged Glass Doors on right side
2652TTLCTGKLCAT4	Single Column left, Double Column right, 1 Shelf w/Dividers, two (2) 3", two (2) 5" and one (1) 8" Wire Baskets w/Dividers, one (1) 3" and one (1) 5" Clear Tub w/Dividers, Seven (7) 9-Hook Catheter Slides, Tambour Door
2652TTLCHGKLCAT4	Single Column left, Double Column right, 1 Shelf w/Dividers, two (2) 3", two (2) 5" and one (1) 8" Wire Baskets w/Dividers, one (1) 3" and one (1) 5" Clear Tub w/Dividers, Seven (7) 9-Hook Catheter Slides, Hinged Glass Doors on right side
2652TTLCHGKLCBD	Single Column left, Double Column right, Double Catheter Box, Hinged Glass Door, Key Lock
2652TTLCTGKLCBD	Single Column left, Double Column right, Double Catheter Box, Tambour Door, Key Lock
2652TTRCHGKLCBD	Double Column left, Single Column right, Double Catheter Box, Hinged Glass Doors, Key Lock



Model #
2653TTTGKLCAT1



Model #
2653TTHGKLCAT3



Model #
2652TTLCHGKLCAT2

SINGLE- & DOUBLE-WIDE LOGICELL® CARTS

✚ SINGLE-WIDE, ONE COLUMN

These **Single-Wide, One Column Carts** are available in $\frac{3}{4}$ and **Tall Heights**, are ideal for applications demanding high storage volume with limited floor space, and are sized to fit one narrow column of cell system **Accessories**. The ceiling is pre-set to hold **Catheter Slides** and is available with either **Key Lock** or **eLock**.

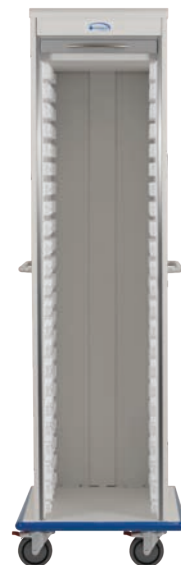
SINGLE-WIDE ONE COLUMN $\frac{3}{4}$ HEIGHT	
MODEL	DESCRIPTION
2651SQTGKL	Tambour Door, Key Lock
2651SQTGEL	Tambour Door, eLock
2651SQHGKL	Glass Door, Key Lock
2651SQHGEL	Glass Door, eLock

SINGLE-WIDE ONE COLUMN TALL HEIGHT	
MODEL	DESCRIPTION
2651STTGKL	Tambour Door, Key Lock
2651STTGEL	Tambour Door, eLock
2651STRGKL	Glass Door, Hinged Right, Key Lock
2651STLGKL	Glass Door, Hinged Left, Key Lock
2651STRGEL	Glass Door, Hinged Right, eLock
2651STLGEL	Glass Door, Hinged Left, eLock

- $\frac{3}{4}$ Height Carts 28" D x 24.5" W x 62" H, 16 usable slots for Accessories
- Tall Height Carts are 28" D x 24.5" W x 80" H, 22 usable slots for Accessories
- Carts accept Accessories for 24" D x 16" W columns



Model #
2651SQTGKL



Model #
2651STTGKL

✚ DOUBLE-WIDE, ONE COLUMN

These **Double-Wide, One Column Carts** are available in $\frac{1}{2}$, $\frac{3}{4}$, and **Tall Heights**, and are sized to fit one column of wide cell system **Accessories**. The ceiling is pre-set to hold **Catheter Slides** and is available with **Key Lock** or **eLock**.

DOUBLE-WIDE ONE COLUMN $\frac{1}{2}$ HEIGHT	
MODEL	DESCRIPTION
2651DHTGKL	Tambour Door, 9 Slots/Column, Key Lock
2651DHTGEL	Tambour Door, 9 Slots/Column, eLock
2651DHHGKL	Hinged Glass Doors 9, Slots/Column, Key Lock
2651DHHGEL	Hinged Glass Doors 9, Slots/Column, eLock

DOUBLE-WIDE ONE COLUMN $\frac{3}{4}$ HEIGHT	
MODEL	DESCRIPTION
2651DQTGKL	Tambour Door, 16 Slots, Key Lock
2651DQTGEL	Tambour Door, 16 Slots, eLock
2651DQHGKL	Hinged Glass Doors, 16 Slots, Key Lock
2651DQHGEL	Hinged Glass Doors, 16 Slots, eLock

DOUBLE-WIDE ONE COLUMN TALL HEIGHT	
MODEL	DESCRIPTION
2651DTTGKL	Tambour Door, 22 Slots, Key Lock
2651DTTGEL	Tambour Door, 22 Slots, eLock
2651DTHGKL	Hinged Glass Doors, 22 Slots, Key Lock
2651DTHGEL	Hinged Glass Doors, 22 Slots, eLock

- $\frac{1}{2}$ Height Carts are 28" D x 41" W x 42" H
- $\frac{3}{4}$ Height Carts are 28" D x 41" W x 62" H
- Tall Height Carts are 28" D x 41" W x 80" H



Model #
2651DQHGKL



Model #
2651DTTGEL

DOUBLE-WIDE LOGICELL® CARTS

DOUBLE-WIDE, TWO COLUMNS

These **Double-Wide, Two Column Carts** are available in $\frac{1}{2}$, $\frac{3}{4}$, and **Tall Heights**, and are sized to fit two columns of wide cell system **Accessories**. Each column is 15.75" between the cell panels. The ceiling is pre-set to hold **Catheter Slides** and is available with either **Key Lock** or **eLock**.

- $\frac{1}{2}$ Height Carts are 28" D x 40" W x 42" H
- $\frac{3}{4}$ Height Carts are 28" D x 40" W x 62" H
- Tall Height Carts are 28" D x 40" W x 80" H

DOUBLE-WIDE TWO COLUMNS $\frac{1}{2}$ HEIGHT	
MODEL	DESCRIPTION
2652DHTGKL	Tambour Door, 9 Slots/Column, Key Lock
2652DHTGEL	Tambour Door, 9 Slots/Column, eLock
2652DHHGKL	Hinged Glass Doors, 9 Slots/Column, Key Lock
2652DHHGEL	Hinged Glass Doors, 9 Slots/Column, eLock

DOUBLE-WIDE TWO COLUMNS $\frac{3}{4}$ HEIGHT	
MODEL	DESCRIPTION
2652DQTGKL	Tambour Door, 16 Slots/Column, Key Lock
2652DQTGEL	Tambour Door, 16 Slots/Column, eLock
2652DQHGKL	Hinged Glass Doors, 16 Slots/Column, Key Lock
2652DQHGEL	Hinged Glass Doors, 16 Slots/Column, eLock

DOUBLE-WIDE TWO COLUMNS TALL HEIGHT	
MODEL	DESCRIPTION
2652DTTGKL	Tambour Door, 22 Slots/Column, Key Lock
2652DTTGEL	Tambour Door, 22 Slots/Column, eLock
2652DTHGKL	Hinged Glass Doors, 22 Slots/Column, Key Lock
2652DTHGEL	Hinged Glass Doors, 22 Slots/Column, eLock



Model # 2652DHHGKL
With Plastic Top Model # 2650DHT



Model # 2652DTTGEL
Tall Height

OPTIONS & ACCESSORIES

- Accepts **Accessories** for 24"D x 16" W columns
- **Double Sloped Top** is available: 2650ST6D
- **Plastic Top** for Double Width $\frac{1}{2}$ Height Cart: 2650DHT

TRIPLE-WIDE LOGICELL® CARTS

TRIPLE-WIDE, TWO COLUMNS

These Triple-Wide Two Column Carts are sized to fit standard cell system. Accessories are available for both Single and Double-Wide Columns. The ceiling is pre-set to hold Catheter Slides and is available with either Key Lock or eLock.

- Carts are 28" D x 58" W x 80" H; 22 usable slots for Accessories
- Accepts Accessories for 24" D x 16" W and 24" D x 36" W columns
- Triple Slope Top is available: 2650ST6T

TRIPLE-WIDE TWO COLUMNS	
MODEL	DESCRIPTION
2652TTLCTGKL	Tambour Door, 22 Slots/Column, Small Column on Left Side, Key Lock
2652TTLCTGEL	Tambour Door, 22 Slots/Column, Small Column on Left Side, eLock
2652TTRCTGKL	Tambour Door, 22 Slots/Column, Small Column on Right Side, Key Lock
2652TTRCTGEL	Tambour Door, 22 Slots/Column, Small Column on Right Side, eLock
2652TTLCHGKL	Hinged Glass Doors, 22 Slots/Column, Small Column on Left Side, Key Lock
2652TTLCHGEL	Hinged Glass Doors, 22 Slots/Column, Small Column on Left Side, eLock
2652TTRCHGKL	Hinged Glass Doors, 22 Slots/Column, Small Column on Right Side, Key Lock
2652TTRCHGEL	Hinged Glass Doors, 22 Slots/Column, Small Column on Right Side, eLock



Model # 2652TTRCTGKL
Shown with Optional Shelves

TRIPLE-WIDE TWO COLUMNS SPLIT	
MODEL	DESCRIPTION
2652TTRCBSHGKL	Hinged Glass Doors, 22 Slots/Column, Wide Column Split on Left Side, Key Lock
2652TTRCBSHGEL	Hinged Glass Doors, 22 Slots/Column, Wide Column Split on Left, eLock
2652TTLCBSHGKL	Hinged Glass Doors, 22 Slots/Column, Wide Column Split on Right Side, Key Lock
2652TTLCBSHGEL	Hinged Glass Doors, 22 Slots/Column, Wide Column Split on Right Side, eLock



Model # 2653TTTGKL

TRIPLE-WIDE THREE COLUMNS	
MODEL	DESCRIPTION
2653TTTGKL	Tambour Door, 22 Slots/Column, 3 Columns, Key Lock
2653TTTGEL	Tambour Door, 22 Slots/Column, 3 Columns, eLock
2653TTHGKL	Hinged Glass Doors, 22 Slots/Column, 3 Columns, Key Lock
2653TTHGEL	Hinged Glass Doors, 22 Slots/Column, 3 Columns, eLock
2653TTLGKL	Hinged Glass Doors, 66 Cells, 3 Columns, Key Lock
2653TTLGEL	Hinged Glass Doors, 66 Cells, 3 Columns, eLock
2653TTRGKL	Hinged Glass Doors, 66 Cells, 3 Columns, Key Lock
2653TTRGEL	Hinged Glass Doors, 66 Cells, 3 Columns, eLock

STAINLESS STEEL LOGICELL® CARTS

STAINLESS STEEL SINGLE-WIDE, ONE COLUMN

These **Stainless Steel Single-Wide, One Column Carts** are sized to fit standard cell system **Accessories**, have 23 usable slots, and come standard with a **Glass Hinged Door**.

- **Carts** are 18" D x 27" W x 78" H

SINGLE-WIDE	
MODEL	DESCRIPTION
22381SSLG	Left Hinge Glass Door, 23 Slots
22381SSRG	Right Hinge Glass Door, 23 Slots



Model #
22381SSLG

STAINLESS STEEL DOUBLE-WIDE

These **Stainless Steel Double-Wide, One and Two Column Carts** are sized to fit standard cell system **Accessories**, come standard with double **Glass Hinged Doors**, and have 23 wide slots per column.

- **Carts** are 26" D x 36" W x 78" H

DOUBLE-WIDE	
MODEL	DESCRIPTION
24581SSHG*	Double Glass Hinged Doors, 16 Slots/Column, 1 Column
24582SSHG	Double Glass Hinged Doors, 16 Slots/Column, 2 Columns

*Can use Shelves and Catheter Slides ONLY with this Cart, not Baskets or Bins.



Model #
24582SSHG

OPTIONS & ACCESSORIES

- **LogiCell Tubs, Baskets, Shelves**, and other **Accessories** are sold separately. See pages 22-26.
- **Single-Width Carts** accommodate **Accessories** 24" D x 16" W
- **Double-Width Carts** accommodate **Accessories** 24" D x 16" W or 24" D x 36" W based on the number of columns
- Add **FB** to the product number for **Full Base, Bumpers, and Handles**
- Add **ST** to the product number for **Sloped Top**

STAINLESS STEEL LOGICELL® CARTS

STAINLESS STEEL TRIPLE-WIDE CARTS

These **Stainless Steel Triple-Wide Carts** are sized to fit standard cell system **Accessories**, have 23 usable slots per column, and come standard with triple **Glass Hinged Doors**.

- **Carts** are 26" D x 55" W x 78" H

STAINLESS STEEL TRIPLE-WIDE	
MODEL	DESCRIPTION
24882RCSSHG	Triple Glass Hinged Doors, Wide Column on the left, Standard Column on the right, 23 Slots/Column
24882LCSSHG	Triple Glass Hinged Doors, Wide Column on the right, Standard Column on the left, 23 Slots/Column
24883SSHG	Triple Glass Hinged Doors, Three (3) Standard Columns, 23 Slots/Column (69 Slots total)



Model #
24882RCSSHG

OPTIONS & ACCESSORIES

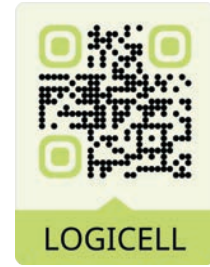
- **LogiCell Tubs, Baskets, Shelves**, and other **Accessories** are sold separately. See pages 22-26.
- **Triple-Width Carts** accommodate **Accessories** 24" D x 16" W or 24" D x 36" W based on the number of columns.
- Add **FB** to the product number for **Full Base, Bumpers, and Handles**
- Add **ST** to the product number for **Sloped Top** (shown at right)

Sloped Top
Option

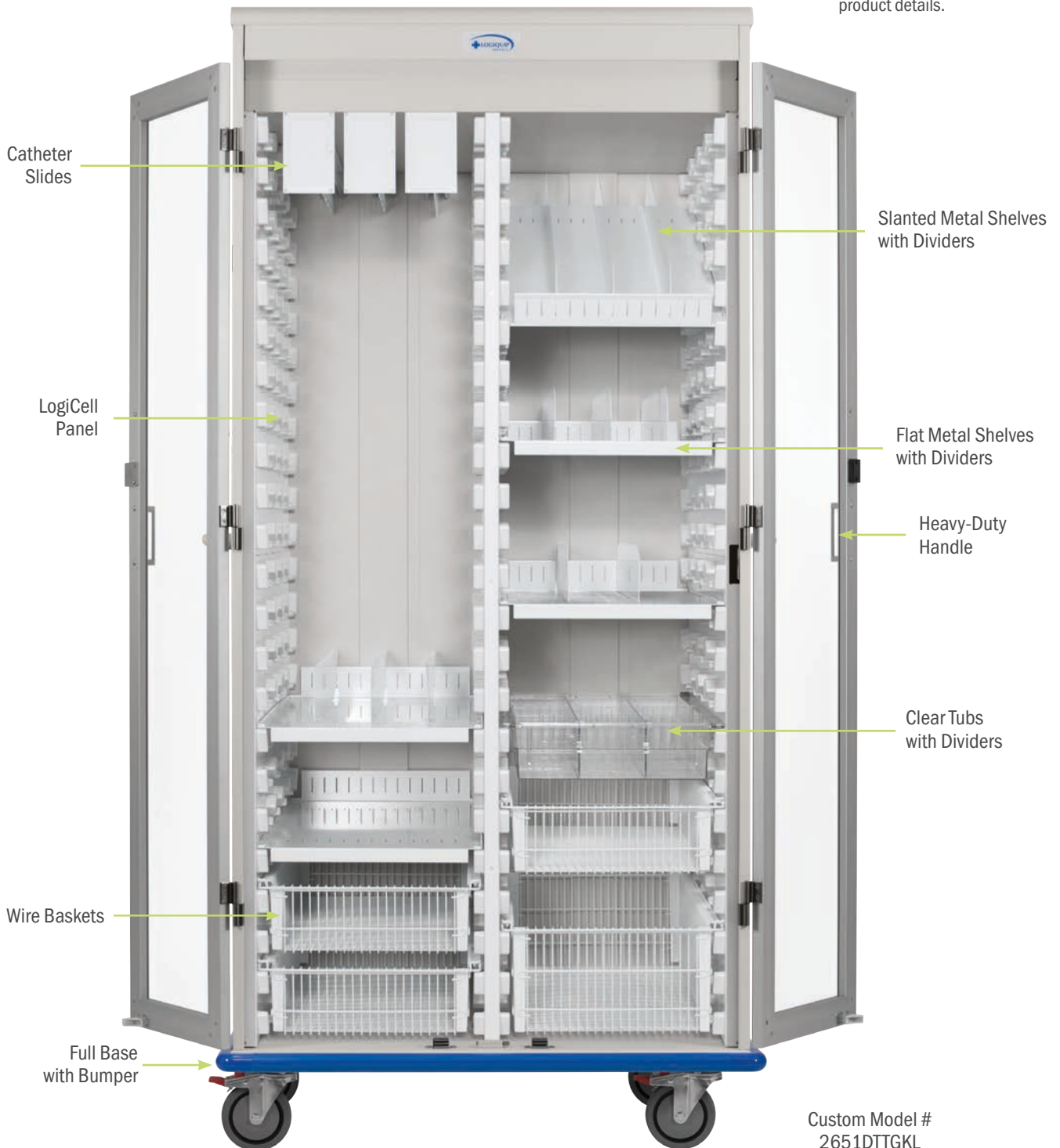


KITS & ACCESSORIES FOR LOGICELL CARTS

LogiCell Accessories and Accessory Kits including Wire Basket, Clear Tubs, Metal Shelves, and Catheter Slides are available to customize your LogiCell Carts. With our unique LogiCell Panel along the interior walls, Wire Baskets, Clear Tubs, and Metal Shelves can be placed in straight or on an angle to significantly increase storage capacity.



Scan QR Code to see product details.



Custom Model #
2651DTTGKL

LOGICELL® DOUBLE-WIDE CART ACCESSORY KITS

ACCESSORY KITS FOR LOGICELL DOUBLE-WIDE, TWO COLUMN CARTS

LogiCell Accessory Kits for Double-Wide, Two Column Carts (21" D x 48" W x 80" H) offer multiple turnkey options thoughtfully designed by function including **Arthroscopy**, **Cardio**, **Cysto**, **Ortho**, and **Vascular**. For additional options to fit your needs, you can customize your cart with **Wire Baskets**, **Clear Tubs**, **Metal Shelves**, **Catheter Slides**, **Catheter Boxes**, **Suture Racks**, and **Locking Drawers** to create the ideal solution (see pages 22-26). Carts are sold separately.

ARTHROSCOPY DOUBLE-WIDE CART ACCESSORY KIT

ARTHROSCOPY DOUBLE-WIDE CART ACCESSORY KIT INCLUDES				
MODEL	DESCRIPTION	QTY	D x W x H - IN.	
2416SHC-2	Steel Shelf w/Divider Slots, Frosty White	6	24 x 16 x 2.5	
244DIV	Steel Divider, Frosty White	12	24 W x 4 H	
5B	Wire Basket, 2 Cell, White	6	23.6 x 15.75 x 5	
5BDL	Long Wire Divider For 5B, White	6	-	
5BDS	Short Wire Divider For 5B, White	6	-	
4TCL	Clear Tub, 2 Cell	1	23.6 x 15.7 x 4	
4TDLCL	Long Clear Plastic Divider For 4TCL	2	-	
4TDSCL	Short Clear Plastic Divider For 4TCL	2	-	
8B	Wire Basket, 3 Cell, White	1	23.6 x 15.75 x 8	
8BDL	Long Wire Divider For 8B, White	1	-	
8BDS	Short Wire Divider For B, White	1	-	
LC-STOP	Safety Stop for Clear Trays/Tubs (set of 2)	1	-	



2652DART
Arthroscopy Cart

CARDIO DOUBLE-WIDE CART ACCESSORY KIT

CARDIO DOUBLE-WIDE CART ACCESSORY KIT INCLUDES				
MODEL	DESCRIPTION	QTY	D x W x H - IN.	
2416SHC-2	Steel Shelf w/13 Divider Slots, Frosty White	5	24 x 16 x 2.5	
244DIV	Steel Divider, Frosty White	4	24 W x 4 H	
2TCL	Clear Tub, 1 Cell	2	23.6 x 15.7 x 2	
2TDLCL	Long Clear Plastic Divider For 2TCL	4	-	
2TDSCL	Short Clear Plastic Divider For 2TCL	4	-	
5B	Wire Basket, 2 Cell, White	2	23.6 x 15.75 x 5	
5BDL	Long Wire Divider For 5B, White	2	-	
5BDS	Short Wire Divider For 5B, White	2	-	
4TCL	Clear Tub, 2 Cell	1	23.6 x 15.7 x 4	
4TDLCL	Long Clear Plastic Divider For 4TCL	2	-	
4TDSCL	Short Clear Plastic Divider For 4TCL	2	-	
8B	Wire Basket, 3 Cell, White	2	23.6 x 15.75 x 8	
8BDL	Long Wire Divider For 8B, White	2	-	
8BDS	Short Wire Divider For B, White	2	-	
LC-STOP	Safety Stop for Clear Trays/Tubs (set of 2)	3	-	



2652DCARD
Cardio Cart

LOGICELL® DOUBLE-WIDE CART ACCESSORY KITS

✚ CYSTO DOUBLE-WIDE CART ACCESSORY KIT

CYSTO DOUBLE-WIDE CART ACCESSORY KIT INCLUDES				
MODEL	DESCRIPTION	QTY	D x W x H - IN.	
2416SHC-2	Steel Shelf w/Divider Slots, Frosty White	5	24 x 16 x 2.5	
244DIV	Steel Divider, Frosty White	12	24 W x 4 H	
5B	Wire Basket, 2 Cell, White	3	23.6 x 15.75 x 5	
5BDL	Long Wire Divider For 5B, White	6	—	
5BDS	Short Wire Divider For 5B, White	6	—	
4TCL	Clear Tub, 2 Cell	1	23.6 x 15.7 x 4	
8B	Wire Basket, 3 Cell, White	1	23.6 x 15.75 x 8	
CAT24HD	Heavy-Duty, Catheter Slide Shelf, White Epoxy-Coated, 9 Hooks	3	24 D	
LC-STOP	Safety Stop for Clear Trays/Tubs (set of 2)	1	—	



2652DCYST
Cysto Cart

✚ ORTHO DOUBLE-WIDE CART ACCESSORY KIT

ORTHO DOUBLE-WIDE CART ACCESSORY KIT INCLUDES				
MODEL	DESCRIPTION	QTY	D x W x H - IN.	
2416SHC-2	Steel Shelf w/13 Divider Slots, Frosty White	4	24 x 16 x 2.5	
2B	Wire Basket, 1 Cell, White	1	23.6 x 15.75 x 2.25	
2BDL	Long Wire Divider For 2B, White	1	—	
2BDS	Short Wire Divider For 2B, White	2	—	
2TCL	Clear Tub, 1 Cell	1	23.6 x 15.7 x 2	
2TDLCL	Long Clear Plastic Divider For 2TCL	1	—	
2TDSCL	Short Clear Plastic Divider For 2TCL	2	—	
5B	Wire Basket, 2 Cell, White	10	23.6 x 15.75 x 5	
5BDL	Long Wire Divider For 5B, White	10	—	
5BDS	Short Wire Divider For 5B, White	10	—	
4TCL	Clear Tub, 2 Cell	3	23.6 x 15.7 x 4	
4TDLCL	Long Clear Plastic Divider For 4TCL	3	—	
4TDSCL	Short Clear Plastic Divider For 4TCL	3	—	
LC-STOP	Safety Stop for Clear Trays/Tubs (set of 2)	4	—	



2652DORTH
Ortho Cart



LOGICELL® DOUBLE-WIDE CART ACCESSORY KITS

VASCULAR DOUBLE-WIDE CART ACCESSORY KIT

VASCULAR DOUBLE-WIDE CART ACCESSORY KIT INCLUDES				
MODEL	DESCRIPTION	QTY	D x W x H - IN.	
2416SHC-2	Steel Shelf w/Divider Slots, Frosty White	3	24 x 16 x 2.5	
244DIV	Steel Divider, Frosty White	6	24 W x 4 H	
5B	Wire Basket, 2 Cell, White	2	23.6 x 15.75 x 5	
5BDL	Long Wire Divider For 5B, White	2	—	
5BDS	Short Wire Divider For 5B, White	2	—	
4TCL	Clear Tub, 2 Cell	1	23.6 x 15.7 x 4	
4TDLCL	Long Clear Plastic Divider For 4TCL	1	—	
4TDSCL	Short Clear Plastic Divider For 4TCL	1	—	
8B	Wire Basket, 3 Cell, White	3	23.6 x 15.75 x 8	
CAT24HD	Heavy-Duty, Catheter Slide Shelf, White Epoxy-Coated, 9 Hooks	3	24 D	
LC-STOP	Safety Stop for Clear Trays/Tubs (set of 2)	1	—	



2652DVASC
Vascular Cart

LOGICELL® TRIPLE-WIDE CART ACCESSORY KITS

TRIPLE-WIDE SUPPLY CARTS

LogiCell Accessory Kits for Triple-Wide Carts (28" D x 58" W x 80" H) are available in several configurations including Arthroscopy, Cardio, Cysto, Ortho, and Vascular. Thoughtfully designed by function, these Accessory Kits make it easy to set up your LogiCell Cart. For additional options to fit your needs, Wire Baskets, Clear Tubs, Metal Shelves, Catheter Slides, Catheter Boxes, Suture Racks, and Locking Drawers to create the ideal solution (see pages 22-26). Carts are sold separately.

ARTHROSCOPY TRIPLE-WIDE CART ACCESSORY KIT

ARTHROSCOPY TRIPLE-WIDE CART ACCESSORY KIT INCLUDES				
MODEL	DESCRIPTION	QTY	D x W x H - IN.	
2416SHC-2	Steel Shelf w/Divider Slots, Frosty White	8	24 x 16 x 2.5	
244DIV	Steel Divider, Frosty White	16	24 W x 4 H	
5B	Wire Basket, 2 Cell, White	8	23.6 x 15.75 x 5	
4TCL	Clear Tub, 2 Cell	2	23.6 x 15.7 x 4	
4TDLCL	Long Clear Plastic Divider For 4TCL	4	—	
4TDSCL	Short Clear Plastic Divider For 4TCL	4	—	
8B	Wire Basket, 3 Cell, White	3	23.6 x 15.75 x 8	
LC-STOP	Safety Stop for Clear Trays/Tubs (set of 2)	2	—	



2653TART
Arthroscopy Cart

LOGICELL® TRIPLE-WIDE CART ACCESSORY KITS

CARDIO TRIPLE-WIDE CART ACCESSORY KIT

CARDIO TRIPLE-WIDE CART ACCESSORY KIT INCLUDES			
MODEL	DESCRIPTION	QTY	D x W x H - IN.
2416SHC-2	Steel Shelf w/13 Divider Slots, Frosty White	6	24 x 16 x 2.5
244DIV	Steel Divider, Frosty White	8	24 W x 4 H
2TCL	Clear Tub, 1 Cell	2	23.6 x 15.7 x 2
2TDLCL	Long Clear Plastic Divider For 2TCL	6	—
2TDSCCL	Short Clear Plastic Divider For 2TCL	6	—
5B	Wire Basket, 2 Cell, White	5	23.6 x 15.75 x 5
5BDL	Long Wire Divider For 5B, White	5	—
5BDS	Short Wire Divider For 5B, White	5	—
4TCL	Clear Tub, 2 Cell	3	23.6 x 15.7 x 4
4TDLCL	Long Clear Plastic Divider For 4TCL	3	—
4TDSCCL	Short Clear Plastic Divider For 4TCL	3	—
8B	Wire Basket, 3 Cell, White	2	23.6 x 15.75 x 8
8BDL	Long Wire Divider For 8B, White	2	—
8BDS	Short Wire Divider For 8B, White	2	—
8TCL	Clear Tub, 2 Cell	2	23.6 x 15.7 x 8
8TDLCL	Long Wire Divider For 8TCL, White	4	—
8TDSCCL	Short Wire Divider 8TCL, White	4	—
LC-STOP	Safety Stop for Clear Trays/Tubs (set of 2)	7	—



2653TCARD
Cardio Cart

CYSTO TRIPLE-WIDE CART ACCESSORY KIT

CYSTO TRIPLE-WIDE CART ACCESSORY KIT INCLUDES			
MODEL	DESCRIPTION	QTY	D x W x H - IN.
2416SHC-2	Steel Shelf w/Divider Slots, Frosty White	7	24 x 16 x 2.5
244DIV	Steel Divider, Frosty White	14	24 W x 4 H
2B	Wire Basket, 1 Cell, White	6	23.6 x 15.75 x 2.25
2BDL	Long Wire Divider For 2B, White	6	—
2BDS	Short Wire Divider For 2B, White	6	—
2TCL	Clear Tub, 1 Cell	5	23.6 x 15.75 x 5
2TDLCL	Long Clear Plastic Divider For 2TCL	5	—
2TDSCCL	Short Clear Plastic Divider For 2TCL	5	—
5B	Wire Basket, 2 Cell, White	3	23.6 x 15.75 x 5
5BDL	Long Wire Divider For 5B, White	3	—
5BDS	Short Wire Divider For 5B, White	3	—
CAT24HD	Heavy-Duty, Catheter Slide Shelf, White Epoxy-Coated, 9 Hooks	3	24 D
LC-STOP	Safety Stop for Clear Trays/Tubs (set of 2)	5	—



2653TCYST
Cysto Cart

LOGICELL® TRIPLE-WIDE CART ACCESSORY KITS

ORTHO TRIPLE-WIDE CART ACCESSORY KIT

OTHRO TRIPLE-WIDE CART ACCESSORY KIT INCLUDES				
MODEL	DESCRIPTION	QTY	D x W x H - IN.	
2416SHC-2	Steel Shelf w/Divider Slots, Frosty White	6	24 x 16 x 2.5	
244DIV	Steel Divider, Frosty White	9	24 W x 4 H	
2B	Wire Basket, 1 Cell, White	1	23.6 x 15.75 x 2.25	
2BDL	Long Wire Divider For 2B, White	1	—	
2BDS	Short Wire Divider For 2B, White	1	—	
2TCL	Clear Tub, 1 Cell	1	23.6 x 15.75 x 5	
2TDLCL	Long Clear Plastic Divider For 2TCL	1	—	
2TDSCL	Short Clear Plastic Divider For 2TCL	1	—	
5B	Wire Basket, 2 Cell, White	7	23.6 x 15.75 x 5	
5BDL	Long Wire Divider For 5B, White	7	—	
5BDS	Short Wire Divider For 5B, White	7	—	
4TCL	Clear Tub, 2 Cell	4	23.6 x 15.7 x 4	
4TDLCL	Long Clear Plastic Divider For 4TCL	4	—	
4TDSCL	Short Clear Plastic Divider For 4TCL	4	—	
LC-STOP	Safety Stop for Clear Trays/Tubs (set of 2)	5	—	



2653TORTH
Ortho Cart

VASCULAR TRIPLE-WIDE CART ACCESSORY KIT

VASCULAR TRIPLE-WIDE CART ACCESSORY KIT INCLUDES				
MODEL	DESCRIPTION	QTY	D x W x H - IN.	
2416SHC-2	Steel Shelf w/Divider Slots, Frosty White	12	24 x 16 x 2.5	
244DIV	Steel Divider, Frosty White	14	24 W x 4 H	
2B	Wire Basket, 1 Cell, White	4	23.6 x 15.75 x 2.25	
2BDL	Long Wire Divider For 2B, White	8	—	
2BDS	Short Wire Divider For 2B, White	8	—	
2TCL	Clear Tub, 1 Cell	3	23.6 x 15.75 x 5	
2TDLCL	Long Clear Plastic Divider For 2TCL	6	—	
2TDSCL	Short Clear Plastic Divider For 2TCL	6	—	
5B	Wire Basket, 2 Cell, White	4	23.6 x 15.75 x 5	
5BDL	Long Wire Divider For 5B, White	4	—	
5BDS	Short Wire Divider For 5B, White	4	—	
4TCL	Clear Tub, 2 Cell	3	23.6 x 15.7 x 4	
4TDLCL	Long Clear Plastic Divider For 4TCL	3	—	
4TDSCL	Short Clear Plastic Divider For 4TCL	3	—	
LC-STOP	Safety Stop for Clear Trays/Tubs (set of 2)	6	—	



2653TVASC
Vascular Cart

CLEAR TUBS & DIVIDERS

These Polycarbonate (PC) Clear Tubs for LogiCell have an exterior dimension of 24" D x 16" W, and are used to store supplies, typically smaller or those with a concern of spills. Each Tub includes two (2) Safety Stops and can be used with standard and wide units. The Clear Dividers can be installed to segment the Tub for optimization of organization.

TUBS* WITH SAFETY STOPS

MODEL	DESCRIPTION	SLOTS USED
2TCL16	For 16" D x 24" W Columns	1, 4 if slanted
2TCL24	For 24" D x 16" W Columns	1, 4 if slanted
4TCL16	For 24" D x 16" W Columns	2, 5 if slanted
4TCL24	For 16" D x 24" W Columns	2, 5 if slanted
8TCL16	For 24" D x 16" W Columns	3, 6 if slanted
8TCL24	For 16" D x 24" W Columns	3, 6 if slanted



DIVIDERS

MODEL	DESCRIPTION	D x H - IN.
2TDLCL	For 2" Tub, Long	22 x 2
2TDSCL	For 2" Tub, Short	14 x 2
4TDLCL	For 4" Tub, Long	22 x 4
4TDSCL	For 4" Tub, Short	14 x 4
8TDLCL	For 8" Tub, Long	22 x 8
8TDSCL	For 8" Tub, Short	14 x 8



TUB & DIVIDER KITS*

MODEL FOR 16" D x 24" W COLUMNS	MODEL FOR 24" D x 16" W COLUMNS	DESCRIPTION/DIVIDERS
2TCL16D11	2TCL24D11	2" Tub/1 Long, 1 Short
2TCL16D12	2TCL24D12	2" Tub/1 Long, 2 Short
2TCL16D22	2TCL24D22	2" Tub/2 Long, 2 Short
2TCL16D33	2TCL24D33	2" Tub/3 Long, 3 Short
4TCL16D11	4TCL24D11	4" Tub/1 Long, 1 Short
4TCL16D22	4TCL24D22	4" Tub/1 Long, 2 Short
4TCL16D22	4TCL24D22	4" Tub/2 Long, 2 Short
4TCL16D33	4TCL24D33	4" Tub/3 Long, 3 Short
8TCL16D11	8TCL24D11	8" Tub /1 Long, 1 Short
8TCL16D22	8TCL24D22	8" Tub/1 Long, 2 Short
8TCL16D22	8TCL24D22	8" Tub/2 Long, 2 Short
8TCL16D33	8TCL24D33	8" Tub/3 Long, 3 Short



*Max Weight Load – 2T Models is 20 lbs.; 4T Models is 40lbs; 8T Models 50 lbs.

LOGICELL® ACCESSORIES – BASKETS & DIVIDERS

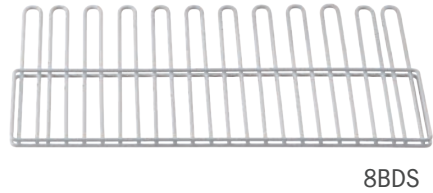
WIRE BASKETS & DIVIDERS

LogiQuip's white epoxy coated steel **Wire Baskets** for **LogiCell** have an exterior dimension of 23.6" D x 15.75" W. They are used to store supplies, where the open wire structure providing air circulation is desired. Each **Wire Basket** has two (2) built-in safety stops and can be used with standard and wide units. **Dividers** are sold individually or included in the kits to segment the **Basket** for optimization of organization.

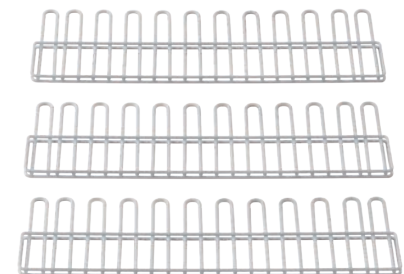
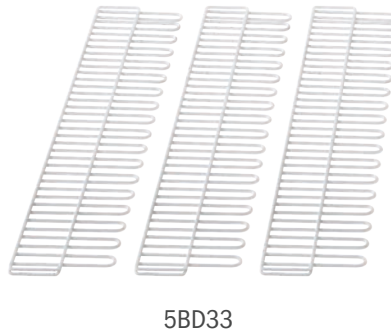
WIRE BASKETS*		
MODEL	DESCRIPTION	SLOTS USED
2B	For 16" D x 24" W Columns	1, 5 if slanted
5B	For 16" D x 24" W Columns	2, 6 if slanted
8B	For 24" D x 16" W Columns	3, 7 if slanted



DIVIDERS		
MODEL	DESCRIPTION	D x H - IN.
2BDL	For 2" Wire Basket, Long	22 x 1.625
2BDS	For 2" Wire Basket, Short	14 x 1.625
5BDL	For 5" Wire Basket, Long	22 x 4.625
5BDS	For 5" Wire Basket, Short	14 x 4.625
8BDL	For 8" Wire Basket, Long	22 x 7.5
8BDS	For 8" Wire Basket, Short	14 x 7.5



WIRE BASKET & DIVIDER KITS*	
MODEL	DIVIDERS
2BD11	1 Long, 1 Short
2BD12	1 Long, 2 Short
2BD22	2 Long, 2 Short
2BD33	3 Long, 3 Short
5BD11	1 Long, 1 Short
5BD12	1 Long, 2 Short
5BD22	2 Long, 2 Short
5BD33	3 Long, 3 Short
8BD11	1 Long, 1 Short
8BD12	1 Long, 2 Short
8BD22	2 Long, 2 Short
8BD33	3 Long, 3 Short



*Max Weight Load – 2B Models is 20 lbs.; 5B Models is 40lbs; 8B Models 50 lbs.

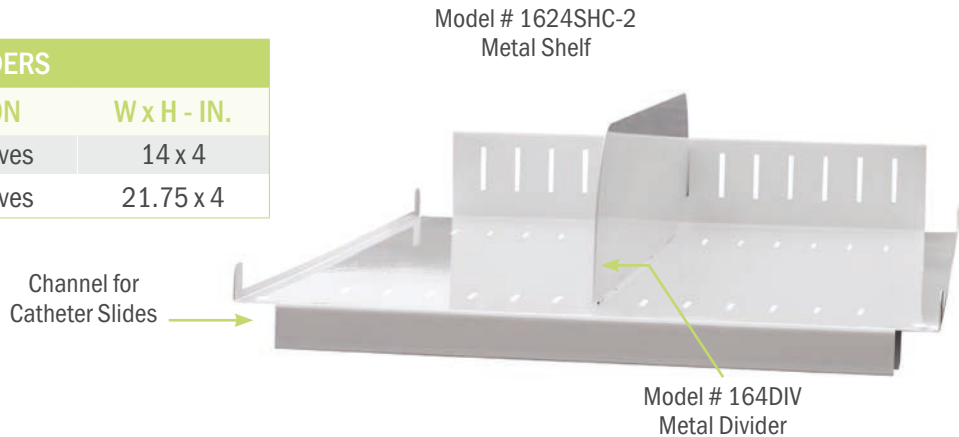
METAL SHELVES & DIVIDERS

These **Metal Shelves** are used to store larger or bulky items in the LogiCell® units. The shelf has a 2.5” H lip on the rear to prevent items from sliding back. The front slopes down 1” H to provide a labeling surface. The **Metal Shelf** can also be inserted in the reverse direction to retain items on the shelf in a slanted position. There are slots every 1” for attaching the **Metal Divider** to the **Shelf**, and an added channel across the rear and front that accepts **Catheter Slides**.

METAL SHELVES WITH CHANNEL					
MODEL	DESCRIPTION	CELL SLOTS	MAX DIVIDERS	CATHETER SLIDES	D x W x H - IN.
1624SHC-2	For 16” D x 24” W Column	2	21	Accepts up to 3	16 x 24 x 2.5
2416SHC-2	For 24” D x 16” W Column	2	13	Accepts up to 5	24 x 16 x 2.5
2436SHC-2	For 24” D x 36” W Column	2	31	Accepts up to 7	24 x 36 x 2.5
2416SHC-L	For 24” D x 16” W Column*	2	13	Accepts up to 5	24 x 16 x 2.5
2436SHC-L	For 24” D x 36” W Column*	2	13	Accepts up to 5	24 x 36 x 2.5

*With Locking Clips

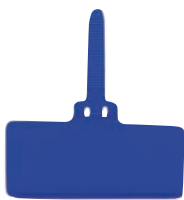
METAL DIVIDERS		
MODEL	DESCRIPTION	W x H - IN.
164DIV	For 16” D Shelves	14 x 4
244DIV	For 24” D Shelves	21.75 x 4



LABEL HOLDERS

The **LH3 3-Inch Label Holder** is attached by a strap which is wrapped around a horizontal wire of the **Wire Basket** and therefore can be placed in various locations across the front of the **Wire Basket**.

The **LH13 Label Holders** are mounted by sliding onto the full width of the top edge of the **Wire Basket** or **Clear Tub**. The clear labeling area is folded over itself to create a protected space for the **Label** to slide into.



Model # LH3-BLUE



Model #
LH132PS

LABEL HOLDERS		
MODEL	DESCRIPTION	W x H - IN.
LH3-COLOR	For Baskets Only: Blue, Red, Pink, Yellow, Orange, Green, Purple, Opaque, Black, Bright White, Stone, Teal, Dark Purple, Berry	1 x 3
LH132PS	For Baskets and Tubs	2 x 13.9
LH134PS-TD	For Baskets and Tubs	4 x 13.9

CATHETER SLIDES

These LogiCell Catheter Slides are used to store catheters contained in pouches. The rack pulls out of the Cabinet for easy access. The front plate of each Catheter Slide has a 3" x 5" Label Holder for improved organization. Catheter Slides can be attached to the ceiling of a LogiCell Cart or Cabinet, or below a Metal Shelf (page 24).



CATHETER SLIDES	
MODEL	DESCRIPTION
CAT16HD	For 16" Shelf/Cabinet, 6 hooks
CAT24HD	For 24" Shelf/Cabinet, 9 hooks

CATHETER CARD LABEL

Organize and document your Catheters with our Double Side Catheter Card Label. With room to document nine (9) Catheters, this Catheter Card Label is compatible with our LogiCell Catheter Slides.

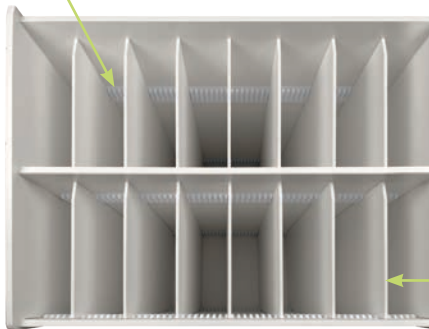


Model #
CATHCARD2

CATHETER BOXES, BINNING STRIPS & DIVIDERS

Conveniently organize and store catheter boxes in your LogiCell Cart with the Single and Double Column Slide-Out Catheter Box Holders. Each Catheter Box comes with Binning Strips and Dividers.

Binning Strips



Model # 2650CATHBOXDDIV

Dividers



Model #
2650CATHBOXD

CATHETER BOXES WITH BINNING STRIPS & DIVIDERS				
MODEL CATHETER BOX	DESCRIPTION	MODEL BINNING STRIPS & DIVIDERS	# OF DIVIDERS	D x W x H - IN.
2650CATHBOXS	Single Catheter Box	2650CATHBOXSDIV	8	23.5 x 15.25 x 30.5
2650CATHBOXD	Double Catheter Box	2650CATHBOXDDIV	16	23.5 x 32.25 x 30.5

SUTURE RACK

Easily store and secure up to 70 suture boxes with the **LogiCell Slide-Out Suture Rack**. This **LogiCell Accessory** comes with 10 removable/adjustable Shelves that slide out 100% for full visibility and accessibility.



Model # LCSOSR

SLIDE-OUT SUTURE RACK

MODEL	DESCRIPTION	D x W x H - IN.
LCSOSR	10 Shelves, 8 Cells	24 x 15 x 21

LOCKABLE DRAWERS

Lockable Drawers are on full-extension slides and are used to store supplies in **LogiCell Units**. A top to enclose the drawer and a surface that engages with the lock are included.



Model #
2416LDR

LOCKABLE DRAWERS

MODEL	DESCRIPTION	CELL SLOTS USED	INT. D x W - IN.
1624LDR	For 24" W Column	2	10.25 x 18.25 x 3.8
2416LDR	For 16" W Column	2	18 x 10.4 x 3.8
2436LDR	For 33" W Column	2	18 x 27.25 x 3.8
2436SSLDR-6LD	For 33" W Column	4	21.25 x 29.5 6.5

MEASURING LOGICELL® CARTS

MEASURING LOGICELL CARTS

If there is a **Full Bumper Package** on your **LogiCell Cart** measure from handle to handle horizontally and from the top of the **Cabinet** to the **Casters** vertically. The depth will be from the front of the **Bumper** to the back of the **Bumper**.

All other **LogiCell Carts** are measured from the top to the **Casters** for height, side to side for width, and front to back for depth (see examples below).



LogiCell Cart with Full Bumper Package

Basic LogiCell Cart

