



Enclosed CARTS



TABLE OF CONTENTS

TABLE OF CONTENTS

ENCLOSED CARTS	3
LOGICELL® CARTS	4-22
FEATURES & BENEFITS	4
CUSTOM LOGICELL CARTS	5-6
DOUBLE-WIDE	5
TRIPLE-WIDE	6
CATHETER CARTS WITH LOGICELL.	7-8
DOUBLE-WIDE	7
TRIPLE-WIDE	8
LOGICELL CARTS.	9-12
SINGLE-WIDE.	9
DOUBLE-WIDE	10-11
TRIPLE-WIDE	12
STAINLESS STEEL CARTS WITH LOGICELL	13
KITS & ACCESSORIES FOR LOGICELL	14-22
DOUBLE-WIDE ACCESSORY KITS	14-16
TRIPLE-WIDE ACCESSORY KITS	16-18
ACCESSORIES	19-22
PARSTOR® SERIES FEATURES & BENEFITS	23
ENCLOSED PARCARTS.	24
QT® CARTS	25
FEATURES & BENEFITS	25-35
STANDARD QT CARTS	26
NARROW QT CARTS.	27
SPECIALTY & CUSTOM QT CARTS	28-30
SECURITY & MAINTENANCE PLAN	31
ACCESSORIES	32-35

LOGIQUIP® ENCLOSED CARTS

SECURE STORAGE

LogiQuip offers several fully enclosed storage options that address safety and infection control concerns. Our LogiCell® Carts, ParCarts, and QT® Carts provide secure storage for nearly anywhere within your facility.



LogiCell Carts

ParCart

QT Carts

LIMITED 5-YEAR WARRANTY

LogiQuip products are covered by a **Limited 5-Year Warranty** from date of receipt against defect in materials or workmanship under normal use and service, excluding **Electronic Components, Cart Covers, Custom Products, LogiCell Tambour Doors, Label Holders, and Casters**. During this period, LogiQuip will, in its sole discretion, repair defects in materials or workmanship that existed when the product was received or replace the product. Visit [LogiQuip.com/Warranty](https://www.logiquip.com/Warranty) for more details.

LOGIQUIP® LOGICELL® CARTS

LogiCell Carts provide efficient enclosed storage to address safety and infection control concerns. The durable, versatile, and functional **LogiCell Carts** provide a unique **Cell Panel** along the inside walls of our **Carts** that significantly increases storage capacity. With a variety of sizes, security options, and **Accessories**, **LogiCell** is fully modular and can adapt to your needs as supplies, quantities, and processes change.

LOGICELL PANEL

LogiCell's unique **Cell Panel** design allows **Tubs**, **Wire Baskets**, and **Shelves** to be placed straight in or at an angle making the **LogiCell System** incredibly efficient. In addition, **Tubs**, **Wire Baskets**, and **Shelves** can be extended 80% for maximum visibility of supplies.

SECURITY OPTIONS

LogiCell Carts and **Cabinets** are available with a **Key Lock** or **eLock (Electronic Keyless Lock)** for controlled access supplies. **RFID** access is also available for hands-free access (custom orders).

DOOR OPTIONS

LogiCell Carts and **Cabinets** are available with **Tambour** or **Hinged Glass Doors**. **Tambour Doors** roll into a cassette helping to keep the door clean. Our **Glass Doors** are constructed with an aluminum frame and tempered glass insert, providing visibility to the supplies inside.



DOUBLE-WIDE CUSTOM LOGICELL® CARTS

CUSTOM LOGICELL CARTS

LogiCell Carts and Accessories allow for easy customization of your **LogiCell Cart** by function, including **Cardiac**, **Laparoscopy**, **Neurology**, and more. Use a mix of **Painted Steel Shelves**, **Wire Baskets**, **Clear Tubs**, and **Catheter Slides** to configure your **LogiCell Cart** to meet your unique needs.

- Customize your **LogiCell Cart(s)** using **Shells** from pages 10-11, **Accessory Kits** from pages 14-16, and **Accessories** from pages 19-22
- The **LogiCell Carts** shown on pages 5-6 are all available with **Hinged Glass Doors**
- **Double Carts** are 28" D x 41" W x 80" H
- **Triple Carts** are 28" D x 58" W x 80" H



Cardiac Cart



Laparoscopy Cart



Neurology Cart



Ophthalmology/ENT Cart

TRIPLE WIDE CUSTOM LOGICELL® CARTS



Arthroscopy Cart



Drape/Pack Cart



Laparoscopy Cart



Orthopedic 2 Cart

DOUBLE-WIDE CATHETER CARTS WITH LOGICELL®

PRE-CONFIGURED CATHETER CARTS WITH LOGICELL

- Catheter Carts come complete with **Accessories**
- **Dividers** are included with most **Tubs**, **Wire Baskets**, and **Shelves**
- Customize your **LogiCell Cart(s)** using **Shells** from pages 10-11, **Accessory Kits** from pages 14-16, and **Accessories** from pages 19-22
- **Double Carts** are 28" D x 41" W x 80" H
- **Triple Carts** are 28" D x 58" W x 80" H

DOUBLE-WIDE CATHETER CARTS WITH LOGICELL	
SINGLE COLUMN	DESCRIPTION
2651DTTGKLCAT1	Seven (7) 9-Hook Catheter Slides, Tambour Door
2651DTHGKLCAT1	Seven (7) 9-Hook Catheter Slides, Hinged Glass Doors
2651DTTGKLCAT2	Seven (7) 9-Hook Catheter Slides, Top Shelf w/5 Dividers, Tambour Door
2651DTHGKLCAT2	Seven (7) 9-Hook Catheter Slides, Top Shelf w/5 Dividers, Hinged Glass Doors
2651DTTGKLCAT3	Top Shelf with 5 Dividers, Catheter Box, 22 Cells, Tambour Door
2651DTHGKLCAT3	Top Shelf with 5 Dividers, Catheter Box, 22 Cells, Hinged Doors

DOUBLE COLUMN	DESCRIPTION
2652DTTGKLCAT7	Three (3) 9-hook Catheter slides, 5 Shelves w/Dividers, Tambour Door
2652DTHGKLCAT7	Three (3) 9-hook Catheter slides, 5 Shelves w/Dividers, Hinged Glass Doors
2652DTTGKLCAT5	Nine (9) 9-Hook Catheter Slides, Top Shelf w/2 Dividers, Tambour Door
2652DTHGKLCAT5	Nine (9) 9-Hook Catheter Slides, Top Shelf w/2 Dividers, Hinged Glass Doors
2652DTTGKLCAT8	6 Shelves, one (1) 3", four (4) 5" and two (2) 8" Wire Baskets, one (1) 3", one (1) 5" and one (1) 8" Clear Plastic Tubs, Tambour Door
2652DTHGKLCAT8	6 Shelves, one (1) 3", four (4) 5" and two (2) 8" Wire Baskets, one (1) 3", one (1) 5" and one (1) 8" Clear Plastic Tubs, Hinged Glass Doors
2652DTTGKLCAT6	Six (6) 9-Hook Catheter Slides, two (2) 24" Shelves - each w/2 Dividers, one (1) 3" and one (1) 5" Clear Tub w/2 Long and 2 Short Dividers, two (2) 3", two (2) 5" Wire Baskets each w/ 2 Long and 2 Short Dividers, one (1) 8" Wire Basket, Tambour Door
2652DTHGKLCAT6	Six (6) 9-Hook Catheter Slides, two (2) 24" Shelves - each w/2 Dividers, one (1) 3" and one (1) 5" Clear Tub w/2 Long and 2 Short Dividers, two (2) 3", two (2) 5" Wire Baskets each w/ 2 Long and 2 Short Dividers, one (1) 8" Wire Basket, Hinged Glass Doors



2651DTTGKLCAT1



2652DTHGKLCAT7

TRIPLE-WIDE CATHETER CARTS WITH LOGICELL®

TRIPLE-WIDE CATHETER CARTS WITH LOGICELL	
MODEL	DESCRIPTION
2653TTTGKLCAT1	Nine (9) 9-Hook Catheter Slides, Tambour Door
2653TTHGKLCAT1	Nine (9) 9-Hook Catheter Slides, Hinged Glass Doors on right side
2653TTTGKLCAT3	Three (3) 9-Hook Catheter Slides, 3 Metal Shelves w/2 Dividers, four (4) 3" and two (2) 5" Clear Tub w/2 Long and 2 Short Dividers, four (4) 3", two and 5" Wire Baskets each w/ 2 Long and 2 Short Dividers, one (1) 8" Wire Basket, 1 Locking Drawer, Tambour Door
2653TTHGKLCAT3	Three (3) 9-Hook Catheter Slides, 3 Metal Shelves w/2 Dividers, four (4) 3" and two (2) 5" Clear Tub w/2 Long and 2 Short Dividers, four (4) 3", two and 5" Wire Baskets each w/ 2 Long and 2 Short Dividers, one (1) 8" Wire Basket, 1 Locking Drawer, Hinged Glass Doors
2652TTLCTGKLCAT4	Single Column left, Double Column right, 1 Shelf w/Dividers, two (2) 3", two (2) 5" and one (1) 8" Wire Baskets w/Dividers, one (1) 3" and one (1) 5" Clear Tub w/Dividers, Seven (7) 9-Hook Catheter Slides, Tambour Door
2652TTLCHGKLCAT4	Single Column left, Double Column right, 1 Shelf w/Dividers, two (2) 3", two (2) 5" and one (1) 8" Wire Baskets w/Dividers, one (1) 3" and one (1) 5" Clear Tub w/Dividers, Seven (7) 9-Hook Catheter Slides, Hinged Glass Doors on right side
2652TTLCTGKLCAT2	Single Column left, Double Column right, 5 Shelves w/Dividers, two (2) 3", one (1) 5" and one (1) 8" Wire Baskets w/Dividers, two (2) 3" and one (1) 5" Clear Tub w/Dividers, Fourteen (14) 9-Hook Catheter Slides, Tambour Door
2652TTLCHGKLCAT2	Single Column left, Double Column right, 5 Shelves w/Dividers, two (2) 3", one (1) 5" and one (1) 8" Wire Baskets w/Dividers, two (2) 3" and one (1) 5" Clear Tub w/Dividers, Fourteen (14) 9-Hook Catheter Slides, Hinged Glass Doors on right side



Model #
2653TTTGKLCAT1

CATHETER SLIDES

These **LogiCell Catheter Slides** are used to store catheters contained in pouches. The rack pulls out of the **Cabinet** for easy access. The front plate of each **Catheter Slide** has a 3" x 5" **Label Holder** for improved organization. **Catheter Slides** can be attached to the ceiling of a **LogiCell Cart/Cabinet**, or below a **Metal Shelf** (see page 21).



CATHETER SLIDES	
MODEL	DESCRIPTION
CAT16HD	For 16" Shelf/Cabinet, 6 hooks
CAT24HD	For 24" Shelf/Cabinet, 9 hooks

SINGLE-WIDE LOGICELL® CARTS

SINGLE-WIDE, ONE COLUMN

These **Single-Wide, One Column Carts** are available in $\frac{3}{4}$ and **Tall Heights**, are ideal for applications demanding high storage volume with limited floor space, and are sized to fit one narrow column of cell system **Accessories**. The ceiling is pre-set to hold **Catheter Slides** and is available with either **Key Lock** or **eLock**

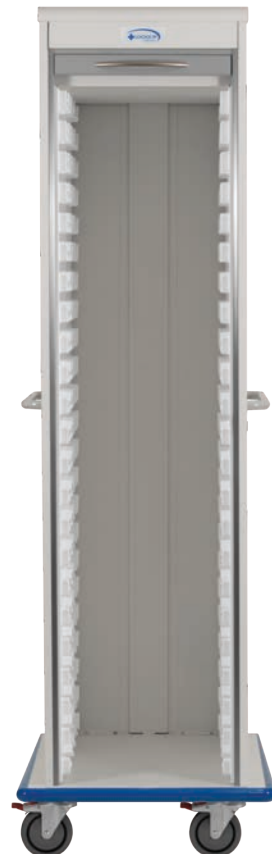
- $\frac{3}{4}$ Height Carts 28" D x 24.5" W x 62" H
- Tall Height Carts are 28" D x 24.5" W x 80" H

SINGLE-WIDE ONE COLUMN $\frac{3}{4}$ HEIGHT	
MODEL	DESCRIPTION
2651SQTGKL	Tambour Door, Key Lock
2651SQTGEL	Tambour Door, eLock
2651SQHGKL	Glass Door, Key Lock
2651SQHGEL	Glass Door, eLock

SINGLE-WIDE ONE COLUMN TALL HEIGHT	
MODEL	DESCRIPTION
2651STTGKL	Tambour Door, Key Lock
2651STTGEL	Tambour Door, eLock
2651STRGKL	Glass Door, Hinged Right, Key Lock
2651STLGKL	Glass Door, Hinged Left, Key Lock
2651STRGEL	Glass Door, Hinged Right, eLock
2651STLGEL	Glass Door, Hinged Left, eLock



Model #
2651SQTGKL



Model #
2651STLGKL

OPTIONS & ACCESSORIES

- There are 16 usable slots for **Accessories** for the $\frac{3}{4}$ Tall Cart
- There are 22 usable slots for **Accessories** for the Tall Cart
- Carts accept **Accessories** for 24" D x 16" W columns

DOUBLE-WIDE LOGICELL® CARTS

DOUBLE-WIDE, ONE COLUMN

These **Double-Wide, One Column Carts** are available in $\frac{1}{2}$, $\frac{3}{4}$, and **Tall Heights**, and are sized to fit one column of wide cell system **Accessories**. The ceiling is pre-set to hold **Catheter Slides** and is available with **Key Lock** or **eLock**.

- $\frac{1}{2}$ Height Carts are 28" D x 41" W x 42" H
- $\frac{3}{4}$ Height Carts are 28" D x 41" W x 62" H
- Tall Height Carts are 28" D x 41" W x 80" H

DOUBLE-WIDE ONE COLUMN $\frac{1}{2}$ HEIGHT	
MODEL	DESCRIPTION
2651DHTGKL	Tambour Door, 9 Slots/Column, Key Lock
2651DHTGEL	Tambour Door, 9 Slots/Column, eLock
2651DHHGKL	Hinged Glass Doors 9, Slots/Column, Key Lock
2651DHHGEL	Hinged Glass Doors 9, Slots/Column, eLock

DOUBLE-WIDE ONE COLUMN $\frac{3}{4}$ HEIGHT	
MODEL	DESCRIPTION
2651DQTGKL	Tambour Door, 16 Slots, Key Lock
2651DQTGEL	Tambour Door, 16 Slots, eLock
2651DQHGKL	Hinged Glass Doors, 16 Slots, Key Lock
2651DQHGEL	Hinged Glass Doors, 16 Slots, eLock

DOUBLE-WIDE ONE COLUMN TALL HEIGHT	
MODEL	DESCRIPTION
2651DTTGKL	Tambour Door, 22 Slots, Key Lock
2651DTTGEL	Tambour Door, 22 Slots, eLock
2651DTHGKL	Hinged Glass Doors, 22 Slots, Key Lock
2651DTHGEL	Hinged Glass Doors, 22 Slots, eLock



Model #
2651DTTGEL

OPTIONS & ACCESSORIES

- Accepts **Accessories** for 24" D x 36" W columns
- **Double Sloped Top** is available: **2650ST6D**



eLock on
Tambour Door



eLock on
Glass Door

DOUBLE-WIDE LOGICELL® CARTS

DOUBLE-WIDE, TWO COLUMNS

These **Double-Wide, Two Column Carts** are available in $\frac{1}{2}$, $\frac{3}{4}$, and **Tall Heights**, and are sized to fit two columns of wide cell system **Accessories**. Each column is 15.75" between the cell panels. The ceiling is pre-set to hold **Catheter Slides** and is available with either **Key Lock** or **eLock**.

- **$\frac{1}{2}$ Height Carts** are 28" D x 40" W x 42" H
- **$\frac{3}{4}$ Height Carts** are 28" D x 40" W x 62" H
- **Tall Height Carts** are 28" D x 40" W x 80" H

DOUBLE-WIDE TWO COLUMNS $\frac{1}{2}$ HEIGHT	
MODEL	DESCRIPTION
2652DHTGKL	Tambour Door, 9 Slots/Column, Key Lock
2652DHTGEL	Tambour Door, 9 Slots/Column, eLock
2652DHHGKL	Hinged Glass Doors, 9 Slots/Column, Key Lock
2652DHHGEL	Hinged Glass Doors, 9 Slots/Column, eLock

DOUBLE-WIDE TWO COLUMNS $\frac{3}{4}$ HEIGHT	
MODEL	DESCRIPTION
2652DQTGKL	Tambour Door, 16 Slots/Column, Key Lock
2652DQTGEL	Tambour Door, 16 Slots/Column, eLock
2652DQHGKL	Hinged Glass Doors, 16 Slots/Column, Key Lock
2652DQHGEL	Hinged Glass Doors, 16 Slots/Column, eLock

DOUBLE-WIDE TWO COLUMNS TALL HEIGHT	
MODEL	DESCRIPTION
2652DTTGKL	Tambour Door, 22 Slots/Column, Key Lock
2652DTTGEL	Tambour Door, 22 Slots/Column, eLock
2652DTHGKL	Hinged Glass Doors, 22 Slots/Column, Key Lock
2652DTHGEL	Hinged Glass Doors, 22 Slots/Column, eLock



Model # 2652DHHGKL
With Plastic Top Model # 2650DHT



Model # 2652DTTGEL
Tall Height

OPTIONS & ACCESSORIES

- Accepts **Accessories** for 24"D x 16" W columns
- **Double Sloped Top** is available: 2650ST6D
- **Plastic Top for Double Width $\frac{1}{2}$ Height Cart:** 2650DHT

TRIPLE-WIDE LOGICELL® CARTS

TRIPLE-WIDE, TWO COLUMNS

These Triple-Wide Two Column Carts are sized to fit standard cell system. Accessories are available for both Single and Double-Wide Columns. The ceiling is pre-set to hold Catheter Slides and is available with either Key Lock or eLock.

- Carts are 28" D x 58" W x 80" H

OPTIONS & ACCESSORIES

- There are 22 usable slots for Accessories
- Accepts Accessories for 24" D x 16" W and 24" D x 36" W columns
- Triple Slope Top is available: 2650ST6T

TRIPLE-WIDE TWO COLUMNS	
MODEL	DESCRIPTION
2652TTLCTGKL	Tambour Door, 22 Slots/Column, Small Column on Left Side, Key Lock
2652TTLCTGEL	Tambour Door, 22 Slots/Column, Small Column on Left Side, eLock
2652TTRCTGKL	Tambour Door, 22 Slots/Column, Small Column on Right Side, Key Lock
2652TTRCTGEL	Tambour Door, 22 Slots/Column, Small Column on Right Side, eLock
2652TTLCHGKL	Hinged Glass Doors, 22 Slots/Column, Small Column on Left Side, Key Lock
2652TTLCHGEL	Hinged Glass Doors, 22 Slots/Column, Small Column on Left Side, eLock
2652TTRCHGKL	Hinged Glass Doors, 22 Slots/Column, Small Column on Right Side, Key Lock
2652TTRCHGEL	Hinged Glass Doors, 22 Slots/Column, Small Column on Right Side, eLock

TRIPLE-WIDE TWO COLUMNS SPLIT	
MODEL	DESCRIPTION
2652TTRCBSHGKL	Hinged Glass Doors, 22 Slots/Column, Wide Column Split on Left Side, Key Lock
2652TTRCBSHGEL	Hinged Glass Doors, 22 Slots/Column, Wide Column Split on Left, eLock
2652TTLCBSHGKL	Hinged Glass Doors, 22 Slots/Column, Wide Column Split on Right Side, Key Lock
2652TTLCBSHGEL	Hinged Glass Doors, 22 Slots/Column, Wide Column Split on Right Side, eLock

TRIPLE-WIDE THREE COLUMNS	
MODEL	DESCRIPTION
2653TTTGKL	Tambour Door, 22 Slots/Column, 3 Columns, Key Lock
2653TTTGEL	Tambour Door, 22 Slots/Column, 3 Columns, eLock
2653TTHGKL	Hinged Glass Doors, 22 Slots/Column, 3 Columns, Key Lock
2653TTHGEL	Hinged Glass Doors, 22 Slots/Column, 3 Columns, eLock



Model # 2653TTTGKL



Model # 2652TTRCTGKL
Shown with Optional Shelves

STAINLESS STEEL LOGICELL® CARTS

STAINLESS STEEL SINGLE-WIDE, ONE COLUMN

These **Stainless Steel Single-Wide, One Column Carts** are sized to fit standard cell system **Accessories**, have 23 usable slots, and come standard with a **Glass Hinged Door**.

- **Carts** are 28" D x 27" W x 78" H

SINGLE-WIDE	
MODEL	DESCRIPTION
22381SSLG	Left Hinge Glass Door, 23 Slots
22381SSRG	Right Hinge Glass Door, 23 Slots



Model #
22381SSLG

STAINLESS STEEL DOUBLE-WIDE, TWO COLUMN

These **Stainless Steel Double-Wide, Two Column Carts** are sized to fit standard cell system **Accessories**, come standard with double **Glass Hinged Doors**, and have 23 wide slots per column.

- **Carts** are 28" D x 41" W x 78" H

DOUBLE-WIDE	
MODEL	DESCRIPTION
24581SSHG*	Double Glass Hinged Doors, 16 Slots/Column, 1 Column
24582SSHG	Double Glass Hinged Doors, 16 Slots/Column, 2 Columns

*Can use Shelves and Catheter Slides ONLY with this Cart, not Baskets or Bins.



Model #
24582SSHG

STAINLESS STEEL TRIPLE-WIDE CARTS

These **Stainless Steel Triple-Wide Carts** are sized to fit standard cell system **Accessories**, have 23 usable slots per column, and come standard with triple **Glass Hinged Doors**.

- **Carts** are 28" D x 54" W x 82" H

STAINLESS STEEL TRIPLE-WIDE	
MODEL	DESCRIPTION
24882RCSSHG	Triple Glass Hinged Doors, Wide Column on the left, Standard Column on the right, 23 Slots/Column
24882LCSSHG	Triple Glass Hinged Doors, Wide Column on the right, Standard Column on the left, 23 Slots/Column
24883SSHG	Triple Glass Hinged Doors, Three (3) Standard Columns, 23 Slots/Column (69 Slots total)



Model #
24882RCSSHG

LOGICELL® DOUBLE-WIDE CART ACCESSORY KITS

ACCESSORY KITS FOR LOGICELL DOUBLE-WIDE, TWO COLUMN CARTS

LogiCell Accessory Kits for **Double-Wide, Two Column Carts** (21" D x 48" W x 80" H) offer multiple turnkey options thoughtfully designed by function including **Arthroscopy**, **Cardio**, **Cysto**, **Ortho**, and **Vascular**. For additional options to fit your needs, you can customize your cart with **Wire Baskets**, **Clear Tubs**, **Metal Shelves**, and **Catheter Slides** to create the ideal solution. Carts are sold separately.

ARTHROSCOPY DOUBLE-WIDE CART ACCESSORY KIT

ARTHROSCOPY DOUBLE-WIDE CART ACCESSORY KIT INCLUDES			
MODEL	DESCRIPTION	QTY	D x W x H - IN.
2416SHC-2	Steel Shelf w/Divider Slots, Frosty White	6	24 x 16 x 2.5
244DIV	Steel Divider, Frosty White	12	24 W x 4 H
5B	Wire Basket, 2 Cell, White	6	23.6 x 15.75 x 5
5BDL	Long Wire Divider For 5B, White	6	—
5BDS	Short Wire Divider For 5B, White	6	—
4TCL	Clear Tub, 2 Cell	1	23.6 x 15.7 x 4
4TDLCL	Long Clear Plastic Divider For 4TCL	2	—
4TDSCL	Short Clear Plastic Divider For 4TCL	2	—
8B	Wire Basket, 3 Cell, White	1	23.6 x 15.75 x 8
8BDL	Long Wire Divider For 8B, White	1	—
8BDS	Short Wire Divider For B, White	1	—
LC-STOP	Safety Stop for Clear Trays/Tubs (set of 2)	1	—



2652DTART
Arthroscopy Cart

CARDIO DOUBLE-WIDE CART ACCESSORY KIT

CARDIO DOUBLE-WIDE CART ACCESSORY KIT INCLUDES			
MODEL	DESCRIPTION	QTY	D x W x H - IN.
2416SHC-2	Steel Shelf w/13 Divider Slots, Frosty White	5	24 x 16 x 2.5
244DIV	Steel Divider, Frosty White	4	24 W x 4 H
2TCL	Clear Tub, 1 Cell	2	23.6 x 15.7 x 2
2TDLCL	Long Clear Plastic Divider For 2TCL	4	—
2TDSCL	Short Clear Plastic Divider For 2TCL	4	—
5B	Wire Basket, 2 Cell, White	2	23.6 x 15.75 x 5
5BDL	Long Wire Divider For 5B, White	2	—
5BDS	Short Wire Divider For 5B, White	2	—
4TCL	Clear Tub, 2 Cell	1	23.6 x 15.7 x 4
4TDLCL	Long Clear Plastic Divider For 4TCL	2	—
4TDSCL	Short Clear Plastic Divider For 4TCL	2	—
8B	Wire Basket, 3 Cell, White	2	23.6 x 15.75 x 8
8BDL	Long Wire Divider For 8B, White	2	—
8BDS	Short Wire Divider For B, White	2	—
LC-STOP	Safety Stop for Clear Trays/Tubs (set of 2)	3	—



2652DCARD
Cardio Cart

*For Hinged Glass Doors (add HG to the end of the model number)

LOGICELL® DOUBLE-WIDE CART ACCESSORY KITS

CYSTO DOUBLE-WIDE CART ACCESSORY KIT

CYSTO DOUBLE-WIDE CART ACCESSORY KIT INCLUDES				
MODEL	DESCRIPTION	QTY	D x W x H - IN.	
2416SHC-2	Steel Shelf w/Divider Slots, Frosty White	5	24 x 16 x 2.5	
244DIV	Steel Divider, Frosty White	12	24 W x 4 H	
5B	Wire Basket, 2 Cell, White	3	23.6 x 15.75 x 5	
5BDL	Long Wire Divider For 5B, White	6	—	
5BDS	Short Wire Divider For 5B, White	6	—	
4TCL	Clear Tub, 2 Cell	1	23.6 x 15.7 x 4	
8B	Wire Basket, 3 Cell, White	1	23.6 x 15.75 x 8	
CAT24HD	Heavy-Duty, Catheter Slide Shelf, White Epoxy-Coated, 9 Hooks	3	24 D	
LC-STOP	Safety Stop for Clear Trays/Tubs (set of 2)	1	—	



2652DCYST
Cysto Cart

ORTHO DOUBLE-WIDE CART ACCESSORY KIT

ORTHO DOUBLE-WIDE CART ACCESSORY KIT INCLUDES				
MODEL	DESCRIPTION	QTY	D x W x H - IN.	
2416SHC-2	Steel Shelf w/13 Divider Slots, Frosty White	4	24 x 16 x 2.5	
2B	Wire Basket, 1 Cell, White	1	23.6 x 15.75 x 2.25	
2BDL	Long Wire Divider For 2B, White	1	—	
2BDS	Short Wire Divider For 2B, White	2	—	
2TCL	Clear Tub, 1 Cell	1	23.6 x 15.7 x 2	
2TDLCL	Long Clear Plastic Divider For 2TCL	1	—	
2TDSCl	Short Clear Plastic Divider For 2TCL	2	—	
5B	Wire Basket, 2 Cell, White	10	23.6 x 15.75 x 5	
5BDL	Long Wire Divider For 5B, White	10	—	
5BDS	Short Wire Divider For 5B, White	10	—	
4TCL	Clear Tub, 2 Cell	3	23.6 x 15.7 x 4	
4TDLCL	Long Clear Plastic Divider For 4TCL	3	—	
4TDSCl	Short Clear Plastic Divider For 4TCL	3	—	
LC-STOP	Safety Stop for Clear Trays/Tubs (set of 2)	4	—	



2652DORTH
Ortho Cart

LOGICELL® DOUBLE-WIDE CART ACCESSORY KITS

VASCULAR DOUBLE-WIDE CART ACCESSORY KIT

VASCULAR DOUBLE-WIDE CART ACCESSORY KIT INCLUDES			
MODEL	DESCRIPTION	QTY	D x W x H - IN.
2416SHC-2	Steel Shelf w/Divider Slots, Frosty White	3	24 x 16 x 2.5
244DIV	Steel Divider, Frosty White	6	24 W x 4 H
5B	Wire Basket, 2 Cell, White	2	23.6 x 15.75 x 5
5BDL	Long Wire Divider For 5B, White	2	—
5BDS	Short Wire Divider For 5B, White	2	—
4TCL	Clear Tub, 2 Cell	1	23.6 x 15.7 x 4
4TDLCL	Long Clear Plastic Divider For 4TCL	1	—
4TDSCL	Short Clear Plastic Divider For 4TCL	1	—
8B	Wire Basket, 3 Cell, White	3	23.6 x 15.75 x 8
CAT24HD	Heavy-Duty, Catheter Slide Shelf, White Epoxy-Coated, 9 Hooks	3	24 D
LC-STOP	Safety Stop for Clear Trays/Tubs (set of 2)	1	—



2652DVASC
Vascular Cart

LOGICELL® TRIPLE-WIDE CART ACCESSORY KITS

PRE-CONFIGURED TRIPLE-WIDE SUPPLY CARTS WITH LOGICELL

LogiCell Accessory Kits for Triple-Wide Carts (28" D x 58" W x 80" H) are available in several configurations including **Arthroscopy**, **Cardio**, **Cysto**, **Ortho**, and **Vascular**. Thoughtfully designed by function, these **Accessory Kits** make it easy to set up your **LogiCell Cart**. For additional options to fit your needs, you can customize your cart with **Wire Baskets**, **Clear Tubs**, **Metal Shelves**, and **Catheter Slides** to create the ideal solution. Carts are sold separately.

ARTHROSCOPY TRIPLE-WIDE CART ACCESSORY KIT

ARTHROSCOPY TRIPLE-WIDE CART ACCESSORY KIT INCLUDES			
MODEL	DESCRIPTION	QTY	D x W x H - IN.
2416SHC-2	Steel Shelf w/Divider Slots, Frosty White	8	24 x 16 x 2.5
244DIV	Steel Divider, Frosty White	16	24 W x 4 H
5B	Wire Basket, 2 Cell, White	8	23.6 x 15.75 x 5
4TCL	Clear Tub, 2 Cell	2	23.6 x 15.7 x 4
4TDLCL	Long Clear Plastic Divider For 4TCL	4	—
4TDSCL	Short Clear Plastic Divider For 4TCL	4	—
8B	Wire Basket, 3 Cell, White	3	23.6 x 15.75 x 8
LC-STOP	Safety Stop for Clear Trays/Tubs (set of 2)	2	—



2653TART
Arthroscopy Cart

*For Hinged Glass Doors (add HG to the end of the model number)

LOGICELL® TRIPLE-WIDE CART ACCESSORY KITS

CARDIO TRIPLE-WIDE CART ACCESSORY KIT

CARDIO TRIPLE-WIDE CART ACCESSORY KIT INCLUDES			
MODEL	DESCRIPTION	QTY	D x W x H - IN.
2416SHC-2	Steel Shelf w/13 Divider Slots, Frosty White	6	24 x 16 x 2.5
244DIV	Steel Divider, Frosty White	8	24 W x 4 H
2TCL	Clear Tub, 1 Cell	2	23.6 x 15.7 x 2
2TDLCL	Long Clear Plastic Divider For 2TCL	6	—
2TDSCL	Short Clear Plastic Divider For 2TCL	6	—
5B	Wire Basket, 2 Cell, White	5	23.6 x 15.75 x 5
5BDL	Long Wire Divider For 5B, White	5	—
5BDS	Short Wire Divider For 5B, White	5	—
4TCL	Clear Tub, 2 Cell	3	23.6 x 15.7 x 4
4TDLCL	Long Clear Plastic Divider For 4TCL	3	—
4TDSCL	Short Clear Plastic Divider For 4TCL	3	—
8B	Wire Basket, 3 Cell, White	2	23.6 x 15.75 x 8
8BDL	Long Wire Divider For 8B, White	2	—
8BDS	Short Wire Divider For 8B, White	2	—
8TCL	Clear Tub, 2 Cell	2	23.6 x 15.7 x 8
8TDLCL	Long Wire Divider For 8TCL, White	4	—
8TDSCL	Short Wire Divider 8TCL, White	4	—
LC-STOP	Safety Stop for Clear Trays/Tubs (set of 2)	7	—



2653TCARD
Cardio Cart

CYSTO TRIPLE-WIDE CART ACCESSORY KIT

CYSTO TRIPLE-WIDE CART ACCESSORY KIT INCLUDES			
MODEL	DESCRIPTION	QTY	D x W x H - IN.
2416SHC-2	Steel Shelf w/Divider Slots, Frosty White	7	24 x 16 x 2.5
244DIV	Steel Divider, Frosty White	14	24 W x 4 H
2B	Wire Basket, 1 Cell, White	6	23.6 x 15.75 x 2.25
2BDL	Long Wire Divider For 2B, White	6	—
2BDS	Short Wire Divider For 2B, White	6	—
2TCL	Clear Tub, 1 Cell	5	23.6 x 15.75 x 5
2TDLCL	Long Clear Plastic Divider For 2TCL	5	—
2TDSCL	Short Clear Plastic Divider For 2TCL	5	—
5B	Wire Basket, 2 Cell, White	3	23.6 x 15.75 x 5
5BDL	Long Wire Divider For 5B, White	3	—
5BDS	Short Wire Divider For 5B, White	3	—
CAT24HD	Heavy-Duty, Catheter Slide Shelf, White Epoxy-Coated, 9 Hooks	3	24 D
LC-STOP	Safety Stop for Clear Trays/Tubs (set of 2)	5	—



2653TCYST
Cysto Cart

LOGICELL® TRIPLE-WIDE CART ACCESSORY KITS

ORTHO TRIPLE-WIDE CART ACCESSORY KIT

OTHRO TRIPLE-WIDE CART ACCESSORY KIT INCLUDES				
MODEL	DESCRIPTION	QTY	D x W x H - IN.	
2416SHC-2	Steel Shelf w/Divider Slots, Frosty White	6	24 x 16 x 2.5	
244DIV	Steel Divider, Frosty White	9	24 W x 4 H	
2B	Wire Basket, 1 Cell, White	1	23.6 x 15.75 x 2.25	
2BDL	Long Wire Divider For 2B, White	1	—	
2BDS	Short Wire Divider For 2B, White	1	—	
2TCL	Clear Tub, 1 Cell	1	23.6 x 15.75 x 5	
2TDLCL	Long Clear Plastic Divider For 2TCL	1	—	
2TDSCL	Short Clear Plastic Divider For 2TCL	1	—	
5B	Wire Basket, 2 Cell, White	7	23.6 x 15.75 x 5	
5BDL	Long Wire Divider For 5B, White	7	—	
5BDS	Short Wire Divider For 5B, White	7	—	
4TCL	Clear Tub, 2 Cell	4	23.6 x 15.7 x 4	
4TDLCL	Long Clear Plastic Divider For 4TCL	4	—	
4TDSCL	Short Clear Plastic Divider For 4TCL	4	—	
LC-STOP	Safety Stop for Clear Trays/Tubs (set of 2)	5	—	



2653TORTH
Ortho Cart

VASCULAR TRIPLE-WIDE CART ACCESSORY KIT

VASCULAR TRIPLE-WIDE CART ACCESSORY KIT INCLUDES				
MODEL	DESCRIPTION	QTY	D x W x H - IN.	
2416SHC-2	Steel Shelf w/Divider Slots, Frosty White	12	24 x 16 x 2.5	
244DIV	Steel Divider, Frosty White	14	24 W x 4 H	
2B	Wire Basket, 1 Cell, White	4	23.6 x 15.75 x 2.25	
2BDL	Long Wire Divider For 2B, White	8	—	
2BDS	Short Wire Divider For 2B, White	8	—	
2TCL	Clear Tub, 1 Cell	3	23.6 x 15.75 x 5	
2TDLCL	Long Clear Plastic Divider For 2TCL	6	—	
2TDSCL	Short Clear Plastic Divider For 2TCL	6	—	
5B	Wire Basket, 2 Cell, White	4	23.6 x 15.75 x 5	
5BDL	Long Wire Divider For 5B, White	4	—	
5BDS	Short Wire Divider For 5B, White	4	—	
4TCL	Clear Tub, 2 Cell	3	23.6 x 15.7 x 4	
4TDLCL	Long Clear Plastic Divider For 4TCL	3	—	
4TDSCL	Short Clear Plastic Divider For 4TCL	3	—	
LC-STOP	Safety Stop for Clear Trays/Tubs (set of 2)	6	—	



2653TVASC
Vascular Cart

LOGICELL® ACCESSORIES – TUBS & DIVIDERS

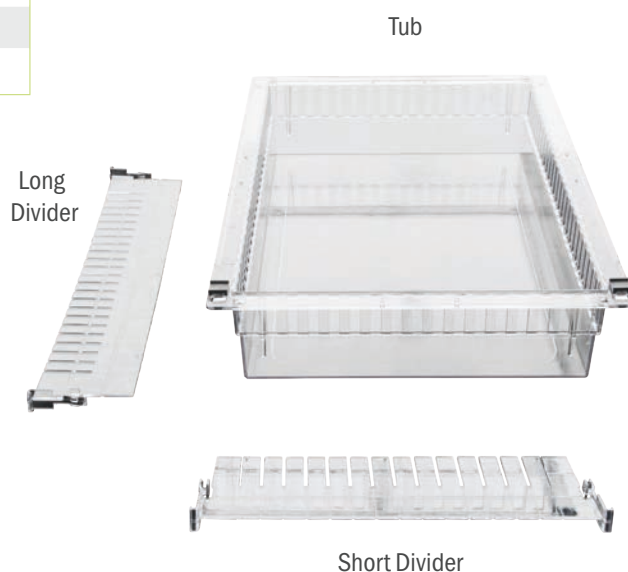
CLEAR TUBS & DIVIDERS

These Polycarbonate (PC) **Clear Tubs** for **LogiCell** have an exterior dimension of 24" D x 15" W, and are used to store supplies, typically smaller or those with a concern of spills. Each **Tub** includes two (2) safety stops and can be used with standard and wide units. The **Clear Dividers** can be installed to segment the **Tub** for optimization of organization.

TUBS*		
MODEL	DESCRIPTION	SLOTS USED
2TCL16	For 16" D x 24" W Columns, With Stops	1, 4 if slanted
2TCL24	For 24" D x 16" W Columns, With Stops	1, 4 if slanted
4TCL16	For 24" D x 16" W Columns, With Stops	2, 5 if slanted
4TCL24	For 16" D x 24" W Columns, With Stops	2, 5 if slanted
8TCL16	For 24" D x 16" W Columns, With Stops	3, 6 if slanted
8TCL24	For 16" D x 24" W Columns, With Stops	3, 6 if slanted

DIVIDERS			
MODEL	DESCRIPTION	SPEC. OF TUBS	D x H - IN.
2TDLCL	For 2" Tub, Long	Max of 8	22 x 2
2TDSCL	For 2" Tub, Short	Max of 12	14 x 2
4TDLCL	For 4" Tub, Long	Max of 17	22 x 4
4TDSCL	For 4" Tub, Short	Max of 27	14 x 4
8TDLCL	For 8" Tub, Long	Max of 17	22 x 8
8TDSCL	For 8" Tub, Short	Max of 27	14 x 8

TUB & DIVIDER KITS*	
MODEL	DESCRIPTION/DIVIDERS
2TCL16D22	Tub for 16" D x 24" W Columns/2 Long, 2 Short
2TCL24D11	Tub for 24" D x 16" W Columns/1 Long, 1 Short
2TCL24D12	Tub for 24" D x 16" W Columns/1 Long, 2 Short
2TCL24D22	Tub for 24" D x 16" W Columns/2 Long, 2 Short
2TCL24D33	Tub for 24" D x 16" W Columns/3 Long, 3 Short
4TCL16D22	Tub for 16" D x 24" W Columns/2 Long, 2 Short
4TCL16D33	Tub for 16" D x 24" W Columns/3 Long, 3 Short
4TCL24D11	Tub for 24" D x 16" W Columns/1 Long, 1 Short
4TCL24D12	Tub for 24" D x 16" W Columns/1 Long, 2 Short
4TCL24D22	Tub for 24" D x 16" W Columns, 2 Long, 2 Short
4TCL24D33	Tub for 24" D x 16" W Columns, 3 Long, 3 Short
8TCL24D11	Tub for 24" D x 16" W Columns/1 Long, 2 Short
8TCL24D12	Tub for 24" D x 16" W Columns/1 Long, 2 Short
8TCL24D22	Tub for 24" D x 16" W Columns/2 Long, 2 Short
8TCL24D33	Tub for 24" D x 16" W Columns/3 Long, 3 Short



TUB & DIVIDER KITS
Includes: Tub, Long Divider(s)
and Short Divider(s)

Model # 4TCL24D11
shown above

*Max Weight Load – 2T Models is 20 lbs.; 4T Models is 40lbs; 8T Models 50 lbs.

LOGICELL® ACCESSORIES – BASKETS & DIVIDERS

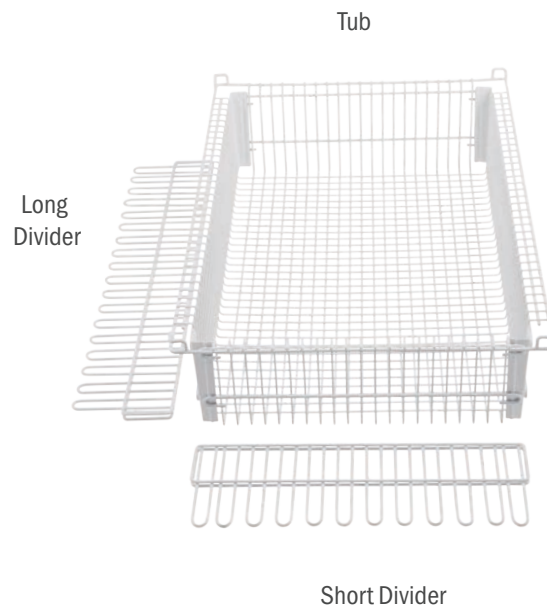
WIRE BASKETS & DIVIDERS

LogiQuip's white epoxy coated steel **Wire Baskets** for **LogiCell** have an exterior dimension of 23.6" D x 15.75" W. They are used to store supplies, where the open wire structure providing air circulation is desired. Each **Wire Basket** includes two (2) built-in safety stops and can be used with standard and wide units. **Dividers** are sold individually or included in the kits to segment the **Basket** for optimization of organization.

WIRE BASKETS*		
MODEL	DESCRIPTION	SLOTS USED
2B	For 16" D x 24" W Columns	1, 5 if slanted
5B	For 16" D x 24" W Columns	2, 6 if slanted
8B	For 24" D x 16" W Columns	3, 7 if slanted

DIVIDERS		
MODEL	DESCRIPTION	D x H - IN.
2BDL	For 2" Wire Basket, Long	22 x 1.625
2BDS	For 2" Wire Basket, Short	14 x 1.625
5BDL	For 5" Wire Basket, Long	22 x 4.625
5BDS	For 5" Wire Basket, Short	14 x 4.625
8BDL	For 8" Wire Basket, Long	22 x 7.5
8BDS	For 8" Wire Basket, Short	14 x 7.5

WIRE BASKET & DIVIDER KITS*	
MODEL	DIVIDERS
2BD11	1 Long, 1 Short
2BD22	2 Long, 2 Short
2BD33	3 Long, 3 Short
5BD11	1 Long, 1 Short
5BD22	2 Long, 2 Short
5BD33	3 Long, 3 Short
8BD11	1 Long, 1 Short
8BD22	2 Long, 2 Short
8BD33	3 Long, 3 Short



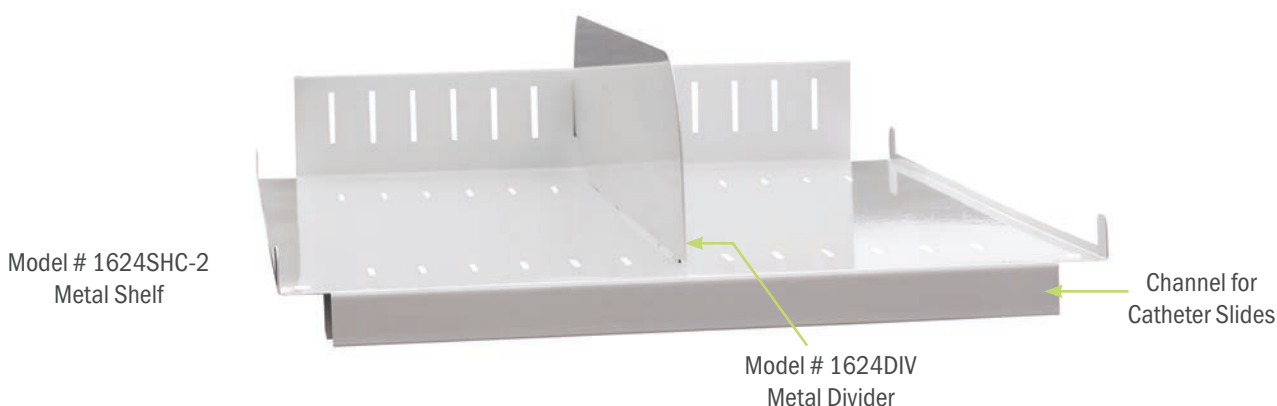
WIRE BASKET & DIVIDER KITS
Includes: Basket, Long Divider(s)
and Short Divider(s)

Model # 5BD11
shown above

*Max Weight Load – 2B Models is 20 lbs.; 5B Models is 40lbs; 8B Models 50 lbs.

METAL SHELVES & DIVIDERS

These **Metal Shelves** are used to store larger or bulky items in the LogiCell® units. The shelf has a 2.5" H lip on the rear to prevent items from sliding back. The front slopes down 1" H to provide a labeling surface. The **Metal Shelf** can also be inserted in the reverse direction to retain items on the shelf in a slanted position. There are slots every 1" for attaching the **Metal Divider** to the **Shelf**, and an added channel across the rear and front that accepts **Catheter Slides**.



METAL SHELVES WITH CHANNEL					
MODEL	DESCRIPTION	CELL SLOTS	MAX DIVIDERS	CATHETER SLIDES	D x W x H - IN.
1624SHC-2	For 16" D x 24" W Column	2	21	Accepts up to 3	16 x 24 x 2.5
2416SHC-2	For 24" D x 16" W Column	2	13	Accepts up to 5	23.5 x 15.875 x 2.5
2436SHC-2	For 24" D x 33" W Column	2	31	Accepts up to 7	23.5 x 32.75 x 2.5

METAL DIVIDERS		
MODEL	DESCRIPTION	W x H - IN.
164DIV	For 16" D Shelves	14 x 4
244DIV	For 24" D Shelves	21.75 x 4

CATHETER SLIDES

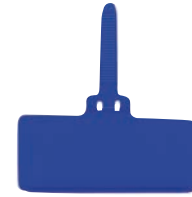
These **LogiCell Catheter Slides** are used to store catheters contained in pouches. The rack pulls out of the **Cabinet** for easy access. The front plate of each **Catheter Slide** has a 3" x 5" **Label Holder** for improved organization. **Catheter Slides** can be attached to the ceiling of a **LogiCell Cart or Cabinet**, or below a **Metal Shelf** (listed above).

CATHETER SLIDES	
MODEL	DESCRIPTION
CAT16HD	For 16" Shelf/Cabinet, 6 hooks
CAT24HD	For 24" Shelf/Cabinet, 9 hooks

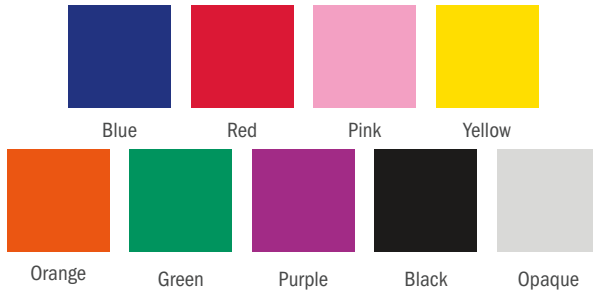


3-INCH LABEL HOLDERS

The LH3 3-Inch Label Holder is attached by a strap which is wrapped around a horizontal wire of the **Wire Basket** and therefore can be placed in various locations across the front of the **Wire Basket**. This 1" W x 3" H **Label Holder** is available in 9 colors (listed below) and comes in bags of 50.



Model # LH3-BLUE



(Actual color may vary, depending on your monitor setting or press run.)

3-INCH LABEL HOLDERS

MODEL	COLOR
LH3-BLUE	Blue
LH3-RED	Red
LH3-PINK	Pink
LH3-YELLOW	Yellow
LH3-ORANGE	Orange
LH3-GREEN	Green
LH3-PURPLE	Purple
LH3-BLACK	Black
LH3	Opaque

13.9-INCH LABEL HOLDERS

The LH13 Label Holders are 13.9" W x 2" H and are mounted by sliding onto the full width of the top edge of the **Wire Basket** or **Clear Tub**. The clear labeling area is folded over itself to create a protected space for the **Label** to slide into.



13.9-INCH LABEL HOLDERS

MODEL	COLOR
LH132PS	Clear
LH134PS	Clear

Model #
LH132PS

LOCKABLE DRAWERS

Lockable Drawers are on full-extension slides and are used to store supplies in **LogiCell Units**. Each drawer uses two (2) **Cell Slots**. A top to enclose the drawer and a surface that engages with the lock are included.

LOCKABLE DRAWERS		
MODEL	DESCRIPTION	INT. D x W - IN.
1624LDR	For 24" W Column	10.25 x 18.25 x 3.8
2416LDR	For 16" W Column	18 x 10.4 x 3.8
2436LDR	For 33" W Column	18 x 27.25 x 3.8
2436SSLDR-6LD	For 33" W Column	21.25 x 29.5 6.5



Model # 2416LDR

PARSTOR® SERIES

LogiQuip's **ParStor Series** is ideal for use in **Sterile Processing Departments (SPD)** and **Operating Rooms (OR)** to store surgical instruments, peel pouches, and sutures. Our highest-density storage system, **ParStor** is designed to be used where space is at a premium. With a variety of storage accessories that extend 100%, you will have full access to your supplies when needed. If you are looking for a mobile option, our **ParCarts** are made to move. Built on a sturdy **Dolly Platform** with **5" Casters**, large quantities of supplies can be transported over thresholds and throughout your facility with ease.

MAXIMIZE STORAGE DENSITY

Ideal for small storage areas, our **ParStor Series** utilizes every inch of vertical storage space to maximize storage capacity. The tall, **All-Welded Frames** are outfitted with **Chrome Slides** that can be mounted **Straight** or at an **Angle**. **ParStor Frames** have **Notches** to allow **Slides** and **Accessories** to be mounted at 1" intervals.

FLEXIBLE CONFIGURATIONS

LogiQuip's **ParStor Line** is available in multiple configurations to accommodate high-density storage in any situation. **ParStor Units** come in **Stationary** and **Movable** when you need to store supplies in place. Our **ParCarts** provide **Mobile** options when you need to move supplies from location to location. **ParCarts** come in **Open** or **Enclosed**, **Single-** and **Double-Wide**, and come in three heights.

CUSTOMIZE WITH ACCESSORIES

ParStor Slides accept several **Accessories** that can be extended 100% for full access to stored supplies and adjusted without tools. **Chrome Plated Waterfall Edge Shelves** are available for instrument storage that minimizes snags and tears. In addition, our **LogiCell Wire Baskets** and **Clear Tubs** are available with and without **Dividers** to fully customize your **ParStor Unit**.

TRANSPORT BASKET

Reduce the risk of **Wrapped Instrument Set** contamination with LogiQuip's **ParStor Transport Basket**. Move **Wrapped Instrument Sets** through the sterilization process without touching to help remove the risk of snagging or tearing that can lead to the contamination.



ParStor Mobile Cart



Open ParCart with Transport Basket



Enclosed ParCart

ENCLOSED PARCARTS

ENCLOSED PARCARTS

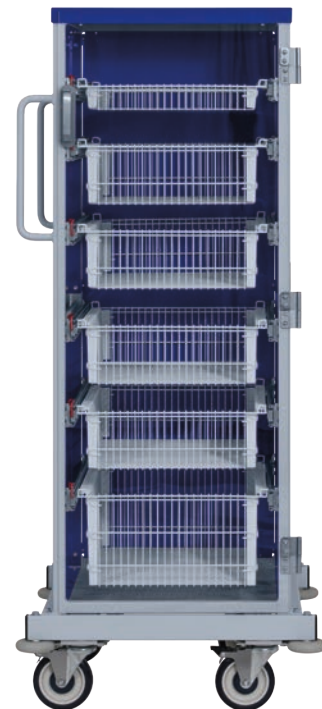
The integrated **Dolly** on **Enclosed ParCarts** creates stability, allows units to be moved between floors or departments, and is ideal for non-dedicated delivery systems. The frame is all-welded 1.5" square tubular epoxy-coated steel, enclosed with a blue epoxy-coated panel on three (3) sides and the top of the unit, and has **Vertical Slots** spaced at .4375".

ParCarts hold standard **ParStor 16" x 24" Baskets** and **Tubs** (see **Accessories** pages 10-11). The floor is a sturdy metal base with a **Solid Shelf** insert for infection control. Four (4) 5" quiet poly-swivel **Casters**, and **Donut Bumpers** on the corners are standard. The door(s) are 3/8" clear acrylic with (3) three hospital-grade hinges and chrome handles. **Frames** have **Vertical Slots** spaced at .4375".

All **Enclosed ParCarts** include a magnetic catch on the clear acrylic door (double models include two (2) doors). A pair of 12" **Vertical Push Handles** are included, protruding 3.125" on the left side at a height of 39-51".

Accessories are mounted with full-extension **Slides**. Each **Slide** is adjustable, without tools, to fit the **Slots** in the **Frame**. **Slanted Slides** can slant up to four (4) slots.

ENCLOSED PARCARTS		
MODEL	DESCRIPTION	D x W x H - IN.
500HEN-V	Single, 46 Slots	29 x 25.5 x 58.5
520HEN-V	Double, 92 Slots	29 x 44 x 58.5
600HEN-V	Single, 61 Slots	29 x 25.5 x 74
620HEN-V	Double, 122 Slots	29 x 44 x 74
500HEN-KL	Single, 46 Slots, Key Lock	29 x 25.5 x 58.5
520HEN-KL	Double, 92, Key Lock	29 x 44 x 58.5
500HEN-EL	Single, 46 Slots, eLock	29 x 25.5 x 58.5
520HEN-EL	Double, 92 Slots, eLock	29 x 44 x 58.5
600HEN-KL	Single, 61 Slots, Key Lock	29 x 25.5 x 74
620HEN-KL	Double, 122 Slots, , Key Lock	29 x 44 x 74
600HEN-EL	Single, 61 Slots, eLock	29 x 25.5 x 74
620HEN-EL	Double, 122 Slots, eLock	29 x 44 x 74



Model # 505EN-V

ENCLOSED PARCART KITS			
MODEL	DESCRIPTION	INCLUDES	D x W x H - IN.
500IV-EN-V	IV Cart, Single	(5) Pairs of Slanted Slides with Stop, (1) 5" Basket + (2) Long Dividers, (4) 8" Baskets + (8) Long Dividers	27.5 x 25.5 x 58.5
505EN-V	IV Cart, Single	(6) Pairs of Slanted Slides with Stop, (1) 2" Basket, (4) 5" Baskets, (1) 8" Basket	27.5 x 25.5 x 58.5

LOGIQUIP® QUIET TREATMENT (QT) CARTS

Our exclusive line of LogiQuip **Quiet Treatment (QT) Carts** are designed for general use or specialty applications, such as Isolation, Anesthesia and Emergency, and are available in a variety of sizes. All **QT Carts** come standard with a **Key Lock** for secure storage. With soft-closing drawers and hospital grade casters, our **QT Carts** help provide a quieter environment for patient care.

QUIET FEATURES

QT® Cart Quiet Features help to provide a quieter environment for patient care with **Soft Return Drawers**, **Silent Hospital Grade Casters**, and **Quiet eLock System**.



Soft Return Drawers

LARGE CAPACITY DRAWERS

Large Capacity Drawers are customizable with 12 drawer front color options and three (3) drawer heights (3", 6", 9"). Every **QT Cart** comes complete with one (1) 3" and one (1) 6" divider set.

SIMPLE SIDE RAIL

LogiQuip's **Simple Side Rail** provides the flexibility to customize your cart with several optional **Accessories** including **Glove Dispenser**, **Wastebasket**, and **Sharps Container Set**. See pages 33-36 for a full list.

SECURITY OPTIONS

Several **Security Options** are available to ensure supplies are kept secure including a **Key Lock** (standard), **Proximity Lock**, **Breakaway Lock**, or **Quiet eLock System**.



Proximity Lock (left)
Quiet eLock System (right)



STANDARD QT® CARTS

STANDARD QT CARTS

Our **Standard QT Cart** comes in multiple sizes and can be equipped with a **Key Lock**, **eLock (Electronic Lock)**, or **Proximity Lock** for secure storage. These general use carts are great for storing products in all patient areas and have **ABS Top Surfaces** that are light and easy-to-clean. All **Standard QT Carts** have a **Sliding Table Top Extension**, perfect for bedside use, with a maximum load of 17 pounds. Many **Standard QT Carts** are available immediately.



STANDARD QT CARTS				
MODEL	SERIES	D x W x H - IN.	NUMBER OF DRAWERS	DRAWER SIZE D x W - IN.
QT35W21K3369W	35QT	20 x 27 x 34.5	(2) 3", (1) 6", (1) 9"	15.75 x 24
QT38W24K3669W	38QT	20 X 27 X 37.5	(1) 3", (2) 6", (1) 9"	15.75 x 24
QT41W27K33669W	41QT	20 X 27 X 40.5	(2) 3", (2) 6", (1) 9"	15.75 x 24
QT44W30K333669W	44QT	20 X 27 X 43.5	(3) 3", (2) 6", (1) 9"	15.75 x 24
PPE QT CART				
QTP3366-WHI	QTP	21 x 20 x 34.5-46.5	(2) 3", (1) 6"	15.75 x 14

PPE QT CART

This **PPE QT Cart** comes standard with a **Key Lock** and **4" Casters**. The **Height-Adjustable Worktop** (range of 12") is 14"D x 18"W and is the perfect size for any laptop or tablet.



MODEL # QTP3366-WHI

NARROW & DOUBLE QT® CARTS

NARROW QT CARTS

LogiQuip **Narrow QT Carts** come standard with a **Key Lock**, **4" Casters**, and **ABS Top Surfaces** which are light and easy-to-clean. This line-up offers a **Sliding Table Top Extension**, perfect for bedside use, with a maximum load of 17 pounds. **Narrow Carts** are available in four (4) sizes with specific models available immediately.



NARROW QT CARTS				
MODEL	SERIES	D x W x H - IN.	NUMBER OF DRAWERS	DRAWER SIZE D x W - IN.
QTN34W21K3369W	34QTN	21 x 20 x 33.5	(2) 3", (1) 6", (1) 9"	15.75 x 14
QTN37W24K3669W	37QTN	21 x 20 x 36.5	(1) 3", (2) 6", (1) 9"	15.75 x 14
QTN40W27K33669W	40QTN	21 x 20 x 39.5	(2) 3", (2) 6", (1) 9"	15.75 x 14
QTN43W30K333669W	43QTN	21 x 20 x 42.5	(3) 3", (2) 6", (1) 9"	15.75 x 14



DOUBLE QT CART				
MODEL	SERIES	D x W x H - IN.	NUMBER OF DRAWERS	DRAWER SIZE D x W - IN.
QTD34W21K3666W	34QTD	21.5 x 44 x 34	8 Soft Close Drawers* Left: (Wide) one (1) 3" and three (3) 6" Right: (Narrow) one (1) 3" and three (3) 6"	Left (Wide): 15.75 x 24 Right (Narrow): 15.75 x 14

*Includes two (2) 3" and two (2) 6" Drawer Divider Sets.

SPECIALTY QT® CARTS & ACCESSORY PACKAGES

EMERGENCY CARTS

Emergency QT (Crash) Carts are designed with high-pressure situations in mind including the signature red color and a breakaway lock system. Using a wide assortment of **Accessories**, these carts have the right product for any emergency situation.

Our **QT Cart Emergency Package Model QT-EMERG-PKG** includes the following accessories:

- **VIV** – IV Pole
- **VDS** – Defibrillator Shelf
- **VCPR** – Cardiac Board and Hooks
- **VO2** – Oxygen Tank Holder
- **VTR** – Three-Sided Rail
- **QT-AD3** – (1) 3" Drawer Divider Set
- **QT-AD6** – (1) 6" Drawer Divider Set
- **TOS-15** – 15' Cord, 6 Outlets



MODEL # QT41B27K33669B
Shown with Accessories



MODEL # QT41R27B33669R
Shown with Accessories

ANESTHESIA CARTS

Anesthesia Carts store all necessary tools in a single, compact portable location with a locking system designed to keep unauthorized personnel out. The blue color makes cart identification easy.

Our **QT Cart Anesthesia Package Model QT-ANES-PKG** includes the following accessories:

- **VIV** – IV Pole
- **P-AB** – Back Bridge
- **VTB-1** – Two (2) Tilt Bins, 5-Bin System
- **VGD** – Glove Dispenser
- **VWB** – Waste Basket
- **QT-AD3** – (1) 3" Drawer Divider Set
- **QT-AD6** – (1) 6" Drawer Divider Set
- **VTR** – Three-Sided Rail
- **TD-1** – Tape Dispenser

SPECIALTY QT® CARTS & ACCESSORY PACKAGES



ISOLATION CARTS

Isolation Carts are a convenient way to store PPE in an easy-access location. The bright yellow color is a constant reminder to use proper PPE and precautions for infection control when entering a patient room.

Our **QT Isolation Package Model QT-ISO-PKG** includes the following accessories:

- **VWB** – Waste Basket
- **VGD** – Glove Dispenser
- **VTR** – Three-Sided Rail
- **VUH** – (2) Utility Hooks with Side Rail
- **VCR** – Coat Rack

MODEL # QT44Y30K3999Y
Shown with Accessories

PEDIATRIC EMERGENCY CARTS

Pediatric Emergency Carts come with nine (9) drawers that are color code compatible with pediatric color-coding systems. A **Key Lock** and **Sliding Table Top** extension (max load of 17 pounds) are standard.

Our **QT Pediatric Model QT44W30BPEDS2** includes the following:

- Lightweight Aluminum Design
- Aluminum Rails for Simple Accessory
- Overall Dimension – 20" D x 27" W x 43.5" H
- 30" Vertical Drawer Space
- Drawer Interior Dimensions – 15.25" D x 21.75" W
- Each Drawer Has Separate Breakaway Locks
- 5" Quiet Medical Casters – (1) Swivel, (2) Brake, (1) Swivel/Lock







MODEL #
QT44W30BPEDS2

QT® CART CUSTOM CONFIGURATIONS & COLOR OPTIONS

CUSTOM CART/CABINET CONFIGURATIONS

LogiQuip offers full customization of QT Carts from **Cabinet Size**, **Drawer Size**, and **Color**.

- Pick the **Cart Body** – Standard (27" wide) or Narrow (20" wide)
- Pick the **Body Color** –  White,  Red,  Yellow,  Blue
- Pick your **Drawer Size(s)** – 3", 6", 9"
- Pick your **Drawer Color** (see **Drawer Front Color Options** below)
- Add your **Accessories** (see pages 9-11)



Light Blue Drawer Color Option
MODEL# QT38W24E3669LB

DRAWER FRONT COLOR OPTIONS

LogiQuip QT Cart **Drawer Fronts** are available in twelve (12) colors; Blue, Cream, Green, Lavender, Light Blue, Orange, Pink, Red, Silver, Taupe, Yellow, and White.

(Actual color may vary, depending on your monitor setting or press run.)



SECURITY OPTIONS & MAINTENANCE PLAN

SECURITY OPTIONS

To help maintain patient safety and secure supplies, **QT Carts** come standard with **Key Locks**, however there are several lock options available. From **Breakaway Locks**, which offer quick access in critical situations, to **Proximity Keyless Entry** for the most secure applications, LogiQuip has the right lock system for every situation.

AVAILABLE LOCK OPTIONS

- **Central Key Lock** - Comes standard on ALL carts.
- **Breakaway Lock** - Vertical bar for quick access during emergency situations.
- **Keyless Electronic Lock** - Touchpad for easy access.
- **HID Proximity or iClass Lock** - Touchless badge entry records access for increased security.



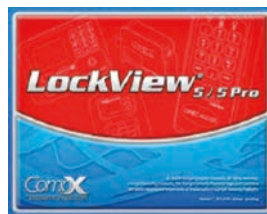
Central Lock
Secures All Drawers

eLOCK SPECS

- Whisper Quiet Operation
- 5,000 User Capacity
- Automatic Relock
- Key Override
- Dual Credential Capability
- Available WiFi Allows IT To:
 - Remotely Add/Delete Users
 - Automatically Download Audit Trails
 - Monitor Battery Level
- Requires LockView (VLS) For Remote Connection



eLock System With Proximity Switch
(Optional)



MODEL # VLS
Lock Management Software



MODEL # VPT
HID Proximity Tag



HID (MODEL # VPC) and
iClass Proximity Card

MAINTENANCE PLAN

We are pleased to offer a **QT Cart Maintenance Plan** to keep your NEW* LogiQuip **QT Cart** running like new. This hassle-free plan takes the maintenance of **QT Carts** off your to-do list.

Contact your LogiQuip **Sales Representative** for more information.

*Available at time of QT Cart Purchase, only.

STANDARD

WARRANTY

LogiQuip Dri-Stor Cabinets are covered by a **5-Year Limited Warranty** from date of receipt against defect in materials or workmanship under normal use and service, excluding electronic components. During this period, LogiQuip will, in its sole discretion, repair defects in materials or workmanship that existed when the product was received or replace the product. If the product is replaced, the new product will be warranted for the remaining term of the original product warranty period.

1-Year Warranty on electronic components and sub-assemblies.

3-YEAR

MAINTENANCE + STANDARD WARRANTY

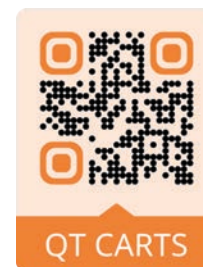
5-YEAR LIMITED WARRANTY + 36 MONTHS OF MAINTENANCE

- Maintenance Visits Every 18 Months include the following
- Visual & Functional Inspection
 - Locking Mechanism
 - Caster Function
 - Drawer Function
- Battery Replacement

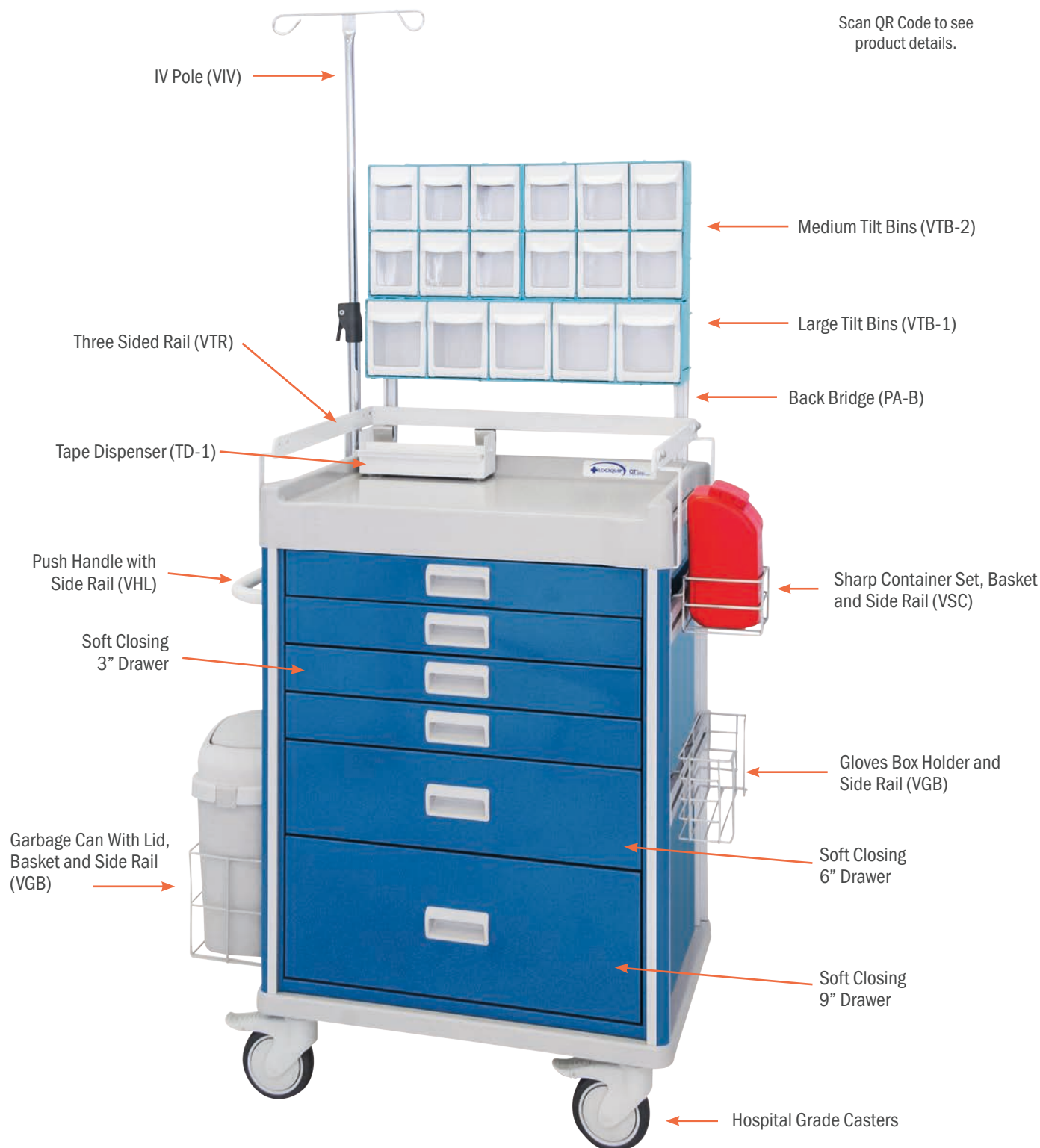
LOGIQUIP® QT® CARTS

QUIET STORAGE FOR PATIENT CARE

LogiQuip Quiet Treatment (QT) Carts comes standard with Key Lock for secure storage. With soft-closing drawers and hospital grade casters, our QT Carts help provide a quieter environment for patient care. Choose from our selection of Accessories (pages 33-35) to customize your QT Cart.



Scan QR Code to see product details.



QT® CART STOCK ACCESSORIES

ACCESSORIES

Logiquip's QT® Carts paired with the **Simple Side Rail** allows you to customize your Cart with over 30 optional **Accessories** listed on pages 33-35.



CPD



P-AB



QT-AD3, QTN-AD3



QT-AD6, QTN-AD6



TOS-15

VAB



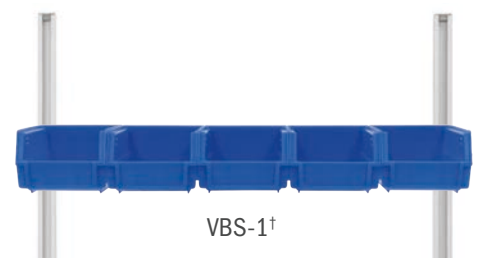
TD-1



VAD-1

ACCESSORIES	
MODEL	DESCRIPTION
CPD	Computer Drawer
P-AB	Back Bridge
QT-AD3	3" Standard Cart – 3 short, 6 adjustable, 2-3" strips, 6 T-clips
QT-AD6	6" Standard Cart Set – 3 short, 6 adjustable, 2-6" strips, 4 T-clips
QTN-AD3	3" Narrow Cart Set – 3 short, 6 adjustable, 2-3" strips, 6 T-clips
QTN-AD6	6" Narrow Cart Set – 3 short, 6 adjustable, 2-6" strips, 4 T-clips
TD-1	Tape Dispenser
TOS-15	15' Cord, 6 Outlets
VAB	Side Rail for QT/QTN Series Carts
VAD-1	Locking Medicine Drawer
VBS-1†	Small Fixed Bins and Accessory Rail Each Bin 7" x 4" x 3"

†Requires Back Bridge (P-AB)



VBS-1†

QT® CART ACCESSORIES



VCPR



VCR



VDS



VFH



VFT



VGB



VGD



VHL



VIV



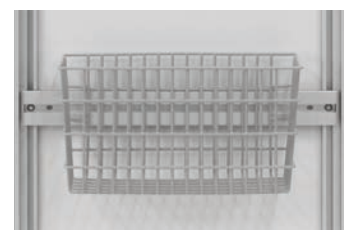
VLN



VGD-3



VLP

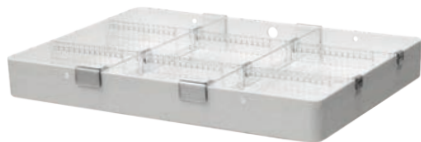


VMS

ACCESSORIES

MODEL	DESCRIPTION
VCPR	Cardiac Board and (2) Mounting Hooks
VCR	Coat Rack
VDS	Defibrillator Shelf
VFH	File Holder and Side Rail 6" x 15" x 22"
VFT	White Flip Down Shelf for QT/QTN Series Carts
VGB	Garbage Can With Lid, Basket and Side Rail
VGD	Gloves Box Holder and Side Rail
VGD-3	Triple Glove Box Holder and Side Rails (2)
VHL	Push Handle with Side Rail
VIV	IV Pole
VLN	Notebook Holder with Support Holder & Monitor Long Arm
VLP	Screen Holder with Support Holder & Monitor Long Arm
VMS	Multi-Storage Basket and Side Rail 7" x 13" x 5"

QT® CART ACCESSORIES



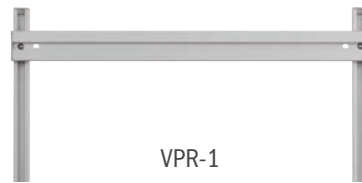
VMT-1



VMT-2



VO2



VPR-1



VSC



VSH



VTB-1†

VTB-2†



VTR



VTS†



VUH



VVP

ACCESSORIES

MODEL	DESCRIPTION
VMT-1	Medicine 15" x 22" x 2" with 9 compartments
VMT-2	Medicine 15" x 22" x 4.25" with 9 compartments
VO2	O2 Holder and Side Rail
VPR-1	Accessory Rail for P-AB
VSC	Sharp Container Set, Basket and Side Rail
VSH	Suction Machine Holder and Side Rail
VTB-1†	Large Tilt Bins (5)
VTB-2†	Medium Tilt Bins (12)
VTR	Three Sided Rail
VTS†	Top Shelf and Accessory Rail for QT Carts
VUH	Utility Hook Rack (2 Hooks) and Side Rail
VVP	Screen Holder with VESA Connector & Screen Holder
VWB	Waste Basket and Side Rail
VWC	Garbage Can With Rotating Lid, Basket and Side Rail

†Requires Back Bridge (P-AB)



VWB



VWC



www.logiquip.com

(800) 665-3760 | customerexperience@logiquip.net

LECC-07-24