



Complementary PRODUCTS



WHY LOGIQUIP®?



Healthcare exclusive since 1992, LogiQuip's **Inventory Management Solutions** are designed for Healthcare Professionals looking for a better way to manage supply chain tasks. With **Expert Advice**, **Innovative Solutions**, and **360° Service** that doesn't stop after the sale, LogiQuip's sole purpose is to ensure Healthcare Professionals have the supplies they need when they need them. Partnering with you to design and implement the right solutions, we give you time back to focus on what's important, Patient Care.

EXPERT ADVICE

With an in-depth understanding of the industry and a focus on **Infection Control** and **Lean Processes**, we partner with you to ensure we design the right solutions for you.

INNOVATIVE SOLUTIONS

Designed with an eye on the horizon, LogiQuip has **Innovative Solutions** that evolve with your facility. Our flexible and efficient options help to ensure you have the supplies you need when you need them.

360° SERVICE

LogiQuip's experienced **Sales Representatives** and **Award-Winning Customer Support Team** provide unparalleled service before, during, and after the sale.



LET US DO THE HEAVY LIFTING

WITH LABOR SHORTAGES AND THE EVER-INCREASING DEMAND TO DO MORE WITH LESS, the **LogiQuip Services Team** can help to decrease that burden with turnkey solutions to help ensure you have the supplies you need when you need them.

PROJECT MANAGEMENT

From our initial meeting with you through implementation, a LogiQuip **Services Team Member** will be assigned as your **Project Manager**, working with you every step of the way. Your **Project Manager** will serve as your single point of contact during the project life cycle. Together we will develop and implement project milestones until the work is complete. Contact your **Sales Representative** or call **(800) 665-3760** for more information.

ON-SITE ANALYSIS

Working with your LogiQuip **Representative**, an on-site analysis will be done to ensure that the **Project Manager** has a complete understanding of your current environment. During our on-site analysis we will review your current state, identify gaps, and align on the goals of the project.

PLANNING

Using a mix of innovative products, Lean principles, tried and true methods, and out of the box thinking, LogiQuip will provide a holistic plan with turnkey solutions to minimize downtime while decreasing your storage footprint and increasing PAR levels.

INSTALLATION & CONVERSION

LogiQuip is dedicated to providing on-time delivery, efficient installation, and supply conversion to minimize down time and time on site to get you up and running as quickly as possible.

ONGOING SUPPORT

With the project complete, we want to help you sustain the changes that have been made. With **Annual Inventory Reviews**, **Preventative Maintenance Plans**, and **Field Service** for in warranty and out of warranty repairs, we have you covered to keep things running smoothly.

TABLE OF CONTENTS

TABLE OF CONTENTS

WHY LOGIQUIP®?	2
LOGIQUIP SERVICES TEAM	3
LOGIQUIP COMPLEMENTARY PRODUCTS	5-15
KICK BUCKETS	6
INSTRUMENT TABLES	6
SOLUTIONS STANDS	6
MAYO STANDS	7
STOOLS	7
IV POLES	8
CYLINDER CARRIERS	8
LINEN STORAGE	9
CARTS	10
WIRE BASKETS	11
DUNNAGE RACKS	11
CART COVERS	11
PALLET RACKING	11
BINS	12-13
LABEL HOLDERS	14-15

LOGIQUIP® COMPLEMENTARY PRODUCTS

LogiQuip, your authority on storage solutions, also offers several complementary products to ensure you have everything you need at your fingertips. From **Mayo Stands** and **Solution Stands** to **Pallet Racking** and **Storage Bins** you can be sure that we've got you covered. Don't see what you need? Contact us! We will try to find you a solution that works for you.



LIMITED 5-YEAR WARRANTY

LogiQuip products are covered by a **Limited 5-Year Warranty** from date of receipt against defect in materials or workmanship under normal use and service, excluding **Electronic Components, Cart Covers, Custom Products, LogiCell Tambour Doors, Label Holders, and Casters**. During this period, LogiQuip will, in its sole discretion, repair defects in materials or workmanship that existed when the product was received or replace the product.

Visit LogiQuip.com/Warranty for more details.

LOGIQUIP® KICK BUCKETS, INSTRUMENT TABLES & SOLUTION STANDS

STAINLESS KICK BUCKETS

Stainless Steel, all-welded construction **Kick Buckets** are tip resistant and maneuver with ease on four (4) 2-inch **Casters**. These large capacity **Kick Buckets** with removable **Buckets** and **Wrap-Around Bumper** are an essential addition to any Operating Room, and available in two sizes.

KICK BUCKETS	
MODEL	SIZE
KB	12 Quart
KBSB	8.5 Quart

MODEL # KBSB



MODEL # KB



INSTRUMENT TABLES

With a wide variety of applications, **LogiQuip's** line of **Stainless Steel Instrument Tables** are available in a variety of sizes with a **Bottom Shelf** or **H-Brace** and 3-inch **Neoprene Casters**.

INSTRUMENT TABLES		
BOTTOM SHELF	H-BRACE	D x W x H - IN.
LQBT1620	LQBT1620H	16 x 20 x 34
LQBT1630	-	16 x 30 x 34
LQBT2436	LQBT2436H	24 x 36 x 34
LQBT2448	-	24 x 48 x 34
LQBT2460	-	24 x 60 x 34



MODEL #
LQBT2436H



MODEL #
LQBT1620

SOLUTION (RING) STANDS

Stainless Steel, fully-welded **Solution Stands** hold one (single) or two (double) **Basins**, depending on the model. Used in hospitals and surgery centers, some 7-Quart **Basin** models come with an **H-Brace** or a **Bottom Shelf**.

SOLUTION RING STANDS	
MODEL	DESCRIPTION
DBS	7 Quart, H-Brace, Double
SBS	7 Quart, Open Base, Single
DBSS	7-Quart, Bottom Shelf, Double
SBSS	7-Quart Bottom Shelf, Single



MODEL# SBS



MODEL# DBSS

LOGIQUIP® MAYO STANDS & STOOLS

MAYO STANDS

Keep surgical instruments and materials within reach during surgical procedures with LogiQuip **Mayo Stands**. This stand comes in **Single** or **Double Post Support**, is **Foot Operated**, has two (2) **Casters with Friction Lock**. With a removable instrument tray on a movable stand, these all-welded, **Stainless Steel Mayo Stands** are an essential tool in your OR.

MAYO STANDS		
MODEL	DESCRIPTION	REMOVABLE TRAY - IN.
M1319F	Single Post Support	12.625 x 19.125
M1621F	Single Post Support	16.25 x 21.25
MD1319F	Double Post Support	12.625 x 19.125
MD1621F	Double Post Support	16.25 x 21.25
MD2025F	Double Post Support	20 x 25



MODEL# MD2025F

FOOT (STEP) STOOLS

Also known as **Step Stools**, LogiQuip **Foot Stools** allow you to obtain items that are out of reach throughout your facility. With a tip resistant design, these **Foot Stools** have a non-skid mat, grip feet, and a weight capacity of either 350 pounds or 650 pounds.

FOOT STOOLS		
MODEL	DESCRIPTION	D x W x H - IN.
8862-SS	Stainless Stacking Foot Stool	18.875 x 20 x 6.25
12608S	Stainless Stacking Foot Stool	11.38 x 14 x 9
12608-HR	Stainless Steel w/Hand Rail	12 x 18 x 41



STOOLS

Designed to provide maximum comfort and support to the surgeon with an 18.5" wide contoured poly-foam seat cushion and a five-leg base for overall support. The hands-free foot pneumatic height adjustment allows for the greatest flexibility. Other options like a back rest are available upon request.

STOOLS	
MODEL	DESCRIPTION
21340	Stool with Seat
21340B	Stool with Seat and Backrest



LOGIQUIP® IV POLES & CYLINDER CARRIERS

IV POLES

LogiQuip's **Stainless Steel Adjustable IV Poles** are available with **Weighted Base** and **Compact Base** options. All **IV Poles** include a **4-Hook Top**, and **3" Casters** that provide stability and allow patients to easily move without interruption to intravenous therapies.

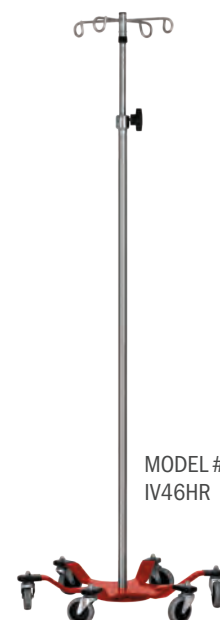
6-LEG WEIGHTED BASE IV POLES

MODEL	DESCRIPTION	COLOR*	WEIGHT LBS.
IV46HB	4-Hook Adjustable Pole 52-94" H, 22" Diameter Base, 3" Casters	Blue	22
IV46HW	4-Hook Adjustable Pole 52-94" H, 22" Diameter Base, 3" Casters	White	22
IV46HR	4-Hook Adjustable Pole 52-94" H, 22" Diameter Base, 3" Casters	Red	22
IV46HC	4-Hook Adjustable Pole 52-94" H, 22" Diameter Base, 3" Casters	Charcoal	22
IV46HY	4-Hook Adjustable Pole 52-94" H, 22" Diameter Base, 3" Casters	Yellow	22
IV46HG	4-Hook Adjustable Pole 52-94" H, 22" Diameter Base, 3" Casters	Green	22

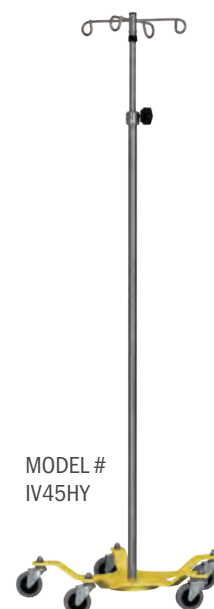
5-LEG WEIGHTED BASE IV POLES

MODEL	DESCRIPTION	COLOR*	WEIGHT LBS.
IV45HB	4-Hook Adjustable Pole 52-94" H, 22" Base, 3" Casters	Blue	21
IV45HW	4-Hook Adjustable Pole 52-94" H, 22" Base, 3" Casters	White	21
IV45HR	4-Hook Adjustable Pole 52-94" H, 22" Base, 3" Casters	Red	21
IV45HC	4-Hook Adjustable Pole 52-94" H, 22" Base, 3" Casters	Charcoal	21
IV45HY	4-Hook Adjustable Pole 52-94" H, 22" Base, 3" Casters	Yellow	21
IV45HG	4-Hook Adjustable Pole 52-94" H, 22" Base, 3" Casters	Green	21

* Powder Coat



MODEL #
IV46HR



MODEL #
IV45HY

CYLINDER CARRIERS

Cylinder Carriers are transport carts for one (1) D or E sized **Cylinder**. Each **Carrier** includes **Accessory and Mounting Hooks**, two (2) or (4) **Casters**, and two (2) or (4) **Support Legs**.

CYLINDER CARRIERS

MODEL	DESCRIPTION
CYL1	Holds one (1) D or E sized cylinder, two (2) Casters and Support Legs
CYL106	Holds six (6) D or E sized cylinders, four (4) Casters, two (2) with Brakes, Dual Lifting Handles
CYL12	Holds 12 D or E sized cylinders, four (4) Casters, two (2) with Brakes, Dual Lifting Handles
CYL120	Holds 20 D or E sized cylinders, four (4) Casters, two (2) with Brakes, Dual Lifting Handles



MODEL#
CYL106

LOGIQUIP® LINEN STORAGE

LINEN HAMPERS

LogiQuip Stainless Steel **Linen Hampers** have an epoxy-coated steel lid, a bottom rack, four (4) 2-inch Casters, and a storage pouch for extra bags. Optional foot operated lid available upon request.

LINEN HAMPERS		
MODEL	DESCRIPTION	DIMENSION - IN.
LQH-1000	Triangular Linen Hamper, Accommodates 18" Diameter Bags	57.25 Perimeter
LQH-1001	Triangular Linen Hamper, Accommodates 25" Diameter Bags	78.625 Perimeter
LQH-2000	Round Linen Hamper, Accommodates 18" Diameter Bags	18 Diameter
LQH-2001	Round Linen Hamper, Accommodates 25" Diameter Bags	25 Diameter

MODEL# LQH-1000



MODEL# LQH-2000



LINEN TRUCKS (POLY BULK/CONVERTIBLE)

LogiQuip rugged **Linen Trucks** are made with molded polyethylene bodies, full perimeter steel bases, industrial grade casters, and powder-coated for ultimate in durability. Both models are available in 16 standard colors. Custom color options are available. Color must be specified at time of order.

LINEN TRUCKS		
MODEL	DESCRIPTION	D x W x H - IN.
90P	Convertible Shelf Truck	48 x 28.5 x 62
72P	Bulk Truck, 38 Bushel	48 x 28.5 x 66.5



MODEL# 72P

LOGIQUIP® CARTS

UTILITY CARTS

LogiQuip Stainless Steel **Utility Carts**, are available in five sizes, have a durable Chassis Frame, three (3) Shelves; each electronically welded to the legs, and four (4) **Casters** with **Bumpers** on the legs to protect doors and walls. The **Top** and **Middle Shelves** have a 1" high lip on three sides. There is padding under the **Shelves** to effectively eliminate vibration and noise.

UTILITY CARTS			
MODEL	DESCRIPTION	MAX. WT - LBS.	D x W x H - IN.
311	3 Shelves, All Swivel Casters, 12" Clearance Between Shelves	300	16.25 x 27.5 x 32.125
322	3 Shelves, All Swivel Casters, 12.25" Clearance Between Shelves	300	18.375 x 30.75 x 33
411	3 Shelves, All Swivel Casters, 11.875" Clearance Between Shelves	500	16.75 x 27.625 x 32
422	3 Shelves, 4" Swivel Casters, 12" Clearance Between Shelves	500	19 x 31 x 32
444	3 Shelves, 5" Swivel Casters, 13" Clearance Between Shelves	500	22 x 39 x 37



MODEL# 444

MAIL & BASKET CARTS

LogiQuip **Mail & Basket Carts** are ideal for smaller items. These **Carts** have a nickle chrome plated **X-Frame**, white powder-coated steel **Baskets**, 3" rubber **Wheels**, ball bearing swivel **Casters**, and a 50-pound capacity. Some assembly is required.

MAIL & BASKET CARTS			
MODEL	DESCRIPTION	MAX. WT - LBS.	D x W x H - IN.
LQ-2DCR	Mail Cart with two (2) Baskets, 12" Top, 7" Bottom (Complete)	50	20 x 32 x 37
CA5	Basket Cart with X-Frame, one (1) 6" Basket, one (1) 12" Basket	50	20 x 30 x 35



MODEL# CA5

KIT COMPONENTS		
MODEL	DESCRIPTION	D x W x H - IN.
CA9	Basket Cart - Chrome Folding Frame (ONLY)	20 x 30 x 35
CA6	Basket - Chrome Wire for CA9	14 x 25 x 6
CA12	Basket - Chrome Wire for CA9	14 x 25 x 12



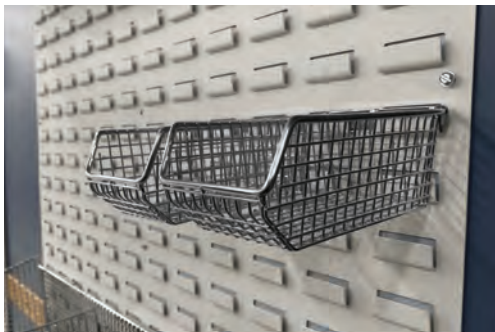
MODEL# LQ-2DCR

LOGIQUIP® WIRE BASKETS, COVERS & RACKS

WIRE BASKETS

Create a **Two-Bin System** on Flat Wire Shelving with these **Fine Mesh Basket Bins** that require less maintenance.

WIRE BASKETS			
MODEL	DESCRIPTION	BIN CARTON QTY	D x W x H - IN.
B340W	Chrome	10	10.5 x 8 x 7
B341W	Chrome	10	10.75 x 5.5 x 5
B346W	Chrome	10	10.75 x 11 x 5



DUNNAGE RACKS

LogiQuip aluminum **Dunnage Racks** are available in standard lengths, tubular or E-Channel Design and have a fully welded frame for strength.

DUNNAGE RACKS	
MODEL	D x W x H - IN.
AL1836	20 x 36 x 12
AL1848	20 x 48 x 12
AL2436	24 x 36 x 12
AL2448	24 x 48 x 12
AL2460	24 x 60 x 12



MODEL# AL1836

DISPOSABLE CART COVERS

LogiQuip clear disposable **Cart Covers** come in packs of 50.

DISPOSABLE CART COVERS	
MODEL	D x W x H - IN.
16AR	38 x 26 x 48
16BR	45 x 27 x 48
16CR	55 x 27 x 62
16ER	27 x 45 x 59



MODEL# 16ER

PALLET RACKING

Pallet Racking or **Racking with Wire Mesh Decking** is designed with pre-engineered construction and step-style, mig-welded beams for heavy load storage in bulk stores or off-site warehouses.

PALLET RACKING		
MODEL	DESCRIPTION	D x W x H - IN.
X97SWD144048144	3 Tier Wire Decking, Color: Lake Green, STARTER	48 x 144 x 144
X97AWD144048144	3 Tier Wire Decking, Color: Lake Green, ADD-ON	48 x 144 x 144

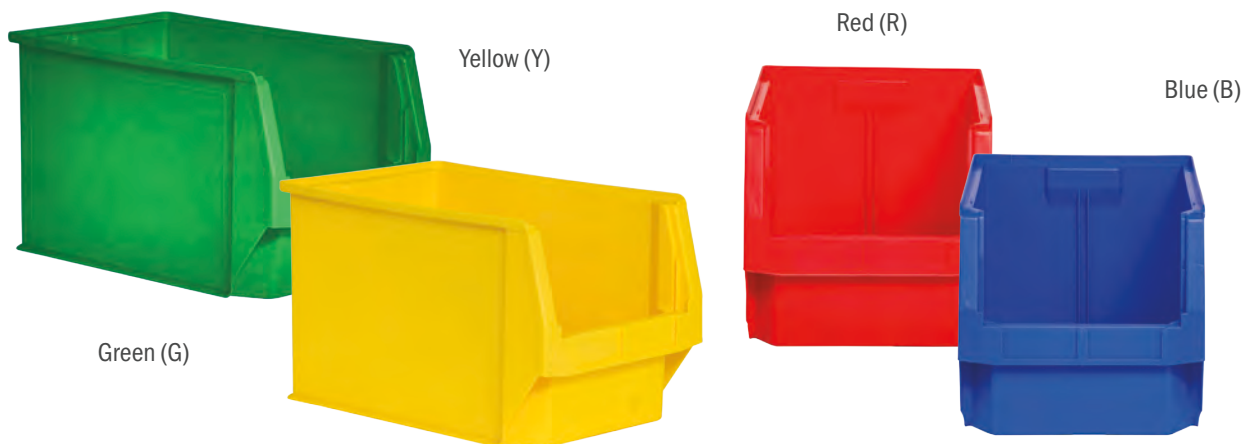


LOGIQUIP® STORAGE BINS

STORAGE BINS

LogiQuip **Storage Bins** come in a variety of sizes and colors†. Storage Bins can be hung from our **ParWall Louvered Panels**, stacked, or set up as a traditional **Two-Bin** system. **Dividers** are available for select storage **Bins**, and sold separately.

NOTE: Must order in the stated carton quantities listed below.



STORAGE BINS + DIVIDERS					
MODEL	COLOR†	BIN CARTON QUANTITY	D x W x H - IN.	OPTIONAL BLACK DIVIDERS	DIVIDER CARTON QUANTITY
B165	Yellow (Y)	6	18 x 8.25 x 9	—	—
B210	Blue (B), Green (G)	24	6.5 x 4.3 x 3	—	—
B220	Blue (B)	24	7.378 x 4.125 x 3	D220	1
B224	Blue (B), Red (R)	12	10.875 x 4.125 x 4	D224-6	6
B230	Blue (B), Red (R), Yellow (Y)	12	10.875 x 5.5 x 5	D230	6
B234	Blue (B), Green (G)	12	14.75 x 5.5 x 5	D234-6	6
B235	Blue (B), Red (R), Yellow (Y)	6	10.875 x 11 x 5	D230	6
B239	Blue (B), Green (G), Red (R), Yellow (Y)	6	10.75 x 8.25 x 7	—	—
B240	Blue (B), Red (R)	12	14.75 x 8.25 x 7	D245	6
B250	Blue (B), Yellow (Y)	6	14.75 x 16.5 x 7	D245	6
B271	Blue (B)	3	18 x 16.5 x 11	—	—
B280	Blue (B)	1	19.7 x 12.3 x 11.9	—	—

STORAGE BINS			
MODEL	COLOR†	BIN CARTON QTY	D x W x H - IN.
B6-1	Blue (B), Green (G), Red (R), Yellow (Y)	1	25.6 x 18.6 x 11.8
30-255	Blue (B), Red (R)	6	10.88 x 16.5 x 5
30-260	Blue (B), Green (G), Red (R), Yellow (Y)	6	18 x 11 x 10
30-288	Blue (B)	1	24 x 16.5 x 11



MODEL# 30-255R

†Add the correct color code to the end of the **Storage Bin** model number. **Storage Bin** colors; B=Blue, G=Green, R=Red, Y=Yellow.

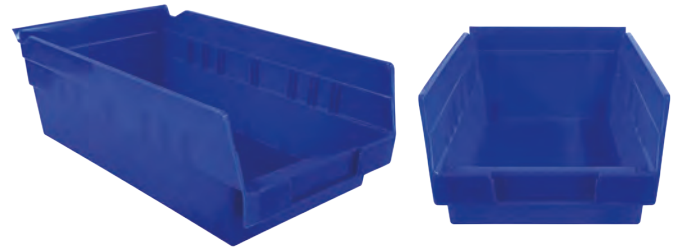
LOGIQUIP® SHELF, NEST & STACK BINS

SHELF BINS

Build out the traditional **Two-Bin** system using LogiQuip **Shelf Bins** on our **LQS Flat Wire Shelving**. These durable polypropylene **Shelf Bins** are one-piece construction and come in a variety of sizes and colors† to fit any need.

Shelf Bins can also nest inside of one another for easy, compact storage. Cross-wise **Black Dividers** are optional and sold separately unless noted below.

NOTE: Must order in the stated carton quantities listed below.



Model # SB120B

SHELF BINS + DIVIDERS

MODEL	COLOR†	BIN CARTON QUANTITY	D x W x H - IN.	OPTIONAL BLACK DIVIDERS	DIVIDER CARTON QUANTITY
SB094	Blue (B), Red (R)	10	12 x 12 x 14	—	—
SB110	Blue (B), Red (R)	24	11.625 x 2.75 x 4	—	—
SB120	Blue (B), Red (R)	24	11.625 x 4.125 x 4	SBD120	24
SB124	Blue (B), Red (R), Yellow (Y)	12	23.625 x 4.125 x 4	SBD120	24
SB128	Blue (B)	12	17.875 x 4.125 x 4	SBD120	24
SB130	Blue (B), Red (R)	12	11.625 x 6.625 x 4	SBD130	24
SB138	Blue (B)	12	17.875 x 6.625 x 4	SBD130	24
SB150	Blue (B), Red (R)	12	11.625 x 8.375 x 4	SBD150	24
SB158	Blue (B), Red (R)	12	17.875 x 8.375 x 4	SBD150	24
SB164	Blue (B), Yellow (Y)	6	23.625 x 6.625 x 4	SBD130	24
SB170	Blue (B), Red (R)	12	11.625 x 11.125 x 4	SBD170	24
SB174	Blue (B), Green (G)	6	23.625 x 11.125 x 4	SBD170	24
SB178	Blue (B)	12	17.875 x 11.125 x 4	SBD170	24
SB184	Blue (B), Yellow (Y)	6	23.625 x 8.375 x 4	SBD150	24

NEST & STACK BINS

Great for stacking when full or nesting when empty, these Bins are made of strong, high-density, industrial-grade polymers that will not rust, corrode or bend out of shape.

NEST & STACK BINS

MODEL	COLOR†	BIN CARTON QTY	D x W x H - IN.
35-180	Grey (GR)	6	18 x 11 x 6
35-190	Grey (GR)	6	19.5 x 15 x 10
35-200	Blue (B)	6	19.5 x 13.5 x 8
35-230	Blue (B), Grey (GR), Red (R)	3	23.5 x 19.5 x 13
35-240	Blue (B)	3	23.5 x 15.5 x 12
35-300	Blue (B)	3	19.5 x 29.5 x 15



MODEL# 35-180GR

†Add the correct color code to the end of the **Storage Bin** model number. **Storage Bin** colors; B=Blue, G=Green, R=Red, Y=Yellow. GR=Grey.

LOGIQUIP® LABEL HOLDERS

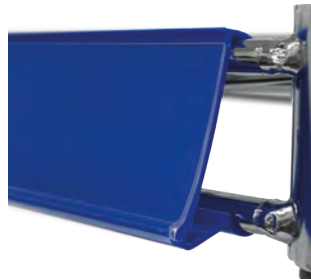
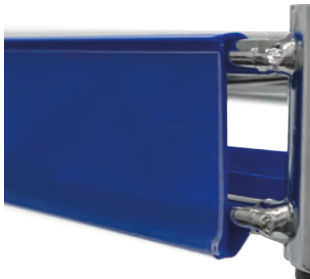
3-POSITION LABEL HOLDERS FOR WIRE SHELVING

Wire Shelving 3-Position Label Holders can be installed in three (3) positions; flat, a 10° angle or a 30° angle. These Label Holders have a clear front cover with either Clear (CL) or Blue (BL) color support.



3-POSITION LABEL HOLDERS

BLUE	CLEAR	WIDE
LH03BL	LH03CL	3"
LH24BL	LH24CL	24"
LH30BL	LH30CL	30"
LH36BL	LH36CL	36"
LH42BL	LH42CL	42"
LH48BL	LH48CL	48"
LH54BL	LH54CL	54"
LH60BL	LH60CL	60"
LH72BL	LH72CL	72"



LABEL HOLDERS

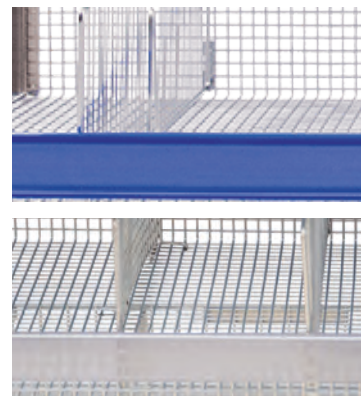
Label Holders for ParWall and ParWire are available in multiple sizes and two (2) colors; Clear (CL) or Blue (BL).

PARWALL LABEL HOLDERS

BLUE	CLEAR	WIDE
LH18BLPW	LH18CLPW	18"
LH36BLPW	LH36CLPW	36"
LH48BLPW	LH48CLPW	48"

PARWIRE & LQS BASKET LABEL HOLDERS

BLUE	CLEAR	WIDE
LH24BLPRSB	LH24CLPRSB	24"
LH36BLPRSB	LH36CLPRSB	36"
LH48BLPRSB	LH48CLPRSB	48"
LH60BLPRSB	LH60CLPRSB	60"



PARWIRE GLIDE BASKET LABEL HOLDERS

BLUE	CLEAR	WIDE
LH36BLSO	LH36CLSO	36"
LH48BLSO	LH48CLSO	48"
LH60BLSO	LH60CLSO	60"

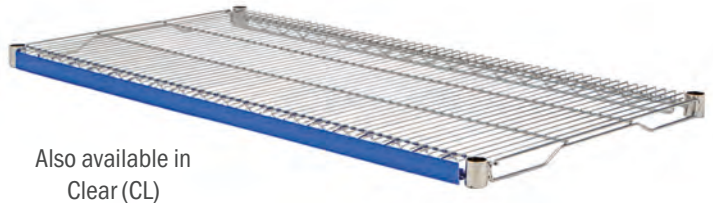


LOGIQUIP® LABEL HOLDERS

LABEL HOLDERS FOR WATERFALL EDGE SHELVING

Waterfall Label Holders are available in three (3) sizes and have a clear front cover with either **Clear (CL)** or **Blue (BL)** color support.

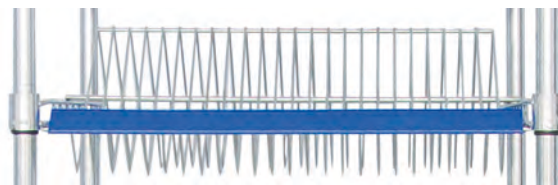
WATERFALL EDGE SHELVING LABEL HOLDERS		
BLUE	CLEAR	WIDE
LH48BLWF	LH48CLWF	48"
LH60BLWF	LH60CLWF	60"
LH72BLWF	LH72CLWF	72"



LABEL HOLDER FOR SUTURE SHELVES

Suture Shelf Label Holders are available in three sizes. **Single-Sided Shelves** will use one (1) Label Holder and **Double-Sided Shelves** will use two (2) Label Holders, one on each side.

SUTURE LABEL HOLDERS	
MODEL	WIDE
STRLH24BL	24"
STRLH36BL	36"
STRLH48BL	48"



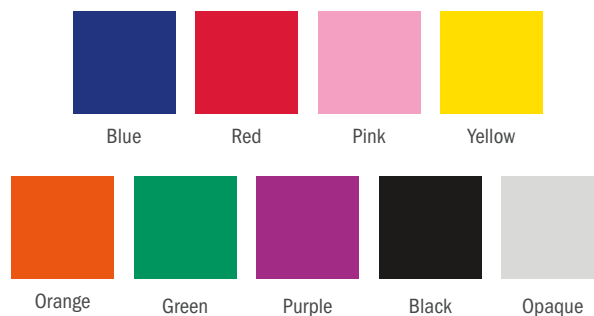
3-INCH LABEL HOLDERS FOR WIRE SHELVING

Our wide variety of 3-Inch Label Holder colors aid in color coding inventory, making supplies easier to find. These 1" W x 3" H Label Holders include a loop for attaching to Shelves or Baskets, come in bags of 50, and can be used on **ParWire Basket Shelving** and **LQS Shelving**. Choose from 9 colors; Blue, Red, Pink, Yellow, Orange, Green, Purple, Black, and Opaque.



Model #
LH3-BLUE

3-INCH LABEL HOLDERS	
MODEL	COLOR
LH3-BLUE	Blue
LH3-RED	Red
LH3-PINK	Pink
LH3-YELLOW	Yellow
LH3-ORANGE	Orange
LH3-GREEN	Green
LH3-PURPLE	Purple
LH3-BLACK	Black
LH3	Opaque



(Actual color may vary, depending on your monitor setting or press run.)



www.logiquip.com

(800) 665-3760 | customerexperience@logiquip.net

LCC-07-24