



# Product Catalog

3<sup>RD</sup> EDITION



Improving life.



Mid Central Medical has been serving the medical industry in North America for over 20 years. Started in the early 1990's by a Minnesota native, it has grown to be a leading manufacturer of medical equipment for the operating rooms in America's hospitals and surgery centers.

Founded on the principles of integrity and transparency, our products are built to stand the test of time. The healthcare environment is very specialized and we ensure that our products meet and exceed the needs of medical professionals. As we develop and design our products, we take into consideration infection control and make sure there are no areas that will harbor bacteria. Infection prevention is becoming a very large issue in today's healthcare setting and we make sure that our products are designed to minimize that risk.

Service is our area of focus at Mid Central Medical. Medical professionals are extremely special people and we strive to support them to the best of our ability. They should not have to continually follow up on orders placed and make sure that goods deliver on time. Our staff is here to do that for them so they can focus on what medical professionals

do best, caring for patients. After all, at some point in our lives, every one of us has been or will be a patient and we want them to care for us at the highest level. That is why we do everything we can to allow them to do that.

Positive outcomes are of utmost importance to us at Mid Central Medical. We want everyone that comes in contact with our company to have a positive result. The staff at our company is a very important part of that so we want every one of them and their families to succeed. We could not cover the area we do without our distributors and their reps so we want the best for them as well. Last but definitely most important, is the medical professional and the patients in their care. They are responsible for people's lives and we design our products and fine tune our service so every outcome is positive.

*"Everyone in every relationship has to succeed, and that's what drives us at **Mid Central Medical!**"*

*—Mid Central Medical Sales Manager*

## Table of Contents

Our Guarantee	04
Stainless Steel Tables	05
Mayo Stands	11
Additional OR Equipment	15
Storage, Transfer and Transport	19
Accessories for OR Tables	25
Arm and Hand Surgery Tables	33
IV Poles and Accessories	41
Index	50

 **MIDCENT  
MEDICAL**

Improving life.



# Our Guarantee

## Customer Service <2 hours

On a survey sent out to our customers, we found that everyone likes quick responses. When they ask a question, they expect a response. By examining our system, we at Mid Central Medical have guaranteed every request to be replied to in **less than 2 hours, many are answered within 20 minutes**. We understand that in the medical industry you have to be fast. Waiting is death. We have built that same level of service into our entire company. When you reach out to us, we take care of you.

## Stocked For You <24ship

We recently conducted a survey to see what question we were most often asked. We came up with the most common question being: 'When will it ship?' or 'Can you deliver that tomorrow?' As a team we sat down and reviewed how we could take care of that issue for our customers. This is how our **<24ship** program was born. We prepared a list of our best selling items that are in stock and ready to ship, guaranteed, every time. We have taken internal steps in our company to make sure that this is maintained, no matter what else happens. This brings certainty to our customers that we have it ready to ship and improves the result for the medical professional. You have what you need when you need it!

## Healthcare Guarantee ✓MedAssured

The healthcare industry requires a special standard for equipment. Many items may look equivalent but if they are not manufactured to medical standards, they will fail during use. Mid Central Medical has been manufacturing medical equipment for over 20 years and we have developed a standard that is tailored exclusively to the healthcare market.

### Our designs:

- › Minimize retention of fluids that can carry harmful bacteria.
- › Include smooth edges that must pass the 'glove test'.
- › Must pass our **MedAssured** inspection before leaving our facility.

*"It means a lot to me to know I can order from Mid Central and they will ship the product to me or my customer right away."*



# Stainless Steel Tables

A flat surface impervious to infection supported by 2 or 4 legs, used to hold instruments in the operating room.



# Features: Stainless Steel Tables

## The Mid Central Medical Table Difference



### REVEALED EDGE

Our tables have an 1 1/2" revealed edge. This greatly enhances the rigidity of the top and shelf. The more material you turn down, the stronger the edge will be. What does that mean for you? *The edge of you table is stronger so it will stand up to use in the OR better.*

### CASTERS

3" neoprene casters come as a standard feature. We do this because we believe every table should have good casters. We build this into the price and don't charge extra for it. What does that mean for you? *Our standard neoprene casters grip smooth floors even when they are wet so they roll quietly instead of sliding and skidding as hard black plastic casters do.*

### MATERIAL THICKNESS

Mid Central Medical Tables are 16 gauge construction. That means the top and shelf are constructed of 16 gauge (0.0625") material instead of 18 gauge (0.05). That is 25% thicker material! What does that mean for you? *Less deflection of the top when you place heavy items on it.*

### REINFORCING SUPPORTS

Welded in reinforcing supports under the top and shelf of any table longer than 4' with sound dampening cushion to prevent vibration of the top during transport.

### SQUARE LEGS

Many customers ask, why square instead of round? *The square leg has more surface for welding the shelf and top to the leg. 1" Square tubing also has 25% more actual stainless steel material in it than 1" round tube.*



If you want to make sure something doesn't fall off, we can add a **guardrail** to any table.



Need more storage? A drawer or **drawers** can be added to any table.



3" neoprene scuff resistant swivel are a standard feature. Locking **casters** available by request.

# Stainless Steel Tables



## MCM500 Series

### Instrument Tables with Shelf

Our most common instrument table with lower shelf. Also known as a back table in the OR. Fully welded stainless steel construction. These tables are manufactured to our OR specifications and do not have any open cavities to collect unwanted substances. All edges are glove friendly. Ships fully assembled.

- › Easy to clean
- › No ripped gloves
- › Transport & move smoothly

MCM501	16"W x 20"L x 34"H
MCM519	20"W x 20"L x 34"H
MCM502	16"W x 30"L x 34"H
MCM503	18"W x 33"L x 34"H
MCM504	20"W x 36"L x 34"H
MCM505	24"W x 36"L x 34"H
MCM506	20"W x 48"L x 34"H
MCM507	24"W x 48"L x 34"H
MCM508	24"W x 60"L x 34"H
MCM509	24"W x 72"L x 34"H



## MCM510 Series

### Instrument Tables with H-brace

Instrument table with H-brace adds more clearance around the base of the tables for storage and fitting around obstacles. Fully welded stainless steel construction. These tables are manufactured to our OR specifications and do not have any open cavities to collect unwanted substances. All edges are glove friendly. Ships fully assembled.

- › Easy to clean
- › No ripped gloves
- › Transport & move smoothly

MCM510	16"W x 20"L x 34"H
MCM511	16"W x 30"L x 34"H
MCM512	18"W x 33"L x 34"H
MCM513	20"W x 36"L x 34"H
MCM514	24"W x 36"L x 34"H
MCM515	20"W x 48"L x 34"H
MCM516	24"W x 48"L x 34"H
MCM517	24"W x 60"L x 34"H
MCM518	24"W x 72"L x 34"H



## MCM560 Series

### Nested Instrument Tables

Instrument tables that nest together for storage. U-brace also allows for maneuverability around obstacles. Fully welded stainless steel construction. These tables are manufactured to our OR specifications and do not have any open cavities to collect unwanted substances. All edges are glove friendly. Ships fully assembled.

- › Less storage space required
- › No ripped gloves
- › Transport & move smoothly

MCM560	Set of 6 Nested Tables
MCM561	14"W x 28"L x 32"H
MCM562	16"W x 32"L x 34"H
MCM563	18"W x 36"L x 36"H
MCM564	20"W x 40"L x 38"H
MCM565	22"W x 44"L x 40"H
MCM566	24"W x 48"L x 42"H



# Stainless Steel Tables

## MCM520 Series

### Utility Tables

Utility Table with 3-sided guardrail and lower drawers. Standard size is 16"W x 20"L and 34"H, custom sizes available. 2 locking caster on front to secure unit in place. Locking top drawer available. Fully welded construction and made to OR specifications.

- > Drawers slide freely
- > No ripped gloves
- > Custom options available, get what you want

MCM520	One Drawer and Lower Shelf
MCM521	Two Drawers and Lower Shelf
MCM522	Three Drawer and Lower Shelf
MCM523	Four Drawers and Lower Shelf



If you want to make sure something doesn't fall off, we can add a **guardrail** to any table.



Need more storage? A drawer or **drawers** can be added to any table.



3" neoprene scuff resistant swivel are a standard feature. Locking **casters** available by request.

# Stainless Steel Tables



## MCM523-T Series

### Stainless Steel Anesthesia Cart

MCM523-T

Stainless Steel  
Anesthesia Cart

This Anesthesia Cart boasts the largest tray size to hold instruments during spinal cases. Four lower drawers as well as a lower shelf provide extra storage. 2 locking casters to secure when needed.

- › Fully welded stainless steel construction
- › Large removable tray
- › Lots of storage space



## MCM540 Series

### Instrument Tables with Drawers

MCM548

24"W x 48"L x 34"H,  
Two drawers

MCM549

24"W x 72"L x 34"H,  
Three drawers

Stainless Steel Instrument Tables with added storage. Either 2 or 3 drawers under top of table. Lower shelf adds extra storage space. Fully welded stainless steel construction.

- › 2 locking casters, 2 swivel
- › Easy to clean
- › No ripped gloves



## MCM530 Series

### Tables for over OR Tables

MCM530

20"W x 36"L x 36-56"H

MCM531

24"W x 36"L x 36-56"H

MCM532

24"W x 48"L x 36-56"H

MCM533

46"W x 34"L x 36-56"H

MCM535

24"W x 60"L x 36-56"H

*\*Custom Sizes available*

Tables designed to straddle the OR Table for use during cases. They adjust in height from 36" to 56" to accommodate the height of the OR Table. They are fully welded construction, with no exposed bolts or protrusions on the top to puncture the drape. Handle removes and stores inside the lower leg if needed. Can be operated from either end. All exposed surfaces are of stainless steel construction. Reinforcing channel under top to provide extremely good rigidity. Top material is 14 gauge. Rolls on 4" premium casters, 2 have top brake to secure in place. Can also just be used as an ergonomic back table that can be adjusted in height.

- › No more punctured drapes
- › Easy to clean
- › Ease of mobility and locking in place
- › Ergonomic for reduced body fatigue



# Stainless Steel Tables

## MCM500 Series

### Work Tables

These work tables are designed for working on with much more strength than standard instrument tables. A great addition to any OR, Central Sterile Supply, Laboratory or Pharmacy. The top is comprised of 14 gauge material and a reinforcing channel on the underside to prevent deflection. Supported by 1.5" 16 gauge stainless steel square legs make it very sturdy. Table can be configured with either leg levelers or 4" casters that allow the table to be locked in place during use. Ships fully assembled and ready to use.

- **Made exclusively for the medical industry with glove friendly edges and no cavities to harbor bacteria**
- **2" revealed edge with return to create a very sturdy table edge**
- **Available with:**
  - 4" caster, two swivel locking, two swivel
  - Leg levelers that adjust in height to compensate for uneven floor substrates
  - With lower shelf for additional storage
  - With H-brace for extra clearance around base



Leg Leveler



H-Brace

MCM570	16"W x 20"L x 35"H
MCM571	16"W x 30"L x 35"H
MCM572	18"W x 33"L x 35"H
MCM573	20"W x 36"L x 35"H
MCM579	20"W x 48"L x 35"H
MCM574	24"W x 36"L x 35"H
MCM580	24"W x 48"L x 35"H
MCM582	24"W x 60"L x 35"H
MCM583	24"W x 72"L x 35"H
MCM589	24"W x 96"L x 35"H
MCM578	30"W x 30"L x 35"H
MCM588	30"W x 36"L x 35"H
MCM581	30"W x 48"L x 35"H
MCM584	30"W x 60"L x 35"H
MCM586	30"W x 72"L x 35"H
MCM590	30"W x 84"L x 35"H
MCM591	30"W x 96"L x 35"H
MCM592	36"W x 36"L x 35"H
MCM593	36"W x 48"L x 35"H
MCM585	36"W x 60"L x 35"H
MCM587	36"W x 72"L x 35"H
MCM594	36"W x 84"L x 35"H
MCM595	36"W x 96"L x 35"H

Customize your order: Item # + option

With Shelf add "-S"

With H-brace add "-H"

With Casters add "-CA"

With Leg Levelers add "-LL"



## Mayo Stands

Mobile Instrument Stand with removable tray that provides a place for sterile instruments and supplies used during surgery that is positioned over or adjacent to the surgical site.



Improving life.

# Mayo Stands

## MCM750 Series Foot Control Mayo Stands

Our most common Mayo Stand. Time tested and proven design. Removable tray for easy cleaning. Stainless steel foot pedal adjusts height from 36" to 62". Low profile feet slide easily under OR Table and hold stand in place. Constructed of #304 stainless steel and all seams are fully welded. Brass inserts offer easy height adjustment and 2" double ball bearing casters provide ease of mobility. Unique safe descend feature built in to prevent tray slamming down, sending instruments flying. Ships fully assembled and ready to use.

- › Easy to clean
- › Safe descend for patient and staff safety
- › Low profile base

### PROVEN DESIGN

Low profile feet slide easily under OR Table and hold stand in place. Unique safe descend feature built in to prevent tray slamming down, sending instruments flying.

### MATERIAL

Constructed of #304 stainless steel and all seams are fully welded. Brass inserts offer easy height adjustment and 2" double ball bearing casters provide ease of mobility.

MCM750	12 5/8"W x 19 1/8"H Tray Size
MCM751	16 1/4"W x 21 1/4"H Tray Size
MCM752	20"W x 25"H Tray Size



Removable *tray* for easy cleaning



*Foot pedal* adjusts height from 36" to 62"

# Mayo Stands



## MCM760 Series

### Thumb Control Mayo Stands

Single post mayo stand with thumb control button. Removable tray for easy cleaning. Stainless steel thumb control adjusts height from 36" to 62". Low profile feet slide easily under OR Table and hold stand in place. Constructed of #304 stainless steel and all seam are fully welded. Brass inserts offer easy height adjustment and 2" double ball bearing casters provide ease of mobility. Ships fully assembled and ready to use.

- › Can be controlled from anywhere without compromising the drape
- › No need to be standing to adjust stand
- › Low profile design slides under OR table base

MCM760	12 5/8"W x 19 1/8"W Tray Size
MCM761	16 1/4"W x 21 1/4"W Tray Size

## MOBILE BASE

Mobile Base can be added to any Mayo stand.  
Just add "-MB" to the SKU#.



## NEW MCM730 Series

### Knob Control Mayo Stands

Fully stainless steel welded construction but more economical version. Knob control with no-lose thumb knob. Designed for low volume OR's or physician's office. Removable tray for easy cleaning. Stainless steel thumb knob adjusts height from 36" to 62". Low profile feet slide easily under OR Table or exam table to hold stand in place. Constructed of #304 stainless steel and all seams are fully welded. Brass inserts offer easy height adjustment and 2" double ball bearing casters provide ease of mobility. Ships fully assembled and ready to use.

- › More economical but still a SS Mayo Stand
- › No-lose thumb knob
- › Low profile design to slide under OR Table or exam table

MCM730	12 5/8"W x 19 1/8"H Tray Size
MCM731	16 1/4"W x 21 1/4"H Tray Size



# Mayo Stands

## NEW MCM770 Series

### Lift Assist Tables

Built because of the request for a larger mayo stand, our lift assist Mayo Stand is the daddy of all Mayo Stands. Featuring a larger top, Crank lift, and large base, this is a heavy duty mayo stand. Top is 16 gauge material and is extremely rigid so when you put heavier objects on it, it doesn't deflect. Height adjusts from 36" to 56". Has two locking casters to hold it in place during surgery but easy to transport when needed. All edges including the handle are smooth to prevent puncture of the drape. Fully welded stainless steel construction. Ships fully assembled.

- › Ideal for large cases, especially ortho
- › Easy crank adjust to ergonomic height
- › Extra large surface and the needed stability

MCM770	30"W x 26"H Top Size
MCM771	32"W x 30"H Top Size



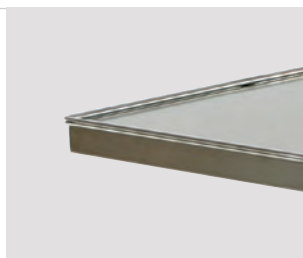
Large 4" **casters** with top brake for securing stand in place.



Extra large **top size** is over 50% larger than our largest mayo stand. Great for large cases, especially ortho



**Rail** around top to prevent instruments from rolling off top during surgery.



# Additional OR Equipment

Other equipment needed during surgery to assist surgeons and nurses to achieve consistent positive results for patients and staff.



Improving life.

# Additional OR Equipment



## MCM1000 Series

### Single Bowl Solution Stands

Stainless steel solution stand with one bowl. 16 gauge #304 stainless steel construction. Rubber bumpers inside basin ring keep basin firmly in place and reduce noise when rolling. 3" scuff resistant neoprene casters for ease of rolling. Measures 15"W x 18"L x 34"H. Available with shelf or H-brace depending on your preference. Ships fully assembled. 7 Qt. basin is included.

MCM1000	Single Bowl Solution Stand with H-Brace
MCM1001	Single Bowl Solution Stand with Shelf
MCM1007	Basin Only



## MCM1000 Series

### Double Bowl Solution Stands

Stainless Steel solution stand with two bowls. 16 gauge #304 stainless steel construction. Rubber bumpers inside basin ring keep basin firmly in place and reduce noise when rolling. 3" scuff resistant neoprene casters for ease of rolling. Measures 15"W x 33"L x 34"H. Available with shelf or H-brace depending on your preference. Ships fully assembled. 7 Qt. basin is included.

MCM1002	Double Bowl Solution Stand with H-Brace
MCM1003	Double Bowl Solution Stand with Shelf
MCM1007	Basin Only



## MCM540 Series

### Kick Bucket with Stand

Stainless steel Kick bucket with fully welded stainless steel frame. 2" swivel neoprene casters make it easy to move. Rubber bumpers hold bucket firmly in place. X-shaped base support keeps bucket supported off the floor even when it is full. Bucket has 12 qt. capacity and is removable. Perimeter rubber bumper protects walls. Ships fully assembled.

MCM540	Kick Bucket with Stand
MCM545	12 qt. Bucket Only



## MCM540 Series

### Sponge Receptacle with Stand

Stainless steel sponge receptacle with fully welded stainless steel frame. 2" swivel neoprene casters make it easy to move. Rubber bumpers hold basin firmly in place. X-shaped base support keeps basin supported off the floor even when it is full. Basin has 9.5 qt. capacity and is removable. Perimeter rubber bumper protects walls. Ships fully assembled.

MCM541	Sponge Receptacle with Stand
MCM542	9.5 qt. Receptacle only

# Additional OR Equipment



## MCM130 Series

### Chrome Step Stools

Economic Step Stool for use anywhere you need an extra few inches. Very inexpensive when you compare to strains from over reaching and/or falls from standing on incorrect step stools such as chairs or counters. Constructed of chrome plated steel. Top platform measures 11 3/8" x 14 1/4" with anti-slip rubber tread. 9" platform height. Available with handle for added safety.

MCM138	Chrome Step Stool
MCM139	Chrome Step Stool with Handle



## MCM140 Series

### Stacking Interlocking Step Stool

Stacking interlocking step stools provide a great solution to varying heights of staff in the OR. These stools can be used individually or together to create a platform. They also can be used stacked on top of each other to create higher platforms. They are constructed of 16 gauge #304 stainless steel with the same operating room specs as all our other products. Slip proof rubber top for safety. Nest together easily with integral lip to hold them in place. Top size is 12" x 18" and height is 5".

- > Stack for easy storage
- > Great way to get everyone at the right height in the OR

MCM140	Stacking Interlocking Step Stool
--------	----------------------------------



## MCM140 Series

### Step Stool Carry Cart

Carry Cart designed to hold 6 step stools. Ideal for storage and transport of step stools from one OR to another. Two locking casters secure cart in place. Fully welded stainless steel construction for easy cleaning.

- > Easy to clean
- > Saves time in transport and stores as well

MCM145	Step Stool Carry Cart
--------	-----------------------



## MCM140 Series

### Stirrup Carry Cart

Cart designed specifically for the storage and transport of stirrups. Accessory rail to hold clamps and hooks hold most types of stirrups. Other accessories can be stored in lower tray. Constructed of 16 gauge stainless steel for easy cleaning.

- > Makes it easy to store and transport stirrups
- > Keeps clamps and stirrups together and clean

MCM148	Stirrup Carry Cart
--------	--------------------



# Additional OR Equipment



## MCM850 Series Surgical Stools

Surgical stool is a very important feature in the OR. Physicians and nurses must be comfortable and yet have functional seating. This seating has 2 different 24" diameter aluminum base styles and different colors of 15 3/4" diameter vinyl tops. Rotation lock on seat keeps seat stable when needed. Designed specifically for the OR with waterfall seam for ease of cleaning. These stools have chrome 1/2" solid steel foot control for easy height adjustment from 19.5" to 26.5". Choose your base style and add your preferred backrest option.

- › High density fire resistant foam › Weight Capacity 300 lbs

**Add optional Backrest:** (Add "-B" to item #)

- › Optional adjustable back rest › Seat back dimensions: 15.75" x 9.5"

- › Overall Height w/Backrest: 35 1/2" to 42 1/2"



Standard  
Backrest



Crescent  
Backrest

MCM850	Black Aluminum Base
MCM851	Brushed Aluminum Base

Customize your order: Item # + option

### Backrest if desired:

Standard backrest: add "-B"

Crescent backrest: add "-CB"

### Vinyl color of your choice:

White	Teal
Tan	Medical Blue
Brown	Bright Green
Gray	Soft Purple
Black	

## MCM800 Series Physicians Stools

Much like our surgical stools but specifically designed for the clinical environment. Available with different 24" diameter base options and different height adjust options, these stools are able to meet every need. Choose your base, your method of height adjustment and your vinyl color. Seat is a generous 15 3/4" for comfort. If you prefer a backrest, add your desired option. Customizable to meet your needs.

- › High density fire resistant foam
- › 3/4" thick composite substrate with steel reinforcement plate

Customize your order: Item # + option

### Height adjustment option:

**Specify height:**

17"-22" standard

19"-26" add "-M"

23"-33" add "-H"

### Backrest if desired:

Standard backrest: add "-B"

Crescent backrest: add "-CB"

### Vinyl color of your choice:

White	Teal
Tan	Medical Blue
Brown	Bright Green
Gray	Soft Purple
Black	

\*Additional colors available by request.



Standard  
Backrest



Crescent  
Backrest

### 360 handle-360 degree hand ring adjustment-cannot be used with backrest

MCM860	Black Composite Base
MCM861	Bright Chrome Base
MCM862	Aluminum Base with toe caps

### Foot control-360 degree foot ring adjustment-standard height adj.: 19" to 24"

MCM863	Black Composite Base
MCM864	Bright Chrome Base
MCM865	Aluminum Base with toe caps

### 180 degree handle-"d" ring hand adjustment

MCM866	Black Composite Base
MCM867	Bright Chrome Base
MCM868	Aluminum Base with toe caps

### Knob control-single knob control

MCM869	Black Composite Base
MCM870	Bright Chrome Base
MCM871	Aluminum Base with toe caps

## MCM800 Series Gowning Benches



These benches for assisting with gowning are constructed with 16 gauge stainless steel. 450 lbs. weight capacity. Available with lower brace for storage under bench or also lower shelf to hold gowns, hats, or shoe covers. Larger 72" long models have 6 legs. Reinforcing channel under top for minimized deflection. Manufactured to our glove friendly specs specifically for the medical field. Custom sizes available.

- › Fully welded with our glove friendly manufacturing process
- › Easy to clean and keep that way with 304 stainless steel construction

MCM800	12"W x 24"L x 16"H Gowning Bench
MCM810	12"W x 24"L x 16"H Gowning Bench with Lower Shelf
MCM801	12"W x 36"L x 16"H Gowning Bench
MCM811	12"W x 36"L x 16"H Gowning Bench with Lower Shelf
MCM802	12"W x 48"L x 16"H Gowning Bench
MCM812	12"W x 48"L x 16"H Gowning Bench with Lower Shelf
MCM803	12"W x 60"L x 16"H Gowning Bench
MCM813	12"W x 60"L x 16"H Gowning Bench with Lower Shelf
MCM804	12"W x 72"L x 16"H Gowning Bench
MCM814	12"W x 72"L x 16"H Gowning Bench with Lower Shelf

# Storage, Transfer and Transport

Intelligent solutions for the safe and efficient storage, transfer and transport of patients and supplies in healthcare facilities



Improving life.

# Storage, Transfer and Transport



## MCM3000 Series Utility Cart with Baskets

MCM3000      Utility Cart with Baskets

These wire basket carts are useful for all kinds of storage and transport in the hospital. Economically price and large basket size makes it easy to get the job done. Constructed of chrome plated steel. Some assembly required. Folds for easy storage. Includes: 1"-12" poly coated wire basket and 1"-6" poly coated wire basket. Rolls on 3" hard rubber casters. Cart measures 29 3/4"W x 19 1/2"L x 35"H.

## MCM3000 Series Utility Carts

These stainless steel utility carts are constructed of 16 gauge stainless steel. Fully welded, they are easily customized to meet your needs. Available standard with 2 or 3 shelves. Push handle is constructed of stainless steel. Entire cart is stainless steel for easy cleaning. Available with locking casters to hold cart in place when not in transit. 3" neoprene casters are standard. Ships fully assembled.

MCM3008	16"W x 24"L x 34"H, Two shelves
MCM3009	16"W x 24"L x 34"H, Three shelves
MCM3005	24"W x 30"L x 34"H, Two shelves
MCM3006	24"W x 30"L x 34"H, Three shelves
MCM3010	18"W x 27"L x 34"H, Two shelves
MCM3011	18"W x 27"L x 34"H, Three shelves

Customize your cart:

Choose your shelf size  
Choose your height  
Choose the qty of shelves  
and spacing



Additional shelves.

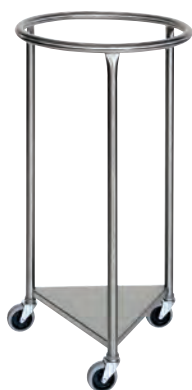


3" neoprene casters, locking casters available.



Stainless steel push handle cleans easily to minimize infection transfer.

# Storage, Transfer and Transport



## MCM2000 Series

### Round Stainless Steel Hampers

Constructed of 16 gauge fully welded stainless steel, these hampers will not rust. Lower shelf supports linen bag as it fills to prevent the bag dragging on the floor. Available in 2 different sizes to meet your needs. Fit standard size linen bags. 3" neoprene casters for ease of mobility even when full. 35" height for ease of loading.

MCM2000	18" Round Stainless Steel Hamper
MCM2001	25" Round Stainless Steel Hamper



## MCM2000 Series

### Triangle Stainless Steel Hampers

Constructed of 16 gauge fully welded stainless steel, these hampers will not rust. Lower shelf supports linen bag as it fills to prevent the bag dragging on the floor. Available in 2 different sizes to meet your needs. Fit standard size linen bags. 3" neoprene casters for ease of mobility even when full. 35" height for ease of loading.

MCM2001	18" Triangle Stainless Steel Hamper
MCM2005	25" Triangle Stainless Steel Hamper



## MCM2010 Series

### Square Chrome Hamper

Economical chrome hamper with flip top lid. Price so you can have anywhere you need it. Fits 18" hamper bag. Plastic top can be easily cleaned. Foot control open for hands free operation. Hamper measures 19"W x 19 1/2"D x 37 3/4"H.

MCM2010	Square Chrome Hamper with Lid
---------	-------------------------------



# Storage, Transfer and Transport



**MCM120 Series**  
**Slider Style Patient Transfer Boards**

Constructed of HDPE. 3/16" thick. Non-anti-static. Generous handle for easy transfers. Easily transfer patients from bed to gurney or OR Table. Smooth easy to clean surface. Available in two standard sizes.

MCM121	22"W x 33"L x 3/16"H
MCM122	22"W x 72"L x 3/16"H



**MCM120 Series**  
**Patient Transfer Roller Boards**

Roller style patient transfer boards easily transfer patients from bed to gurney to OR table. Constructed of aluminum for easy to clean and minimal weight reasons. Standard style patient transfer board. 15" width and 3 lengths to meet your needs.

MCM123	25"W Patient Transfer Roller Board
MCM125	30"W Patient Transfer Roller Board
MCM130	67"W Patient Transfer Roller Board



**MCM120 Series**  
**Wall Rack for Patient Transfer Roller Boards**

Constructed of stainless steel material for ease of cleaning and prevention of infection spread. Fits all types of roller boards. Easy to hand and keeps boards clean and out of the way, yet in the spot you need them. Each rack holds one board. Mounting hardware not included due to varying substrates.

MCM132	Wall Rack for Patient Transfer Roller Boards
--------	--

# Storage, Transfer and Transport



## MCM120 Series

### Wall Rack for Slider Style Patient Transfer Boards

MCM120

Wall Rack for  
Slider Style Patient  
Transfer Boards

Constructed of stainless steel material for ease of cleaning and prevention of infection spread. Hook holds small or large size patient transfer slider boards. Easy to hand and keeps boards clean and out of the way, yet in the spot you need them. Each rack holds one board. Mounting hardware not included due to varying substrates.



## MCM120 Series

### Replacement Covers for Patient Transfer Roller Boards

MCM124

25"W Replacement  
Cover for Patient  
Transfer Roller Board

MCM126

30"W Replacement  
Cover for Patient  
Transfer Roller Board

MCM131

67"W Replacement  
Cover for Patient  
Transfer Roller Board

Replacement covers for patient transfer roller boards. Fits corresponding length of roller board. Not guaranteed to fit other brands of roller boards.



# Storage, Transfer and Transport



## MCM670 Series Glove Boxes

Constructed of durable stainless steel. Easy to clean. Manufactured to our OR specifications for minimizing glove tears and not harboring bacteria. Durable one-piece construction. Available in horizontal and vertical options.

MCM670	Single Box
MCM671	Double Box Vertical
MCM672	Double Box Horizontal
MCM673	Triple Box Vertical
MCM674	Triple Box Horizontal
MCM675	Quad Box Vertical



## MCM640 Series Wall Shelves

Stainless steel 16 gauge one piece construction. Constructed to our OR specs for minimizing of bacteria and easy to clean. Available in 8", 10", 12", 15" and 18" deep. All shelves over 5' included center support. Mounting hardware not included due to differences in substrate. *Custom sizes available.*

MCM640	24" Wide x 10" Deep Stainless Steel Wall Shelf	MCM664	72" Wide x 12" Deep Stainless Steel Wall Shelf
MCM641	30" Wide x 10" Deep Stainless Steel Wall Shelf	MCM665	84" Wide x 12" Deep Stainless Steel Wall Shelf
MCM642	36" Wide x 10" Deep Stainless Steel Wall Shelf	MCM666	96" Wide x 12" Deep Stainless Steel Wall Shelf
MCM643	48" Wide x 10" Deep Stainless Steel Wall Shelf	MCM667	30" Wide x 12" Deep Stainless Steel Wall Shelf
MCM644	60" Wide x 10" Deep Stainless Steel Wall Shelf	MCM680	24" Wide x 15" Deep Stainless Steel Wall Shelf
MCM645	72" Wide x 10" Deep Stainless Steel Wall Shelf	MCM681	30" Wide x 15" Deep Stainless Steel Wall Shelf
MCM646	84" Wide x 10" Deep Stainless Steel Wall Shelf	MCM682	36" Wide x 15" Deep Stainless Steel Wall Shelf
MCM647	96" Wide x 10" Deep Stainless Steel Wall Shelf	MCM683	48" Wide x 15" Deep Stainless Steel Wall Shelf
MCM650	24" Wide x 8" Deep Stainless Steel Wall Shelf	MCM684	60" Wide x 15" Deep Stainless Steel Wall Shelf
MCM651	36" Wide x 8" Deep Stainless Steel Wall Shelf	MCM685	72" Wide x 15" Deep Stainless Steel Wall Shelf
MCM652	48" Wide x 8" Deep Stainless Steel Wall Shelf	MCM686	84" Wide x 15" Deep Stainless Steel Wall Shelf
MCM653	60" Wide x 8" Deep Stainless Steel Wall Shelf	MCM687	96" Wide x 15" Deep Stainless Steel Wall Shelf
MCM654	72" Wide x 8" Deep Stainless Steel Wall Shelf	MCM690	24" Wide x 18" Deep Stainless Steel Wall Shelf
MCM655	84" Wide x 8" Deep Stainless Steel Wall Shelf	MCM691	30" Wide x 18" Deep Stainless Steel Wall Shelf
MCM656	96" Wide x 8" Deep Stainless Steel Wall Shelf	MCM692	36" Wide x 18" Deep Stainless Steel Wall Shelf
MCM657	30" Wide x 8" Deep Stainless Steel Wall Shelf	MCM693	48" Wide x 18" Deep Stainless Steel Wall Shelf
MCM660	24" Wide x 12" Deep Stainless Steel Wall Shelf	MCM694	60" Wide x 18" Deep Stainless Steel Wall Shelf
MCM661	36" Wide x 12" Deep Stainless Steel Wall Shelf	MCM695	72" Wide x 18" Deep Stainless Steel Wall Shelf
MCM662	48" Wide x 12" Deep Stainless Steel Wall Shelf	MCM696	84" Wide x 18" Deep Stainless Steel Wall Shelf
MCM663	60" Wide x 12" Deep Stainless Steel Wall Shelf	MCM697	96" Wide x 18" Deep Stainless Steel Wall Shelf

# Accessories for OR Tables

Accessories that attach to the OR Table to support and hold patients anatomy during surgery for optimum surgical results.



Improving life.

# Accessories for OR Tables



## MCM401 Series

### Radiolucent Height Adjustable Armboard

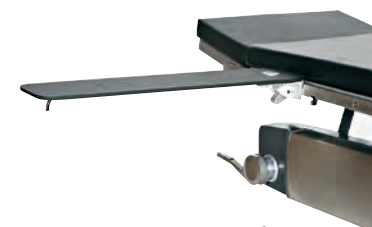
This armboard is designed to support patient's arms during surgery. Large portion of board is also radiolucent for C-arm capabilities. Rotates 180 degrees to desired position. It also adjusts in height to match the top of the OR table or to elevate the patients arm if needed. Adjusts up to 4" in height. Standard size is 6" x 26". Clamps securely to any American made OR table rail.

- › Radiolucent for C-arming
- › Adjusts in height to accommodate thicker OR table pads

MCM401	Radiolucent Armboard
--------	----------------------

Uses 26"L Armboard Pad  
*Pads sold separately*

[SEE PAGE 27](#)



Underside View

## MCM410 Series

### Standard Droplatch Armboards

This armboard is designed to support patient's arms during surgery. Standard droplatch style armboard for ease of use. Rotates 180 degrees to desired position with lever lock. Available in either 24" or 26" length. Clamps to any American made OR table rail.

- › Easy to use and adjust
- › Available in two lengths

MCM410	24"L Drop-Latch Armboard
--------	--------------------------

MCM411	26"L Drop-latch Armboard
--------	--------------------------

*Pads sold separately*

[SEE PAGE 27](#)



## MCM410 Series

### Bariatric Droplatch Armboards

This armboard is designed to support bariatric patient's arms during surgery. Standard droplatch style armboard for ease of use. Extra wide to accommodate larger arms. Rotates 180 degrees to desired position with lever lock. Clamps to any American made OR table rail.

- › Designed for Bariatric patients
- › 10" width

MCM412	26"L x 10"W Drop-Latch Bariatric Armboard
--------	---

*Pads sold separately*

[SEE PAGE 27](#)

# Accessories for OR Tables



## MCM440 Series

### Under Pad Armboards

This armboard is designed to slide under the OR Table pad and be held in place by the weight of the patient. Can be adjusted as needed. Phenolic material is completely radiolucent for C-arm capabilities. Exposed Armboard portion is 6"W x 24"L.

- › Radiolucent
- › Can be slid under the pad of any OR table or stretcher

MCM440	Under Pad Armboard
MCM442	Extra Wide Under Pad Armboard



## MCM440 Series

### Wall Mount Armboard Holders

Stainless steel rack holds armboards on the wall when not in use. Keeps them in a safe place to minimize damage and keep them where you need them. Constructed from 16 gauge stainless steel for easy cleaning and longevity. Will hold one armboard with standard 2" pad. *Available for thicker pads by request.*

- › Keeps armboards from getting dirty
- › Easy to clean

MCM445	Wall Mount Armboard Holder
MCM446	Wall Mount Bariatric Armboard Holder



## MCM400 Series

### Armboard Pads

Pads for armboards in your desired thickness and size. Standard foam with electrolyte cover like your OR table pads.

- › Easy to clean
- › Available in any thickness to match your OR table

MCM415	24"L x 2"H Armboard Pad
MCM416	26"L x 2"H Armboard Pad
MCM417	24"L x 3"H Armboard Pad
MCM418	26"L x 3"H Armboard Pad
MCM409	24"L x 4"H Armboard Pad
MCM419	26"L x 4"H Armboard Pad
MCM413	26"L x 10"W x 2"H Bariatric Armboard Pad
MCM443	21"L x 13.25"W x 2"H Extra Wide Armboard Pad



# Accessories for OR Tables



## MCM160 Series

### Stainless Steel Elite Clark Socket

MCM159

Stainless Steel  
Elite Clark Socket

Designed to clip on to the rail anywhere, not just at ends or at rail slots. Holds flat blade accessories as well as 3/4" round bar accessories with the same clamp. Solid stainless steel construction for strength and durability. Compatible with all American Made O.R. tables.

- › Two clamps in one
- › Clips onto rail anywhere



## MCM160 Series

### Stainless Steel Clark Socket

MCM160

Stainless Steel  
Clark Socket

Designed to hold round post accessories up to 11/16" diameter. Solid stainless steel construction for strength and durability. Compatible with American made OR Table rails. Clips onto rail at notches or rail ends.



## MCM160 Series

### Stainless Steel Side Rail Socket

MCM162

Stainless Steel Side  
Rail Socket

Designed to hold flat blade accessories that measure 1" x 1/4". Solid stainless steel construction for strength and durability. Compatible with American made OR Table rails. Clips onto rail at rail ends.



## MCM160 Series

### Aluminum Side Rail Socket

MCM161

Aluminum Side  
Rail Socket

Designed to hold flat blade accessories that measure 1" x 1/4". Aluminum construction make this clamps lighter but yet durable. Compatible with American made OR Table rails. Clips onto rail at notches or rail ends.

# Accessories for OR Tables



## MCM160 Series

### Universal Rail Clamp

MCM163

Universal  
Rail Clamp

Designed to hold round and flat blade accessories. Aluminum construction make this clamps lighter but yet durable. Compatible with American made OR Table rails. Clamps onto rail anywhere.



## MCM100 Series

### Rigid Anesthesia Screen

MCM105

Rigid Anesthesia  
Screen

Designed to hold the drape for anesthesiologists during surgery. Stainless steel construction makes this a very durable anesthesia screen. Mounts to rail with clark socket (*sold separately*). Adjusts in height and position with clark socket.

Mounts to rail with Clark Socket  
(*sold separately*)

[SEE PAGE 28](#)



## MCM100 Series

### Adjustable Anesthesia Screen

MCM101

Adjustable  
Anesthesia Screen

Designed to hold the drape for anesthesiologists during surgery. Stainless steel construction makes this a very durable anesthesia screen. Mounts to rail with clark socket (*sold separately*). Adjusts in height from 16"–26" with integral clamp.

Mounts to rail with Clark Socket  
(*sold separately*)

[SEE PAGE 28](#)



## MCM100 Series

### Malleable Anesthesia Screen

MCM106

Malleable  
Anesthesia Screen

Designed to hold the drape for anesthesiologists during surgery. Mounts to rail with two clark sockets (*sold separately*). Fully adjustable to easily set in desired position.

Mounts to rail with two  
Clark Sockets (*sold separately*)

[SEE PAGE 28](#)



# Accessories for OR Tables



## MCM100 Series Anesthesia Shield

This Stainless Steel Anesthesia Shield is designed to protect the patient's face during surgery and also provides a frame for the anesthesia drape. Constructed of durable stainless steel, it attaches to the OR table rail with two side rail sockets (*sold separately*). Top surface is 18 1/4" x 22 1/4" and the side supports are 24"L. Side supports measure 1/8" x 1".

MCM107

Stainless Steel  
Anesthesia Shield

Mounts to rail with two  
Side Rail Sockets (*sold separately*)

**SEE PAGE 28**



## MCM150 Series Single Loop Leg Prep with Pad

Stainless steel 5/8" diameter mounting post fits into standard clark socket (*sold separately*). Adjusts in height up to 30". Wipe-clean polyurethane pad. Weight limit is 50 lbs.

MCM157

Single Loop  
Leg Prep with Pad

MCM156

Replacement Pads  
Case of 12

Fits into standard Clark Socket  
(*sold separately*)

**SEE PAGE 28**



## MCM150 Series Candy Cane Stirrup

Constructed from 304 stainless steel for durability and longevity. Integral clamp allows height adjustment for 23"-41". Large 8" arc allows for additional leg clearance. Mounts to OR table rail with clark socket (*sold separately*). 1" wide cotton strap that conforms to 9" loops is included.

MCM150

Candy Cane Stirrup

MCM151

Replacement  
Cotton Straps

Mounts to rail with Clark Socket  
(*sold separately*)

**SEE PAGE 28**



## MCM610 Series TKR Support with Pad

Helps support legs for total knee replacement procedures. Constructed of stainless steel and polyoxy-methylene for ultimate support. Top portion is radiolucent. 5/8" diameter stainless steel post fits into clark socket (*sold separately*). Black pad included.

MCM612

TKR Support  
with Pad

MCM613

Replacement Pads  
Case of 12

Fits into Clark Socket  
(*sold separately*)

**SEE PAGE 28**

# Accessories for OR Tables



## MCM600 Series

### Picket Fence Leg Holder

The Picket Fence Leg Prep Unit efficiently preps both legs at once. It has a 5/8" diameter, stainless steel support bar with an easily adjustable height up to 30". The Picket Fence Leg Prep Unit is easy to clean. Attaches to OR Table rail with clark socket *(sold separately)*.

MCM611

Picket Fence Leg Holder

Mounts to rail with Clark Socket *(sold separately)*

[SEE PAGE 28](#)



## MCM600 Series

### Double Picket Fence Leg Holder

This double picket fence leg prepper efficiently preps both legs at once. Double flat blade supports bring added stability to this unit. Can adjust in height up to 30". Top is covered in rubber and lower supports are stainless steel making it easy to clean. Attaches to OR table rail with two side rail clamps *(sold separately)*.

MCM610

Double Picket Fence Leg Holder

Attaches to two side rail clamps *(sold separately)*

[SEE PAGE 28](#)



## MCM400 Series

### Width Extender and Pad

Designed to add width to your OR table for those patients that are a little wider or for specific procedures. Integral posi-lock rail clamps and aluminum side rail make this unit all-in-one. Available in 4" or 8" width. *(Pad sold separately)*.

MCM405

OR Table Width Extender 4"W x 20"H

MCM406

Bariatric OR Table Width Extender 8"W x 20"H

MCM404

2"W Pad for Width Extender (MCM405)

MCM407

2"W Pad for Bariatric Width Extender (MCM406)



## MCM100 Series

### Stainless Steel Hose Tree

Constructed of durable stainless steel, this hose tree is sure to last a long time. Easy to clean stainless steel. Efficiently keeps tubes and hoses in place and organized during surgery.

MCM110

Stainless Steel Hose Tree



# Accessories for OR Tables



## MCM740 Series

### Mayo Tray Attachment

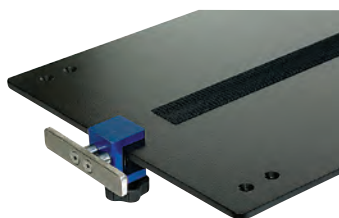
Mayo tray attaches directly to OR table rail for convenience and to save space in the OR. 5/8" mounting post attaches to the OR table rail with standard clark socket (*sold separately*). Height can be adjusted up to 26" above the table surface. 12 5/8" x 19 1/8" tray size.

MCM740

Mayo Tray  
Attachment

Attaches to rail with Clark Socket  
(*sold separately*)

[SEE PAGE 28](#)



## MCM160 Series

### Insta-Rail

Quickly and easily attach an OR table rail to any surface. An imaging table or an arm/hand table or any other surface up to 1 1/2" thick. Stainless steel rail is 6" long and standard American made rail dimensions. Holds any clamp that is compatible with American made OR table rails.

MCM168

Insta-Rail



## MCM160 Series

### Side Rail Extension

Need to have a little longer side rail? Look no further than this side rail extension. Clamps on to the OR table rail and extends it 6". Compatible with any American made OR table rail.

MCM167

Side Rail Extension



## MCM140 Series

### Accessory and Stirrup Carry Cart

Cart designed specifically for the storage and transport of stirrups and other OR table accessories. Accessory rail to hold clamps and hooks hold most types of stirrups. Other accessories can be stored in lower tray. Constructed of 16 gauge stainless steel for easy cleaning.

- › **Makes it easy to store and transport stirrups**
- › **Keeps clamps and stirrups together and clean**

MCM148

Accessory and  
Stirrup Carry Cart

# Arm and Hand Surgery Tables

Surfaces that attach to the OR table or stretcher for performing arm and hand surgeries.



Improving life.

# Arm and Hand Surgery Tables

## Arm and Hand Tables without Leg Support



### MCM300 Series Free Access Arm and Hand Table

This one-of-a-kind shape will make any surgeon smile. It allows easy access to their work with its narrow design and no leg to obstruct c-arm or X-ray procedures. Radiolucent center allows c-arm access. Clamps securely to the OR table rail with our integral posi-lock clamps. No extra clamps needed or to get misplaced. Our most compact arm/hand surgery table with 12" x 30" operating surface. Great for many procedures including fistula, angiogram and angioplasty.

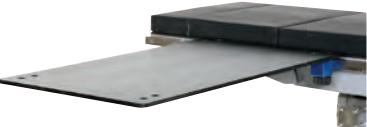
MCM301	Free Access Arm and Hand Table with 2" Pad
MCM302	Replacement 2" Pad



### MCM330 Series Carpal Arm and Hand Table

This rectangle shaped arm/hand table offers superior rigidity without the obstruction of a lower leg. Radiolucent center portion allows c-arm access. Clamps securely to the OR table rail with our integral posi-lock clamps. No extra clamps needed or to get misplaced. Full size 18" x 32" operating surface and plenty of lower support. This is the ultimate choice for carpal tunnel procedures and many others.

MCM330	Carpal Arm and Hand Table with 2" Pad
MCM312	Replacement 2" Pad



### MCM310 Series Carbon Fiber Rectangle Arm and Hand Table

This rectangle shaped arm/hand table made of lightweight but durable carbon fiber. Completely radiolucent for excellent C-arm image. Clamps securely to the OR table rail with our integral posi-lock clamps. No extra clamps needed or to get misplaced. Full size 18" x 32" operating surface but yet only weighs a mere 9 lbs. Perfect choice for minor arm/hand procedures.

MCM318	Carbon Fiber Rectangle Arm and Hand Table with 2" Pad
MCM312	Replacement 2" Pad

# Arm and Hand Surgery Tables

## Arm and Hand Tables with Leg Support That Clamp to the OR Table Rail



### MCM310 Series

#### Rectangle Phenolic Arm and Hand Tables

This rectangle arm/hand table is constructed of durable phenolic like the surface of the OR table. It clamps securely to the OR table rail and has a drop down leg for added support. Radiolucent center portion allows c-arm access. Clamps securely to the OR table rail with our integral posi-lock clamps. No extra clamps needed or to get misplaced. Full size 18" x 32" operating surface and plenty of lower support. Leg adjusts up to 12" to meet the ideal height for the surgeon.

MCM310	Rectangle Phenolic Arm and Hand Table, Single Foot, with 2" Pad
MCM311	Rectangle Phenolic Arm and Hand Table, Double Foot, with 2" Pad
MCM312	Replacement 2" Pad



### MCM310 Series

#### Rectangle Carbon Fiber Arm and Hand Tables

Constructed of durable and lightweight carbon fiber, this table has superior c-arm image as well as being very lightweight, but is the strongest table available. It clamps securely to the OR table rail and has a drop down leg for added support. Radiolucent center portion allows c-arm access. Clamps securely to the OR table rail with our integral posi-lock clamps. No extra clamps needed or to get misplaced. Full size 18" x 32" operating surface and plenty of lower support. Leg adjusts up to 12" to meet the ideal height for the surgeon.

MCM315	Rectangle Carbon Fiber Arm and Hand Table, Single Foot, with 2" Pad
MCM316	Rectangle Carbon Fiber Arm and Hand Table, Double Foot, with 2" Pad
MCM312	Replacement 2" Pad



# Arm and Hand Surgery Tables



Double-Leg



## MCM320 Series

### Hourglass Phenolic Arm and Hand Tables

This hourglass shaped arm/hand table is constructed of durable phenolic like the surface of the OR table. The hourglass shape extends to 24" width to provide wrist support for the surgeon. It clamps securely to the OR table rail and has a drop down leg for added support. Radiolucent center portion allows c-arm access. Clamps securely to the OR table rail with our integral posi-lock clamps. No extra clamps needed or to get misplaced. 15" x 32" operating surface and plenty of lower support. Leg adjusts up to 12" to meet the ideal height for the surgeon.

MCM320

Hourglass Phenolic Arm and Hand Table, Single Foot, with 2" Pad

MCM321

Hourglass Phenolic Arm and Hand Table, Double Foot, with 2" Pad

MCM322

Replacement 2" Pad



Double-Leg



## MCM320 Series

### Hourglass Carbon Fiber Arm and Hand Tables

Constructed of durable and lightweight carbon fiber, this table has superior c-arm image as well as being very lightweight, but is the strongest table available. The hourglass shape extends to 24" width to provide wrist support for the surgeon. It clamps securely to the OR table rail and has a drop down leg for added support. Radiolucent center portion allows c-arm access. Clamps securely to the OR table rail with our integral posi-lock clamps. No extra clamps needed or to get misplaced. Full size 15" x 32" operating surface and plenty of lower support. Leg adjusts up to 12" to meet the ideal height for the surgeon.

MCM325

Hourglass Carbon Fiber Arm and Hand Table, Single Foot, with 2" Pad

MCM326

Hourglass Carbon Fiber Arm and Hand Table, Double Foot, with 2" Pad

MCM322

Replacement 2" Pad

# Arm and Hand Surgery Tables

## Arm and Hand Tables with Mobile Base

Arm hand tables with Mobile bases offer the best of versatility. Able to roll from room to room without the nurses having to lift them is a great benefit. Adjusts in height from 30"-42". They come equipped with two locking casters and two swivel casters. Several different shape and size options of tops ensure your needs are met.



### MCM310 Series

#### Rectangle Arm and Hand Tables with Mobile Base

Our most popular size and shape of Arm/Hand table is the rectangle. Large 18" x 32" operating surface with excellent c-arm capabilities make this a first choice. Several different options are available to secure this unit to the table or stretcher.

**Roll Up:** This option simply rolls up to the OR table or stretcher and is held in place by the locking casters. Works for performing surgery on OR table, stretcher and/or stretcher chair.

**Clamps:** Includes our integral posi-lock clamps to ensure that the table remains securely attached to the OR table during surgery. A great option if you are performing surgery strictly on an OR table.

**Underpad:** Has a longer portion that can slide under the pad of the OR table or stretcher and is held in place by the patients weight. Works for performing surgery on OR table, stretcher and/or stretcher chair.

MCM310-MB	Rectangle Arm and Hand Table with Mobile Base, 2" Pad Included
MCM310-MBCL	Rectangle Arm and Hand Table with Mobile Base, Clamps Included, 2" Pad Included
MCM310-MBUP	Rectangle Arm and Hand Table with Mobile Base, Slides Under Pad, 2" Pad Included



### MCM320 Series

#### Hourglass Arm and Hand Tables with Mobile Base

Hourglass shape is popular because it allows a wide 24" outer edge for wrist support of the surgeon during surgery. 15" x 32" operating surface with excellent c-arm capabilities make this table a great fit where an hourglass shape is preferred. Several different options are available to secure this unit to the table or stretcher.

**Roll Up:** This option simply rolls up to the OR table or stretcher and is held in place by the locking casters. Works for performing surgery on OR table, stretcher and/or stretcher chair.

**Clamps:** Includes our integral posi-lock clamps to ensure that the table remains securely attached to the OR table during surgery. A great option if you are performing surgery strictly on an OR table.

**Underpad:** Has a longer portion that can slide under the pad of the OR table or stretcher and is held in place by the patients weight. Works for performing surgery on OR table, stretcher and/or stretcher chair.

MCM320-MB	Hourglass Arm and Hand Table with Mobile Base with 2" Pad Included
MCM320-MBCL	Hourglass Arm and Hand Table with Mobile Base, Clamps Included, 2" Pad Included
MCM320-MBUP	Hourglass Arm and Hand Table with Mobile Base, Slides Under Pad, 2" Pad Included



# Arm and Hand Surgery Tables

## Arm and Hand Tables with Outer Leg That Slide Under The Pad

As Ambulatory Surgery Centers become more common in the medical field, many surgeons wish to perform Arm/hand surgery on a Stretcher or Stretcher Chair. We have an extended range of Arm/Hand tables that slide under the pad of these units and are held in place by the weight of the patient. All tables include 2" thick standard pad.



### MCM340 Series

#### Rectangle Under Pad Arm and Hand Tables

Our most popular size and shape of Arm/Hand table is the rectangle. Large 18" x 32" operating surface with excellent c-arm capabilities make this a first choice. Several different material options are available.

**Phenolic:** Our most popular material for arm/hand surgery tables. Durable with good C-arm capabilities it makes a great table. Available with drop down leg and either single or double foot.

**Stainless Steel:** Durable and easy to clean with polycarbonate cutout 14" x 24" for C-arm capabilities. Thin stainless steel easily slides under the pad. Available with drop down leg and either single or double foot.

**Carbon Fiber:** Durable, light and thin this is an excellent under pad mount arm and hand table. Thin material easily slides under pad. Extremely light table only weighs 9 lbs! Easy to clean and excellent C-arm capability make this a great choice. Available with drop down leg and either single or double foot.

MCM335	Phenolic, Rectangle Under Pad Arm and Hand Table with Single Leg
MCM336	Phenolic, Rectangle Under Pad Arm and Hand Table with Double Leg
MCM340	Stainless Steel, Rectangle Under Pad Arm and Hand Table with Single Leg
MCM341	Stainless Steel, Rectangle Under Pad Arm and Hand Table with Double Leg
MCM342	Carbon Fiber, Rectangle Under Pad Arm and Hand Table with Single Leg
MCM343	Carbon Fiber, Rectangle Under Pad Arm and Hand Table with Double Leg



### MCM340 Series

#### Hourglass Under Pad Arm and Hand Tables

This hourglass shaped arm/hand table is constructed of durable phenolic like the surface of the OR table. The hourglass shape extends to 24" width to provide wrist support for the surgeon. It slides easily under the pad and is held in place by the patients weight. Radiolucent center portion allows c-arm access. 15" x 32" operating surface and plenty of lower support. Leg adjusts up to 12" to meet the ideal height for the surgeon.

MCM337	Phenolic, Hourglass Under Pad Arm and Hand Table with Single Leg
MCM338	Phenolic, Hourglass Under Pad Arm and Hand Table with Double Leg

# Arm and Hand Surgery Tables

## Arm and Hand Table Accessories

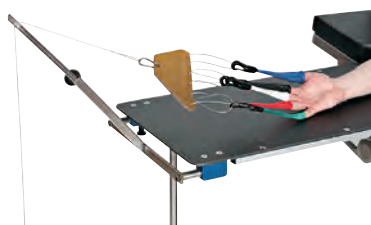


### MCM350 Series

#### Horizontal Traction Towers

This traction tower bolts on to existing holes on end of Arm/Hand table brackets. Manufactured of quality stainless steel construction. 3/4" outside dimension tube with 1/2" inner tube that telescopes to desired position. All necessary hardware included.

MCM344	18" Horizontal Traction Tower for Rectangle Tables
MCM345	24" Horizontal Traction Tower for Hourglass Tables



### MCM350 Series

#### Equalizing Device with Finger Traps

Used to keep pressure on digits when 3 or more are in traction. Can be used with IV Poles or other extremity systems. Stainless steel hooks and chain are fully autoclavable. Five different sizes of finger traps available to meet your needs.

MCM350	Equalizing Device and Finger Traps
MCM355	X-small Finger Trap
MCM356	Small Finger Trap
MCM357	Medium Finger Trap
MCM358	Large Finger Trap
MCM359	X-large Finger Trap



### MCM350 Series

#### Add-A-Rail

Need to add a rail onto the end of your Arm/Hand table for accessories to attach to? Solid stainless steel construction. Compatible to all American made OR table rail sockets. Easily mounts to end of Arm/Hand Table.

MCM314	18" Long Add-A-Rail for Rectangle Tables
MCM324	24" Long Add-A-Rail for Hourglass Table



### MCM300 Series

#### Replacement Pads

Standard 2" pads are available for all our Arm/Hand Tables. Custom thicknesses are available in order to meet the thickness of your current OR table pads.

MCM302	2" Thick Standard Pad for Free Access Table
MCM312	2" Thick Standard Pad for Rectangle Table
MCM322	2" Thick Standard Pad for Hourglass Table



# Arm and Hand Surgery Tables

Item #	Size			Material			Base				Table Attachment		Pad Included
	Rectangle	Hourglass	Free Access	Carbon Fiber	Stainless Steel	Phenolic	Mobile Base	Flip Up Double Leg	Flip Up Single Leg	No Leg	OR Table Rail	Under Pad	2"
MCM301			X			X				X	X		X
MCM310	X					X			X		X		X
MCM310-MB	X					X	X						X
MCM310-MBCL	X					X	X				X		X
MCM310-MBUP	X					X	X					X	X
MCM311	X					X		X			X		X
MCM315	X			X						X	X		X
MCM316	X			X					X		X		X
MCM318	X			X				X			X		X
MCM320		X				X			X		X		X
MCM320-MB		X				X	X						X
MCM320-MBCL		X				X	X				X		X
MCM320-MBUP		X				X	X					X	X
MCM321		X				X		X			X		X
MCM325		X		X					X		X		X
MCM326		X		X				X			X		X
MCM330	X					X				X	X		X
MCM335	X					X			X			X	X
MCM336	X					X		X				X	X
MCM337		X				X			X			X	X
MCM338		X				X		X				X	X
MCM340	X				X				X			X	X
MCM341	X				X			X				X	X
MCM342	X			X					X			X	X
MCM343	X			X				X				X	X



## IV Poles and Accessories

Slender Stands and accessories that assist in the suspension of containers of liquid for the administration of IV to patients.



Improving life.

# IV Poles and Accessories



## MCM210 Series

### 5 Leg Economy IV Poles

This 5 Leg IV Pole was designed with functionality in mind. The 5 leg design and 24" diameter base brings the needed stability. Neoprene 2" casters offer adequate mobility and are silent while transporting. 1" diameter pole is available in chrome finish or durable stainless steel finish. Pole adjusts in height from 52"-93" with no-lose friction knob. Rubber inserts on outer edges of legs protect walls and other objects from scuffing.

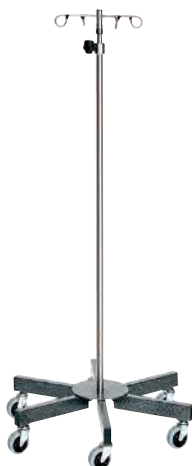
➤ Various top options are available

#### Chrome Poles

MCM201	Chrome IV Pole W/Thumb Knob, 2 Hook Top, 5 Leg Base W/2" Casters
MCM202	Chrome IV Pole W/Thumb Knob, 4 Hook Top, 5 Leg Base W/2" Casters

#### Stainless Steel Poles

MCM210	SS IV Pole W/2 Hook Top, No Lose Thumb Knob, 5 Leg Base W/2" Casters
MCM210-RT	SS IV Pole W/8 Hook Rake-Top, No Lose Thumb Knob, 5 Leg Base W/2" Casters
MCM211	SS IV Pole W/4 Hook Top, No Lose Thumb Knob, 5 Leg Base W/2" Casters
MCM212	SS IV Pole W/6 Hook Top, No Lose Thumb Knob, 5 Leg Base W/2" Casters



## MCM230 Series

### 6 Leg Economy IV Poles

This 6 Leg IV Pole was designed with functionality in mind. The 6 Leg design and 24" diameter base brings the needed stability. Neoprene 3" casters offer ease of mobility and are silent while transporting. 1" diameter pole is available in chrome finish or durable stainless steel finish. Pole adjusts in height from 52"-93" with no-lose friction knob. Rubber inserts on outer edges of legs protect walls and other objects from scuffing.

➤ Various top options are available

➤ Base is epoxy coated in the standard charcoal color

#### Chrome Poles

MCM234	Chrome IV Pole W/Thumb Knob, 2 Hook Top, 6 Leg Base W/3" Casters
MCM235	Chrome IV Pole W/Thumb Knob, 4 Hook Top, 6 Leg Base W/3" Casters

#### Stainless Steel Poles

MCM237	SS IV Pole W/2 Hook Top, No Lose Thumb Knob, 6 Leg Base W/3" Casters
MCM237-RT	SS IV Pole W/8 Hook Rake-Top, No Lose Thumb Knob, 6 Leg Base W/3" Casters
MCM238	SS IV Pole W/4 Hook Top, No Lose Thumb Knob, 6 Leg Base W/3" Casters
MCM239	SS IV Pole W/6 Hook Top, No Lose Thumb Knob, 6 Leg Base W/3" Casters



## MCM220 Series

### 5 Leg Space-Saving IV Poles

This 5 Leg Space-saving IV Pole was designed to save valuable space in the hospital without sacrificing stability. Base is 16" diameter and weights 22 lbs. 3" scuff resistant casters are standard for ease of mobility. Height adjusts from 52"-94" with no-lose thumb knob. Available in chrome finish or durable stainless steel finish. Different top options are available to meet your needs. Designed to hold 1-2 infusion pumps. Standard epoxy coated base color is charcoal.

Colored bases are available at no extra charge to help each department maintain their assets. Simply add a – to the part number and follow with the first letter of the color.

Standard colors are:

CHARCOAL	R: RED	B: BLUE
Y: YELLOW	G: GREEN	

#### Chrome Poles

MCM220-2	Chrome IV Pole W/Thumb Knob, 2 Hook Top, 5 Leg 22 lb. Base W/3" Casters, Charcoal
MCM220	Chrome IV Pole W/Thumb Knob, 4 Hook Top, 5 Leg 22 lb. Base W/3" Casters, Charcoal

#### Stainless Steel Poles

MCM221	SS IV Pole W/2 Hook Top, No Lose Thumb Knob, 5 Leg 16"dia. 22 lb. Base W/3" Casters, Charcoal
MCM222-RT	SS IV Pole W/8 Hook Rake-Top, No Lose Thumb Knob, 5 Leg 16"dia. 22 lb. Base W/3" Casters, Charcoal
MCM222	SS IV Pole W/4 Hook Top, No Lose Thumb Knob, 5 Leg 16"dia. 22 lb. Base W/3" Casters, Charcoal
MCM223	SS IV Pole W/6 Hook Top, No Lose Thumb Knob, 5 Leg 16"dia. 22 lb. Base W/3" Casters, Charcoal

# IV Poles and Accessories



## MCM270 Series

### 5 Leg Spider IV Poles

This 5 Leg spider base IV Pole was designed to maximize stability. Base is 22" diameter and has a low center of gravity with enhanced weight for added stability. 3" scuff resistant casters are standard for ease of mobility. Height adjusts from 50"-92" with no-lose thumb knob. Available in chrome finish or durable stainless steel finish. Different top options are available to meet your needs. Designed to hold several infusion pumps. Standard epoxy coated base color is charcoal.

Colored bases are available at no extra charge to help each department maintain their assets. Simply add a – to the part number and follow with the first letter of the color.

#### Standard colors are:



Chrome Poles	
MCM272	Chrome IV Pole W/Thumb Knob, 2 Hook Top, 5 Leg Spider Base W/3" Casters, Charcoal
MCM273	Chrome IV Pole W/Thumb Knob, 4 Hook Top, 5 Leg Spider Base W/3" Casters, Charcoal
Stainless Steel Poles	
MCM270	SS IV Pole W/Thumb Knob, 2 Hook Top, 5 Leg Spider Base W/3" Casters, Charcoal
MCM271-RT	SS IV Pole W/Thumb Knob, 8 Hook Rake-Top, 5 Leg Spider Base W/3" Casters, Charcoal
MCM271	SS IV Pole W/Thumb Knob, 4 Hook Top, 5 Leg Spider Base W/3" Casters, Charcoal
MCM271-6	SS IV Pole W/Thumb Knob, 6 Hook Top, 5 Leg Spider Base W/3" Casters, Charcoal



## MCM270 Series

### 6 Leg Spider IV Poles

This 6 Leg spider base IV Pole is our most sturdy IV Pole. Base is 22" diameter and has a low center of gravity with enhanced weight for added stability. 3" scuff resistant casters are standard for ease of mobility. Height adjusts from 50"-92" with no-lose thumb knob. Available in chrome finish or durable stainless steel finish. Different top options are available to meet your needs. Designed to hold multiple infusion pumps. Standard epoxy coated base color is charcoal.

Colored bases are available at no extra charge to help each department maintain their assets. Simply add a – to the part number and follow with the first letter of the color.

#### Standard colors are:



Chrome Poles	
MCM277	Chrome IV Pole W/Thumb Knob, 2 Hook Top, 6 Leg Spider Base W/3" Casters, Charcoal
MCM278	Chrome IV Pole W/Thumb Knob, 4 Hook Top, 6 Leg Spider Base W/3" Casters, Charcoal
Stainless Steel Poles	
MCM275	SS IV Pole W/Thumb Knob, 2 Hook Top, 6 Leg Spider Base W/3" Casters, Charcoal
MCM276-RT	SS IV Pole W/Thumb Knob, 8 Hook Rake-Top, 6 Leg Spider Base W/3" Casters, Charcoal
MCM276	SS IV Pole W/Thumb Knob, 4 Hook Top, 6 Leg Spider Base W/3" Casters, Charcoal
MCM279	SS IV Pole W/Thumb Knob, 6 Hook Top, 6 Leg Spider Base W/3" Casters, Charcoal



# IV Poles and Accessories

## IV Pole Buying Guide

### Pole Selections

#### Standard



**Chrome Pole:**  
For use in non-acute areas.

#### Premium



**Stainless Steel Pole:**  
For use in OR and our most durable pole option

### Caster Selections

#### Standard



**2" Ball Bearing Casters:**  
Quality Caster for Lighter Weight Bases.

#### Premium



**3" Ball Bearing Casters:**  
For heavy duty bases. Better elevator transitions.

### Base Selections

#### Standard



**5 Leg Economy Base:**  
24" diameter  
For lighter use areas.



**6 Leg Economy Base:**  
24" diameter  
Better stability for use where only standard IV is administered.

#### Premium



**5 Leg Weighted Base:**  
16" diameter  
Available in five standard colors.  
For infusion pumps when paired with SS Pole.



**5 Leg Spider Low Center of Gravity Base:**  
22" diameter  
Available in five standard colors  
For infusion pumps when paired with SS Pole.



**6 Leg Spider Low Center of Gravity Base:**  
22" diameter  
Available in five standard colors  
For infusion pumps when paired with SS Pole. Most stable pole and best elevator transition.

### Top Selections

#### Standard



**2-Hook Ram's Horn Top:**  
For light use areas.



**4-Hook Ram's Horn Top:**  
For standard applications.

#### Premium



**6-Hook Ram's Horn Top:**  
For use in specialty applications where several different IV Bags are needed.



**8-Hook Rake Top:**  
For use in specialty applications where several different IV Bags are needed.

# IV Poles and Accessories

## IV Pole Buying Guide

Item #	POLE SELECTION		CASTER SELECTION		BASE SELECTION					TOP SELECTION			
	Standard	Premium	Standard	Premium	Standard		Premium			Standard		Premium	
	Chrome Pole: For use in non-acute areas.	Stainless Steel Pole: For use in OR and our most durable pole option.	2" Ball Bearing Casters: Quality Caster for Lighter Weight Bases.	3" Ball Bearing Casters: For heavy duty bases. Better elevator transitions.	5 Leg Economy Base: <i>24" diameter</i> For lighter use areas.	6 Leg Economy Base: <i>24" diameter</i> Better stability for use where only standard IV is administered.	5 Leg Weighted Base: <i>16" diameter</i> Available in five standard colors. For infusion pumps when paired with SS Pole.	5 Leg Spider low center of Gravity Base: <i>22" diameter</i> Available in five standard colors For infusion pumps when paired with SS Pole.	6 Leg Spider low center of Gravity Base: <i>22" diameter</i> Available in five standard colors For infusion pumps when paired with SS Pole. Most stable pole and best elevator transition.	2-Hook Ram's Horn Top: For light use areas.	4-Hook Ram's Horn Top: For standard applications.	6-Hook Ram's Horn Top: For use in specialty applications where several different IV Bags are needed.	8-Hook Rake Top: For use in specialty applications where several IV Bags are needed.
MCM201	X		X		X					X			
MCM202	X		X		X						X		
MCM210		X	X		X					X			
MCM210-RT		X	X		X								X
MCM211		X	X		X						X		
MCM212		X	X		X							X	
MCM220	X			X			X			X			
MCM221		X		X			X			X			
MCM222		X		X			X				X		
MCM222-RT		X		X			X						X
MCM223		X		X			X					X	
MCM234	X			X		X				X			
MCM235	X			X		X					X		
MCM237		X		X		X				X			
MCM237-RT		X		X		X							X
MCM238		X		X		X					X		
MCM239		X		X		X						X	
MCM270		X		X				X		X			
MCM271		X		X				X			X		
MCM271-RT		X		X				X					X
MCM271-6		X		X				X				X	
MCM272	X			X				X		X			
MCM273	X			X				X			X		
MCM275		X		X					X	X			
MCM276		X		X					X		X		
MCM276-RT		X		X					X				X
MCM277	X			X					X	X			
MCM278	X			X					X		X		
MCM279		X		X								X	



# IV Poles and Accessories



## MCM290 Series

### 6 Leg Stainless Steel Spider Base IV Poles

This IV Pole is completely made of stainless steel to inhibit any type of corrosion or rust. 24" Diameter Base is heavy duty weighted stainless steel with low center of gravity. 1" stainless steel pole adjust from 50"-92" with no-lose thumb knob. Available with any of our 4 top options. Premium sealed ball bearing casters make this pole easy to maneuver and very stable.

- > Premium casters
- > Fully welded stainless steel construction

MCM295-2	SS IV Pole W/Thumb Knob, 2 Hook Top, 6 Leg SS Spider Base W/3" Ball Bearing Casters
MCM295	SS IV Pole W/Thumb Knob, 4 Hook Top, 6 Leg SS Spider Base W/3" Ball Bearing Casters
MCM295-6	SS IV Pole W/Thumb Knob, 6 Hook Top, 6 Leg SS Spider Base W/3" Ball Bearing Casters
MCM295-RT	SS IV Pole W/Thumb Knob, 8 Hook Rake-Top, 6 Leg SS Spider Base W/3" Ball Bearing Casters



## MCM280 Series

### Double IV Pole with Steering Wheel and Tray

This IV Pole is designed for areas where several infusion pumps are needed such as ICU. Double poles make more spots to hang pumps and the two four hook tops make it easier to keep IV lines organized. Height adjusts from 85"-110". Our 6 Leg spider base with 3" ball bearing casters make this a very stable and easy to move pole. Full circle steering wheel makes it easy to maneuver from any side. Complete pole construction is 304 grade stainless steel. Removable plastic tray makes a great place for storage and a spot to set things during bag changes and setup.

MCM286	Double IV Pole with Steering Wheel and Tray
--------	---



## MCM290 Series

### 5 Leg Foot Control IV Pole

Fully welded stainless steel constructed IV Pole with 22" diameter 5 Leg spider base. Foot control height adjustment leaves hands free to adjust pole, IV Tubing and bags. 2" swivel casters make moving easy. Bar to protect foot pedal from getting bumped. 4 Hook ram's horn style top. 1.25" diameter pole adjust in height from 52"-94". Easy to raise, simply by lifting pole to desired height. Ships fully assembled-no further assembly required.

MCM290	5 Leg Foot Control IV Pole
--------	----------------------------



## MCM200 Series

### Rigid IV Pole

An IV Pole that attaches directly to the OR Table rail. Designed to hold IV near the point of use for convenience as well as to save space in the OR. Constructed of durable stainless steel. Hook design allows bags to be changed rapidly. Pole measures 27 1/2" high. 1/2" diameter mounting post attaches to OR table rail with standard clark socket (*sold separately*).

MCM215	Rigid IV Pole
--------	---------------

Attaches to Clark Socket (*sold separately*)

**SEE PAGE 28**

# IV Poles and Accessories



## MCM200 Series Lift Assist IV Poles

An IV Pole designed for the nurse! Eliminates lift bags up high and straining backs and shoulders. Simply load the pole up with bags and turn the crank to raise. Adjusts in height from 56"-96" just by turning the crank. Large 6 leg base adds the needed stability. 3" scuff resistant casters provide unmatched maneuverability. Base post is 2" square stainless steel tube with upper extension tube of 1 1/4" stainless steel tube. No electric motors or hydraulic pumps to replace. Available with 4-hook, 8-hook or 28-hook top.

MCM251	4 Hook Stainless Steel Lift Assist IV Pole
MCM252	8 Hook Stainless Steel Lift Assist IV Pole
MCM253	28 Hook Stainless Steel Lift Assist IV Pole



## MCM200 Series Uni-Pole

This IV pole attaches to any round or square tube up to 1 1/4". Universal clamp design allows 180 degree rotation to set the pole wherever you need it. Adjust in height with integral clamp. Constructed of stainless steel for ease of cleaning. No additional clamps needed.

MCM216	Uni-Pole (adjust from 18"-36")
--------	-----------------------------------



## MCM200 Series IV Towbar

Constructed of stainless steel for transport of IV Poles, this towbar can transport two IV Poles at the same time. It can also drop into the hole on most stretchers and wheelchairs. Adjusts from 20"-30".

MCM240	Telescoping IV Towbar
MCM245	Universal Clamp with Hole for Attaching Towbar



## MCM200 Series Universal Clamp for IV Pole Accessories

This aluminum clamp attaches most of our IV pole accessories to the IV Pole. It will also clamp to tables, wheelchairs, carts or any other round or square tube up to 1 1/2" in diameter.

MCM231	Universal Clamp for IV Pole Accessories
--------	--



# IV Poles and Accessories



## MCM200 Series

### Universal Clamp for Lift Assist IV Pole

MCM257

Universal Clamp for  
Lift-Assist IV Pole

This clamp attaches most of our IV pole accessories to the lift assist IV Pole. Works much the same as our MCM231 but for the Lift Assist IV Pole. Makes any accessory work with the Lift Assist Pole.



## MCM200 Series

### Power Strip for IV Pole

MCM232

Power Strip for  
IV Pole

Fit out with 6 Hospital Grade Receptacles and an integral clamp, this is a great IV Pole Power Strip. Measures 5.65"H x 5.28"W x 3.27"D. Meets UL-1363-A for use in patient areas. Fits IV pole diameter 7/8"-1 1/2". 15 foot hospital grade power cord attached.



## MCM200 Series

### Add-A-Tray for IV Pole

MCM260

Add-A-Tray  
for IV Pole

This Stainless Steel Tray measures 13" x 9" and attaches to the IV Pole with our Universal Clamp MCM231 (*sold separately*). Excellent spot to put small instruments or items during set up. Stainless steel construction makes it easy to clean. With our universal clamp can easily mount to tables, mayo stands or carts.

Mounts with Universal Clamp  
(*sold separately*)

[SEE PAGE 29](#)



## MCM200 Series

### Infusion Pump Frame for IV Pole

MCM259

Infusion Pump  
Frame for IV Pole

This frame attaches to an IV Pole with two universal clamps (*sold separately*). Designed to hold up to 4 infusion pumps. 1" tubular frame in chrome construction. Measures 17 3/4" x 27 3/4".

Mounts with 2 Universal Clamps  
(*sold separately*)

[SEE PAGE 29](#)



## MCM200 Series

### Oxygen Tank Holder for IV Pole

MCM229

Oxygen Tank Holder  
for IV Poles

Heavy duty stainless steel construction for holding Oxygen tanks on IV poles or anywhere the universal clamp can attach to. Attaches with 1 universal clamp (*sold separately*). Accommodates most styles of oxygen tanks up to 4 7/8" diameter.

Mounts with Universal Clamp  
(*sold separately*)

[SEE PAGE 29](#)

# IV Poles and Accessories



## MCM200 Series

### Wire Basket for IV Pole

Wire basket attaches to the IV Poles or any other tube with universal clamp *(sold separately)*. Opening is 6" x 12". Great for storage of just about anything and keeps it nearby.

MCM217

Wire Basket  
for IV pole

Mounts with Universal Clamp  
*(sold separately)*

**SEE PAGE 29**



## MCM200 Series

### Stat Hanger for IV Pole

An extra set of IV Pole hooks wherever you need them. All welded stainless steel construction. Mounts with universal clamp *(sold separately)*. Distance between hooks is 9".

MCM200

Stat Hanger for  
IV Pole

Mounts with Universal Clamp  
*(sold separately)*

**SEE PAGE 29**



## MCM200 Series

### Urinal Bag Hook

Stainless steel hook designed to hold the foley catheter bag lower on the IV Pole. Clamps directly to 1" pole. No other clamps needed.

MCM258

Urinal Bag Hook



## MCM200 Series

### Steering Wheel and Patient Tray for IV Pole

16" diameter epoxy coated steering wheel attaches to 1" IV Pole. Makes it easy to steer pole from any side. Gives patient added stability in transport. Large diameter makes it easy to patient and caregiver to hold onto pole. Can be adjusted to any height. Easy to clean, plastic patient tray snaps easily into triangle on steering wheel.

MCM230

Steering Wheel

MCM243

Patient Tray



## MCM200 Series

### Hand Sanitizer Holder for IV Pole

Keep the hand sanitizer handy on your IV Pole or wheelchair. Attached to pretty much any surface without any other clamps needed. Easily adjusts to various sizes of hand sanitizer bottles. Durable plastic construction.

MCM261

Hand Sanitizer  
Holder for IV Pole



# Index

## A

- Accessories for OR Tables . . . 25–32
- Accessory and Stirrup Carry Cart . . . 32
- Add-A-Rail . . . 39
- Additional OR Equipment . . . 15–18
- Anesthesia Cart . . . 9
- Anesthesia Screen
  - Adjustable . . . 29
  - Malleable . . . 29
  - Rigid . . . 29
- Arm and Hand Surgery Tables . . . 33–40
- Arm and Hand Tables
  - Carbon Fiber Rectangle . . . 34
  - Carpal . . . 34
  - Free Access . . . 34
  - Hourglass Phenolic . . . 36
  - Hourglass Under Pad . . . 38
  - Mobile Base
    - Rectangle . . . 37
    - Hourglass . . . 37
  - Rectangle Carbon Fiber . . . 35
  - Rectangle Phenolic . . . 35
  - Rectangle Under Pad . . . 38
- Armboards
  - Droplatch
    - Bariatric . . . 26
    - Standard . . . 26
  - Pads . . . 27
  - Radiolucent Height Adjustable . . . 26
  - Under Pad . . . 27
  - Wall Mount . . . 27

## C

- Candy Cane Stirrup . . . 30
- Carbon Fiber Arm and Hand Tables
  - Hourglass . . . 36
  - Rectangle . . . 36
- Carry Cart
  - Step Stool . . . 17
  - Stirrup . . . 17
- Clark Socket . . . 28
  - Elite . . . 28

## D

- Double IV Pole . . . 46
- Double Picket Fence Leg Holder . . . 31

## E

- Elite Clark Socket . . . 28
- Equalizing Device . . . 39

## G

- Glove Boxes . . . 24
- Gowning Benches . . . 18

## H

- Hampers
  - Round . . . 21
  - Square . . . 21
  - Triangle . . . 21
- Horizontal Traction Towers . . . 39
- Hose Tree . . . 31

## I

- Insta-Rail . . . 32
- Instrument Tables
  - Nested . . . 7
  - with Drawers . . . 9
  - with H-brace . . . 7
  - with Shelf . . . 7
- IV Pole Accessories
  - Add-A-Tray . . . 48
  - 5 Leg Foot Control . . . 46
  - Power Strip . . . 48
  - Rigid . . . 46
  - Hand Sanitizer Holder . . . 49
  - Infusion Pump Frame . . . 48
  - Oxygen Tank Holder . . . 48
  - Stat Hanger . . . 49
  - Steering Wheel and Patient Tray . . . 49
  - Urinal Bag Hook . . . 49
  - Wire Basket . . . 49
  - Universal Clamp . . . 47
- IV Pole Buying Guide . . . 44–45
- IV Poles
  - 5 Leg Space-Saving . . . 42
  - Economy
    - 5 Leg . . . 42
    - 6 Leg . . . 42
  - Lift Assist . . . 47
  - Spider
    - 5 Leg . . . 43
    - 6 Leg . . . 43
- IV Poles and Accessories . . . 41–49
- IV Towbar . . . 47

## K

- Kick Bucket . . . 16

## L

- Lift Assist Tables . . . 14

## M

- Mayo Stands . . . 11–14
  - Foot Control . . . 12
  - Knob Control . . . 13
  - Thumb Control . . . 13
- Mayo Tray Attachment . . . 31

## P

- Patient Transfer Roller Boards . . . 22
  - Replacement Covers . . . 23
  - Wall Rack . . . 22
- Picket Fence Leg Holder . . . 30

## R

- Replacement Pads . . . 39
- Rigid IV Pole . . . 46

## S

- Side Rail Extension . . . 32
- Side Rail Socket
  - Aluminum . . . 28
  - Stainless Steel . . . 28
- Single Loop Leg Prep with Pad . . . 30
- Slider Style Patient Transfer Boards . . . 22
  - Wall Rack . . . 23
- Solution Stands
  - Double Bowl . . . 16
  - Single Bowl . . . 16
- Spider Base IV Poles
  - 6 Leg . . . 46
- Sponge Receptacle . . . 16
- Stainless Steel Tables . . . 5–10
- Step Stool
  - Stacking Interlocking . . . 17
- Step Stools
  - Chrome . . . 17
- Stools
  - Physicians . . . 18
  - Surgical . . . 18

- Storage, Transfer and Transport . . . 19–24
- Surgical Stools . . . 18

## T

- Tables for over OR Tables . . . 9
- TKR Support . . . 30

## U

- Uni-Pole . . . 47
- Universal Clam
  - Lift Assist IV Pole . . . 48
- Universal Rail Clamp . . . 29
- Utility Cart
  - with Baskets . . . 20
- Utility Carts . . . 20
- Utility Tables . . . 8

## W

- Wall Shelves . . . 24
- Width Extender . . . 31
- Work Tables . . . 10

## TESTIMONIALS

*"The safe descend feature of the mayo stand is very impressive. I can't find it anywhere else."*

*"The square leg design of their tables is what I like. It is a better design and makes a great table overall."*

*"Excellent people, excellent product. Mid Central has always been reliable and a pleasure to deal with."*





632 Hwy 59,  
Pembina, ND, 58271

1 888 844 6252

[midcentralmedical.com](http://midcentralmedical.com)

