

seca XLine

seca
Precision for health

A NEW DIMENSION IN PATIENT CARE



Available in three configurations – Base, Hold, and Stretch – the seca XLine now includes a new ADA-compliant variant of the XLine Hold, purpose-built to provide accessible weighing for individuals with diverse mobility needs. Its extra-large platform and ultra-low access height support a wide range of mobility devices, from wheelchairs to transport chairs. With direct EMR-Validated Integration, the seca XLine ensures fast, reliable data capture to streamline clinical workflows.

Helping you Help.

seca XLine Base

The seca XLine features an extra-low profile to accommodate patients in bariatric wheelchairs, transport chairs, and scooters, minimizing the effort required to move patients on and off the scale.



Ultra-low profile: platform height of just 2.2 inches



- 1,100 lbs / 500 kg capacity
- Extra-large platform
- Low-profile incline
- Safety guardrails
- Optional third ramp
- Direct EMR-Validated Integration: Enhances dosing accuracy and reduces documentation errors with real-time weight transmission

Tare-by-Scanning Functionality

Simplify the weighing process by taring out the weight of wheelchairs, transport chairs, stretchers, and gurneys easily using barcode scanning.



Link to barcode generator

1



Scan the barcode for specific wheelchairs and stretchers

2



Preset weight of the wheelchair or stretcher is tared out

3



Patient net weight is displayed immediately

ADA-Compliant Bariatric Wheelchair

- 43.3" wide x 43.3" deep platform
- 2.5" edge protection
- 1:8 running slope
- Slip-resistant platform surface
- Antimicrobial full-length handrail
- 37.1" handrail height
- 1,100 lbs / 500 kg capacity



seca XLine Hold

Improve patient safety with an antimicrobial-coated handrail, ensuring infection control and sturdy support.

- 1,100 lbs / 500 kg capacity
- Handrail mounted display
- Low-profile incline
- Fold-down handrail with built-in castors for easy storage and transport
- Optional third ramp
- Direct EMR-Validated Integration: Enhances dosing accuracy and reduces documentation errors with real-time weight transmission



**Our Newest Addition –
Wall Mounted Fold-up Wheelchair Scale**



The wall-mounted zero footprint design folds up flat to save critical floor space in tight, high-traffic care areas.

Image contains optional barcode scanner from a third-party vendor.



Enhanced seca ID-Display™

- Improved User Guidance: easy and intuitive
- New Tare Assistant: smart tare handling
- Improved Scan Workflow: faster patient ID recognition
- Built-in Error Assistance: with direct links to seca service resources



seca XLine Stretch

In time-sensitive scenarios, accurately measure patient weights without depending on verbal estimations. Whether during emergency admissions, dialysis, or critical assessments of bedridden patients, the seca XLine Stretch ensures a seamless and uninterrupted weighing process.

- 2,200 lbs / 1,000 kg capacity
- Guardrails for enhanced safety
- XL width for stretchers and gurneys
- Low-profile incline
- Direct EMR-Validated Integration: Enhances dosing accuracy and reduces documentation errors with real-time weight transmission

NEW

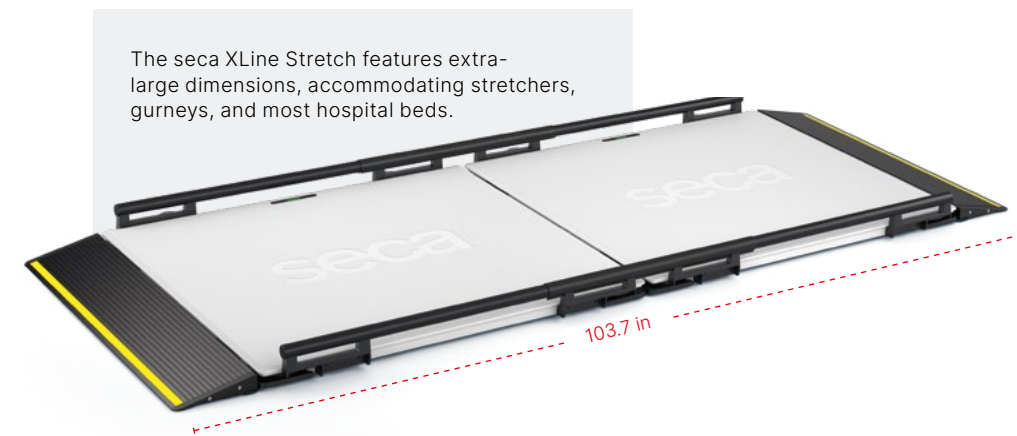
seca XLine Fold

Secure wall-mounting and gas-spring powered deployment eliminate heavy lifting, pinching, and strain – keeping nurses safe from the start. The ultra-low profile and third ramp enable smooth, multi-directional access for all patient types. Smart features include a Pre-TARE memory to store up to three preset deductions – ideal for commonly used mobility aids.



- Effortless fold down design eliminates lifting, pinching and strain
- 1,100 lbs / 500 kg capacity
- Built to handle bariatric demands
- Oversized platform with three-way access

- Smart functions: weight recall, re-weigh and Tare-by-Scanning
- Direct EMR-Validated Integration: Enhances dosing accuracy and reduces documentation errors with real-time weight transmission



The seca XLine Stretch features extra-large dimensions, accommodating stretchers, gurneys, and most hospital beds.

Tailoring Your Solution

Explore the Ideal XLine Model for Your Specific Needs.



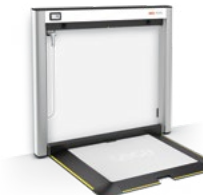
seca XLine Base

seca XLine Hold

Order code	ON SWX INB NN	ON SWX INT NN	ON SWX IRB NN	ON SWX IRT NN
Capacity	1,100 lbs / 500 kg		1,100 lbs / 500 kg	
Graduation	0.2 lb / 100 g		0.2 lb / 100 g	
Dimensions (WxHxD)	48.4 x 4.7 x 60.2" / 1,230 x 120 x 1,530 mm		48.4 x 4.5 x 60.2" / 1,230 x 1,130 x 1,530 mm	
Dimensions when folded (WxHxD)	43.3 x 2.2 x 43.3" / 1,100 x 55 x 1,100 mm		43.3 x 2.2 x 43.3" / 1,100 x 55 x 1,100 mm	
Platform (WxHxD)	43.3 x 2.2 x 43.3" / 1,100 x 55 x 1,100 mm		43.3 x 2.2 x 43.3" / 1,100 x 55 x 1,100 mm	
Net weight	97 lbs / 44 kg		114.6 lbs / 52 kg	
Display type	with Basic Display	with ID-Display™	with Basic Display	with ID-Display™
Display cable length	118" / 3 m			
Power supply	Batteries, Power adapter	Power adapter	Batteries, Power adapter	Power adapter
Functions	TARE, Pre-TARE, HOLD, Auto-HOLD, CLEAR, Auto-CLEAR, RESET, lbs/kg switch-over, lbs/kg switch-over lock, cm/inch switch-over, Adjustable damping, BMI, BSA (Body surface area), Standby mode		TARE, Pre-TARE, HOLD, Auto-HOLD, CLEAR, Auto-CLEAR, RESET, lbs/kg switch-over, lbs/kg switch-over lock, cm/inch switch-over, Adjustable damping, BMI, BSA (Body surface area), Standby mode	
	EMR-validated integration, Wi-Fi, Ethernet, USB for barcode scanner (third-party supplied), Display of user and patient name or ID, Display of patient date of birth, Recall		EMR-validated integration, Wi-Fi, Ethernet, USB for barcode scanner (third-party supplied), Display of user and patient name or ID, Display of patient date of birth, Recall	
Product configuration	Platform scale seca 604, Two ramps seca 404, Guardrail seca 446, Guardrail with castors seca 448, Display holder seca 476, Basic display seca 495	Platform scale seca 604, Two ramps seca 404, Guardrail seca 446, Guardrail with castors seca 448, Display holder seca 476, ID-Display™ seca 496	Platform scale seca 604, Two ramps seca 404, Guardrail seca 446, Basic display seca 495, Handrail seca 442	Platform scale seca 604, Two ramps seca 404, Guardrail seca 446, ID-Display™ seca 496, Handrail seca 442
Optional accessory	Third ramp seca 405	Third ramp seca 405	Third ramp seca 405	Third ramp seca 405



seca XLine Hold (ADA-Compliant)



seca XLine Fold



seca XLine Stretch

Order code	ON SWX ADA NN	6203400009	ON SBX INT NN
Capacity	1,100 lbs / 500 kg		2,200 lbs / 1,000 kg
Graduation	0.2 lb / 100 g		0.2 lb / 100 g
Dimensions (WxHxD)	77.2 x 44.4 x 50.8" / 1,960.5 x 1,127 x 1,290 mm		48.42 x 4.72 x 103.97" / 1,230 x 120 x 2,640 mm
Dimensions when folded (WxHxD)	43.3 x 2.2 x 43.3" / 1,100 x 54.6 x 1,100 mm		43.3 x 2.2 x 43.3" / 1,100 x 55 x 1,100 mm
Platform (WxHxD)	43.3 x 2.2 x 43.3" / 1,100 x 54.6 x 1,100 mm		43.3 x 2.2 x 43.3" / 1,100 x 55 x 1,100 mm
Net weight	202.8 lbs / 92 kg		169.75 lbs / 77 kg
Display type	with ID-Display™		with ID-Display™
Display cable length			118" / 3 m
Power supply	Power adapter		Power adapter
Functions	TARE, Pre-TARE, HOLD, Auto-HOLD, CLEAR, Auto-CLEAR, RESET, lbs/kg switch-over, lbs/kg switch-over lock, cm/inch switch-over, Adjustable damping, BMI, BSA (Body surface area), Standby mode		TARE, Pre-TARE, HOLD, Auto-HOLD, CLEAR, Auto-CLEAR, RESET, lbs/kg switch-over, lbs/kg switch-over lock, cm/inch switch-over, Adjustable damping, BMI, BSA (Body surface area), Standby mode
	EMR-validated integration, Wi-Fi, Ethernet, USB for barcode scanner (third-party supplied), Display of user and patient name or ID, Display of patient date of birth, Recall		EMR-validated integration, Wi-Fi, Ethernet, USB for barcode scanner (third-party supplied), Display of user and patient name or ID, Display of patient date of birth, Recall
Product configuration	Platform scale seca 604, Handrail seca 442, Guardrail seca 446, ID-Display™ seca 496, Two ramps seca 404, Two overlay ramps seca 406	ID-Display™, Third ramp, Barcode Scanner Holder, Security Lock	Two platform scales seca 604, Two ramps seca 404, Two guardrails seca 446, Two guardrails with castors seca 448, Display holder seca 476, ID-Display™ seca 496
Optional accessory	RS-232 Interface		

Advancing Acute Care into New Dimensions

On average, the XLine Base, XLine Hold and XLine Fold offers 70% more platform space compared to other wheelchair scales.



Seamless Direct EMR-validated Integration

Upon identification with a barcode scanner, the ID-Display reveals the patient's ID, user ID, and date of birth. With a push of a button, you send measurements directly into the digital patient file.

Find out more about how seca EMR solutions help to create a zero-incident environment:

seca.com/integration



Designed With Nursing Professionals in Mind

Biomedical
Engineer
Approved



Key Features That Make All the Difference!

Enhanced Safety

1. Direct EMR-Validated Integration: Enhances dosing accuracy and reduces documentation errors with real-time weight transmission.
2. Weight recall function for the last patient measurement.
3. Antimicrobial-coated handrail, ensuring infection control and sturdy support.
4. Yellow-Marked Safety Ramps: Clearly visible ramps reduce the risk of accidental tripping – supporting both patient and staff safety.

Advanced Capability

5. Wider platforms and lower-profile ramps for bariatric wheelchairs and varied patient mobility needs.

Versatility

6. Space-saving design with built-in castors for easy transport and storage.

Durability

7. Biomed Approved! Built to withstand the rigors of hospital environments.

Space-saving

8. Gas-spring powered deployment eliminates heavy lifting, pinching, or strain.

