



CARTS  
SHELVING  
WORKCENTERS



# Lionville®

## MEDICATION CARTS

- Med 800
- Med 600
- Med 400
- Transfer

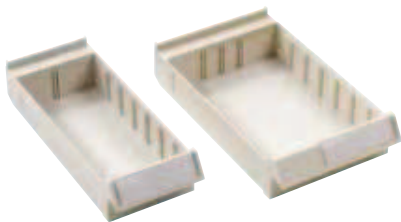


# The power of exchange.

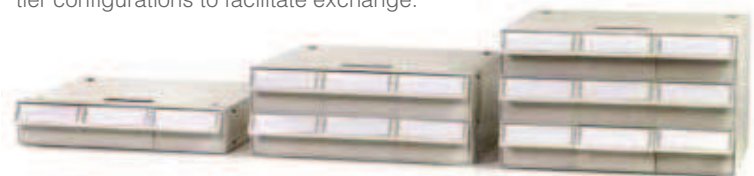
Our signature Lionville Cassette Exchange System provides pharmacy and nursing with the security and control required to universally manage their patients' medications. Drawers accommodate robotic pharmacy systems, various unit dose packaging, multi-dose styles, bulk medications, and narcotics. The Lionville Cassette Exchange System features a unique, universal-fit design, allowing facilities to utilize the cassettes throughout their entire fleet.



Large patient drawers in two widths, 5" (127mm) and 7.5" (191mm) have interchangeable clear face plates to hold name tags. Divider channels allow drawers to be segmented. 7.5" (191mm) wide drawers are robot-compatible.



Reinforced exchange cassettes are available in one, two, three or four tier configurations to facilitate exchange.



Medication solutions that move with you from the pharmacy to the patient bedside.



Basic touchpad unlocking system is a basic upgrade for all Lionville Series Medications carts.

Various card readers can be added to carts with full feature touchpad, including magnetic stripe and proximity. Reader options allow the cart to be unlocked by swiping an authorized card with or without an optional PIN.

# The tools to protect.

## TOUCHPAD ADVANCED OPTIONS:

- Basic Touchpad Unlocking
  - With Optional Automatic Locking
  - Two IDs
- Full Feature Touchpad Unlocking
  - Lighted Display
  - Up to 1998 IDs
  - Secondary Pin Option
  - Automatic Locking With Motion Sensor
  - Detailed Activity Reports
  - Optional Card Reader Unlocking
  - Optional Keypad Controlled Narcotic Drawers
  - Optional Software Audit and Programming Option

## Comprehensive Security Systems

Our cart security systems start with the basics: a front access control panel with a key lock and a color-coded re-lock handle within easy reach. Combine these basics with a patented (US Patent # 6511138) drawer “grabber” locking system that provides assurance that patient drawers that look locked are locked.



LMPOD Side POD (See page 209)

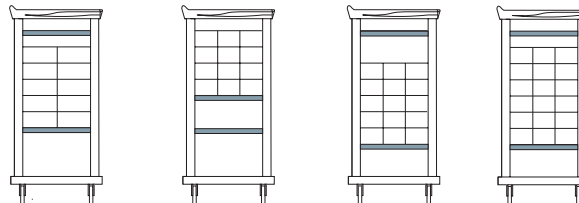
**Med 800 Medication Cart**

Compact Size - Low Ratio, Good Mix

FEATURES:

- > 9-tier Capacity – Up to 27 Patient Drawers.
- > Versatile Storage Options.
- > Side Storage Recess with Pull-Out Tray.
- > Small Footprint (23.5"W x 22"L X 41.1"H) (597mm x 558mm x 1044mm).

MULTIPLE CONFIGURATIONS AVAILABLE



LM330L Rear Shelving (See page 209)

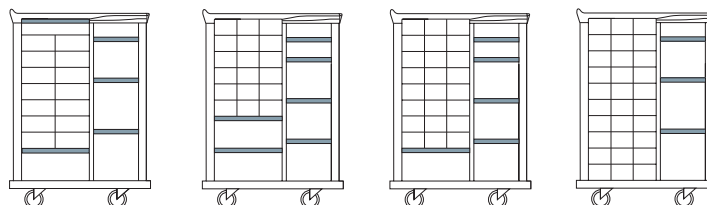
**Med 600 Medication Cart**

Optimum Versatility - Ideal Size and Capacity

FEATURES:

- > 10-tier Capacity – Up to 30 Patient Drawers.
- > Ample Work/Storage Space.
- > Ergonomic Design.
- > Mid-sized (23.5"W x 32.6"L x 41.1"H) (597mm x 829mm x 1044mm).

MULTIPLE CONFIGURATIONS AVAILABLE



LMBIN7 Cassette Bin (See page 208)

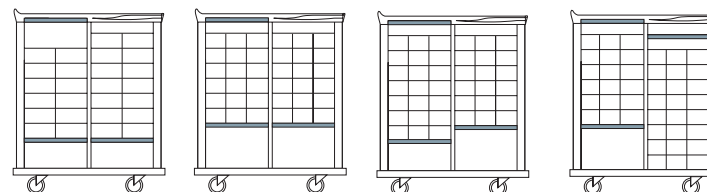
**Med 400 Medication Cart**

Exceptional Work Space - More Patient Capacity

FEATURES:

- > 19-tier Capacity – Up to 57 Patient Drawers.
- > Efficient Side-by-side Design.
- > Ergonomic Work Area.
- > Ample Size (23.5"W x 39.1"L x 41.1"H) (597mm x 994mm x 1044mm).

MULTIPLE CONFIGURATIONS AVAILABLE



To configure a Lionville® Med Cart unit to your exact specifications, please visit [www.metroconfigurator.com](http://www.metroconfigurator.com).



## Cart Bodies

Description	WxH	Cat. No.
Med 800 Key Lock	22 x 41 (558mm x 1041mm)	<b>LMED800</b>
Med 800 Key Lock, with Rack	22 x 41 (558mm x 1041mm)	<b>LMED800R</b>
Med 600 Key Lock, 30"Left Int. Ht.	32 x 41 (813mm x 1041mm)	<b>LMED600</b>
Med 600 Key Lock, 27"Left Int. Ht, Tray Ready	32 x 41 (813mm x 1041mm)	<b>LMED600-27</b>
Med 400 Key Lock, 30"Left- 27"Right Int. Ht.	39 x 41 (991mm x 1041mm)	<b>LMED400</b>
Med 400 Key Lock, 30"Left- 27"Right Int. Ht. with Rack	39 x 41 (991mm x 1041mm)	<b>LMED400R</b>
Grounding Cable Med Cart, No Power		<b>LM334*</b>

\* Grounding cable gets configured on all non-powered carts. Ground cable is included in power kits for powered carts.



LMKEY48, LMKEY6



LM410/LM411

## Cart Locking

Description	Cat. No.
Lock Cover	<b>LMLOCKCVR</b>
Key Lock Cart Label Kit for 400 or 900 Cart	<b>LMKEY48</b>
Key Lock Cart Label Kit for 600 Cart	<b>LMKEY6</b>
Autolock For Key Lock Med Cart	<b>LMKEY-AL** F</b>
Wall Lock Kit — Locks Cart To Wall	<b>LM399 F</b>
Basic Electronic Lock Touchpad, Non-Rechargeable	<b>LM410 F</b>
Basic Electronic Lock Touchpad, Non-Rechargeable for 600 Med Cart	<b>LM410-6 F</b>
Basic Electronic Lock Touchpad with Autolock	<b>LM411 F</b>
Basic Electronic Lock Touchpad with Autolock for 600 Med Cart	<b>LM411-6 F</b>
Charger Adaptor Kit — Must Use for Outside North America	<b>LM419A F</b>
Advanced Electronic Lock LCD Touchpad with Autolock	<b>LM420 F</b>
Advanced Electronic Lock LCD Touchpad with Autolock for 600 Med Cart	<b>LM420-6 F</b>
Cart Management Software, Local USB	<b>LM421</b>
Proximity Card Reader, 125KHz Farpointe/HID	<b>LM430P125K F</b>
Proximity Card Reader, 13MHz, HID Iclass	<b>LM430P13M F</b>
Magnetic Stripe Card Reader, Track 1 & 2	<b>LM432M F</b>
Factory Pre-Wire Cart for Card Readers	<b>LM43X-READY F</b>

\* The Keylock Cart Label gets configured on keylocking only carts. The touchpad takes the place of this label on touchpad carts.

\*\* The LMKEY-AL can be configured on keylocking only carts, to allow for auto-relocking without a touchpad.

F Factory Installed



LM420-6 with LM430P13M



LM432M

Lionville Med Carts are built to exact customer specifications, therefore, they are non-cancelable, non-returnable.

## CART DRAWERS



LM109 (Shown with dividers)



LM103

LM106

LM112

(Shown with LMDPM-VL, violet drawer pulls)

### Drawers — 800, 600, 400 Series

Drawer pulls ordered separately.

Description	Standard Drawer	Keylock* CS Drawer	Electronic Lock** CS Drawer
Cassette Shelf/CS Drawer Barrier	<b>LM101†</b>		
Keyboard Tray, Front Opening (Replaces Top Tier)	<b>LM102</b>		
3" (76mm) Drawer	<b>LM103</b>	<b>LM103KL</b>	<b>LM103EL</b>
6" (152mm) Drawer	<b>LM106</b>	<b>LM106KL</b>	<b>LM106EL</b>
6" (152mm) Drawer, Polymer	<b>LM106-POLY</b>		
9" (229mm) Drawer	<b>LM109</b>	<b>LM109KL</b>	<b>LM109EL</b>
12" (305mm) Drawer	<b>LM112</b>	<b>LM112KL</b>	<b>LM112EL</b>

Drawer Dimensions: 11.625"W x 15"L (295mm x 381mm)

\* Key locking drawer is in addition to the cart lock, providing second lock for controlled substance requirements.

\*\*Electronic locking drawer is in addition to the cart lock, providing second lock on drawer for controlled substance requirements.

Can only be configured on carts with LM420 or LM420-6.

†The LM101 creates a barrier from access when a standard drawer is open above the locking drawer.



LM108-6 (Shown with dividers)

### Drawers — 600 Series Right Side

Drawer pulls ordered separately.

Description	Standard Drawer	Keylock* CS Drawer	Electronic Lock** CS Drawer
CS Drawer Barrier	<b>LM101-6†</b>		
4" (102mm) Drawer	<b>LM104-6</b>	<b>LM104-6KL</b>	<b>LM104-6EL</b>
8" (203mm) Drawer	<b>LM108-6</b>	<b>LM108-6KL</b>	<b>LM104-6EL</b>
10" (254mm) Drawer	<b>LM110-6</b>	<b>LM110-6KL</b>	<b>LM108-6EL</b>

Drawer Dimensions: 19"W x 8.625L (483mm x 219mm)

\* Key locking drawer is in addition to the cart lock, providing second lock for controlled substance requirements.

\*\*Electronic locking drawer is in addition to the cart lock, providing second lock for controlled substance requirements.

Can only be configured on carts with LM420-6.

†The LM101 creates a barrier from access when a standard drawer is open above the locking drawer.

To configure a Lionville® Med Cart unit to your exact specifications, please visit [www.metroconfigurator.com](http://www.metroconfigurator.com).



**800, 600, 400 Series — Drawer Dividers**

Description	Cat. No.
Divider Set, Multiflex, for 3"H (76mm) Drawer, 3 Channels and 9 T-Dividers	<b>LM113</b>
Extra "T" Dividers, 25 Per Pack	<b>LMT-CLIP</b>
Divider Set, Clear for 3"H (76mm) Drawer, 2 Side-Side, 2 Front-Back	<b>LM141*</b>
Divider Set, Clear for 6"H (152mm) Drawer, 2 Side-Side, 2 Front-Back	<b>LM142*</b>
Divider Set for 2 Tier Abs Storage Drawer, 2 Side-Side, 2 Front-Back	<b>LM142-POLY*</b>
Extra Side-Side Divider for LM141, qty. 1	<b>LM143</b>
Extra Front-Back Divider for LM141, qty. 1	<b>LM144</b>
Extra Side-Side Divider for LM142, qty. 1	<b>LM145</b>
Extra Side-Side Divider for LM142-POLY	<b>LM145-POLY</b>
Extra Front-Back Divider for LM142, qty. 1	<b>LM146</b>
Extra Front-Back Divider for LM142-POLY	<b>LM146-POLY</b>
Divider Set, Clear for 9"H (229mm) Drawer, 2 Side-Side, 2 Front-Back	<b>LM147*</b>
Extra Side-Side Divider for LM147, qty. 1	<b>LM148</b>
Extra Front-Back Divider for LM147, qty. 1	<b>LM149</b>
Divider Set, Clear for 12"H (305mm) Drawer, 2 Side-Side, 2 Front-Back	<b>LM176</b>
Extra Side-Side Divider for LM176, qty. 1	<b>LM177</b>
Extra Front-Back Divider for LM176, qty. 1	<b>LM178</b>

\*Maximum 3 dividers Front-Back or Side-Side, per drawer.



LM113



LM141



LM142

**600 Series Right Side Drawer Dividers**

Description	Cat. No.
Divider Set, Clear for 4"H (101mm) 600 Drawer, 2 Side-Side, 1 Front-Back	<b>LM113-600*</b>
Extra Side-Side Divider for LM113-600, qty. 1	<b>LM171</b>
Extra Front-Back Divider for LM113-600, qty. 1	<b>LM172</b>
Divider Set, Clear for 8" & 10"H (203mm & 254mm) 600 Drawer, 2 Side-Side, 1 Front-Back	<b>LM173</b>
Extra Side-Side Divider for LM173, qty. 1	<b>LM174</b>
Extra Front-Back Divider for LM173, qty. 1	<b>LM175</b>

\*Maximum 5 dividers Side-Side, 1 Front-Back, per drawer.

**Drawer Pulls — 800, 600, 400 Series**

Description	800,600,400	600 Right Side
Med Drawer Pull Cobalt Blue	<b>LMDPM-CB</b>	<b>LMDP6-CB</b>
Med Drawer Pull Green	<b>LMDPM-GR</b>	<b>LMDP6-GR</b>
Med Drawer Pull Slate Blue	<b>LMDPM-SB</b>	<b>LMDP6-SB</b>
Med Drawer Pull Taupe	<b>LMDPM-TPE</b>	<b>LMDP6-TPE</b>
Med Drawer Pull Violet	<b>LMDPM-VL</b>	<b>LMDP6-VL</b>

To configure or order, select one drawer pull per drawer.



LM173

Lionville Med Carts are built to exact customer specifications, therefore, they are non-cancelable, non-returnable.

# CASSETTE AND BINS



LMCASS1-5

LMCASS2-55

LMCASS3-555

## Cassette and Bins

Description	Cat. No.
Cassette Shelf	LM101*
Cassette 1 Level Empty	LMCASS1
Cassette 2 Level Empty	LMCASS2
Cassette 3 Level Empty	LMCASS3
Cassette 1 Level W/ 3 - 5"W Bins (127mm)	LMCASS1-5
Cassette 1 Level W/ 2 - 7.5"W Bins (191mm)	LMCASS1-7
Cassette 2 Level W/ 3 - 5"W (127mm) & 2 7.5"W Bins (191mm)	LMCASS2-57
Cassette 2 Level W/ 4 - 7.5"W Bins (191mm)	LMCASS2-77
Cassette 2 Level W/ 6 - 5"W Bins (127mm)	LMCASS2-55
Cassette 3 Level W/ 3 - 5"W (127mm) & 4 7.5"W (191mm) Bins	LMCASS3-577
Cassette 3 Level W/ 6 - 5"W (127mm) & 2 7.5"W (191mm) Bins	LMCASS3-755
Cassette 3 Level W/ 6 - 7.5"W Bins (191mm)	LMCASS3-777
Cassette 3 Level W/ 9 - 5"W Bins (127mm)	LMCASS3-555
Cassette 4 Level W/ 8 - 7.5"W Bins (191mm)	LMCASS4-7777
Cassette 4 Level W/ 12 - 5"W Bins (127mm)	LMCASS4-5555
Cassette Bin 5"W (127mm), Set of 6	LMBIN5
Cassette Bin 7.5"W (191mm), Set of 4	LMBIN7



600 Series with Cassettes and Drawers

## Cassette Bin Accessories

Description	Cat. No.
Bin Dividers, 5"W (127mm), (50/Pkg)	LMBIN5-DIV
Bin Dividers, Slotted, 5"W (127mm), (25/Pkg), for use with LMBIN-DIV11S	LMBIN5-DIV5S
Bin Divider Kit, Slotted, 6 Sets of Dividers, (24-5"W (127mm) & 6-11"L (279mm))	LMBIN5-DIVSKIT
Bin Dividers, 7.5"W (191mm), (50/Pkg)	LMBIN7-DIV
Bin Dividers, Slotted 4"W (101mm), (20/Pkg), for use with LMBIN-DIV11S	LMBIN7-DIV4S
Bin Dividers, Slotted 7.5"W (191mm), (20/Pkg), for use with LMBIN-DIV11S	LMBIN7-DIV7S
Bin Divider Kit, Slotted, 4 Sets of Dividers (4 Sets, 16-4"W (101mm), 4-7.5"W (191mm), 4-11"L (279mm))	LMBIN7-DIVSKIT
Cassette Bin Dividers, 11.25"L (285mm), (20/Pkg), for LMBIN5 or LMBIN7	LMBIN-DIV11
Cassette Bin Dividers, Slotted 11"L (279mm), (20/Pkg), for LMBIN5 or LMBIN7	LMBIN-DIV11S
Label for 5 (127mm) & 7.5 (191mm) Bin, 1 1/4"H, Fanfolded Paperboard, (2000/Pkg)	LMBIN-LBL
Label Holder for 5 (127mm) & 7.5 (191mm) Bin, (50/Pkg)	LMBIN-LH
Cassette Quick-Clips, (40/Pkg) for Combining Cassettes Onsite	LMCASSCLIP

\*Slotted bin dividers provide divider configurations in both length and width directions, to compartmentalize a patient bin.



LMBIN5 with LMBIN5-DIV



LMBIN5 and LMBIN7



LMBIN7 with LMBIN-DIV11

To configure a Lionville® Med Cart unit to your exact specifications, please visit [www.metroconfigurator.com](http://www.metroconfigurator.com).



**Cart Accessories — Top, Rear, Trays**

Description	Cat. No.
Pullout Tray, Right Side, 12" (305mm)	LM314-12
Pullout Tray Right Side, 18" (457mm)	LM314-18
Pullout Keyboard Tray, Right Side, 18"L (457mm), 400/800	LM314-18KB
IV Pole, Telescoping with 2 Hooks	LM316
Med Cart, Rear Cavity Shelving, (2) Shelves	LM330L
Drop-in Top Bin	LM331
Mini Waste Bag with Tie, 100/Pk, for LM331	LM331-BAG
Adjustable Med Cup Dispenser	LM332
Adjustable Water Cup Dispenser	LM332-WATER
Waste Bin, Tilt Out Rear, 19" (483mm) High, with Chute	LM340-19L
Waste Bin, Tilt Out Rear, 24" (610mm) High, with Chute	LM340-24
Disposable Waste Sleeves, 25/Pkg, for LM340-19L or LM340-24	LM340-SLEEVE
Halogen Night Light (Cart with Lockalert)	LM429*
Repl Top Mat for 400 Series, Clear Vinyl	LM400MAT**
Repl Top Mat for 600 Series, Clear Vinyl	LM600MAT**
Repl Top Mat for 800 Series, Clear Vinyl	LM800MAT**

\*Compatible only with cart with LockAlert Autolock option (LMKEY-AL, LM411(-6),LM420(-6))  
 \*\*One clear top mat is included with each cart.



LM314-18KB



LM330L



LM305L-AUS

**Outlet Strips with Cord Wrap**

Description	Cat. No.
Outlet Strip, Medical Grade 6 Outlets, 15' Cord, Holder	LM305L-6US*
Outlet Strip, Universal, 6 Outlets, 2 Meter, Type I Cord	LM305L-AUS**
Outlet Strip, Universal, 6 Outlets, 2 Meter, Type C Cord	LM305L-EU**
Outlet Strip, Universal, 6 Outlets, 2 Meter, Type L Cord	LM305L-IT**
Outlet Strip, Universal, 6 Outlets, 2 Meter, Type G Cord	LM305L-UK**

\*Antimicrobial and complies with UL1363A, for use in patient vicinity, 6 NEMA 5-15R-HG outlets.  
 \*\*Universal outlet strip 250V, 10Amp, with country specific cord.

**Side Pod & Side Pod Specific Accessories**

Description	Cat. No.
Side Pod for Med Cart	LMPOD
Side Pod with Top Tray & Top Bin with Lock, for Med Cart	LMPODK1
Side Pod with Top Tray & 3 Bins with Lock, for Med Cart	LMPODK3
Side Bin for Pod, Nonlocking	LMPODBIN
Cup Holder Shelf	LMPODCUP
Shelf with Ledge for Side Pod	LMPODHLF
Shelf, Tray with 3 Dividers for Side Pod	LMPODTRAY



LMPOD, LMPODTRAY,  
(3) LMPODBIN

**Side Pod/Side Bracket Accessories**

Description	Cat. No.
Side Accessory Bracket with Keyslots	LM205
Handle, Side Tubular, 1 pc.	LM207
Waste Basket & Holder, for Pod or Keyslot Bracket	LM221
Wastecan Bracket and Straps (No Holder)	LM223
Glove Box Holder, Single, for Pod or Keyslot Bracket	LM236
Glove Box Holder, Triple for Pod or Keyslot Bracket	LM237
Sharps Container Bracket with Straps, for Pod or Keyslot Bracket	LM250
Lockable Sharps Cabinet with Glove Holder, for Pod or Keyslot Brkt	LM251
Replacement Containers for LM251, 20, 5 Qt. Containers	LM252
Side Mounted Chart Holder, for Pod or Keyslot Bracket	LM576



(2) LM205, LM236

Lionville Med Carts are built to exact customer specifications, therefore, they are non-cancelable, non-returnable.