



PATIENT ROOM

OVERBED TABLE

The Lumex® Overbed Table combines an attractive, ergonomic design with features that reduce infection control issues by minimizing areas in which dust and dirt can accumulate. Manufactured with the lowest base in the industry, our Overbed tables move easily under most hospital beds or recliners.

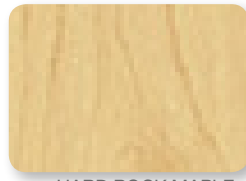
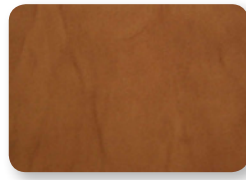
Features:

- Lowest profile base on the market
- Exposed Graphite Grey steel U base with no plastic cover allows for easy cleaning of base and casters
- Laminate or Thermofoil top that provides durability
- Easy, one-hand activated secondary surface reduces infection control issues and eliminates hidden spaces between surfaces for bacteria to collect
- Integrated accessories
- Integrated cup holders, and spill edge²
- Optional Vanity drawer with mirror slides out from either side of the table
- Shock-absorbent gas spring cylinder for easy height adjustment
- Two (2) Year Limited Warranty



Options:

* Item No.	Single Top	Single + Flip Top	Laminate Top	Thermofoil Top	Medium Oak, Hardrock Maple	Candlelight
GF9000-LSTM0	■	■			■	
GF9000-LSTHM	■		■			■
GF9000-LSTCL	■		■			■
GF9000-TSTM0	■			■	■	
GF9000-TSTHM	■			■		■
GF9000-TSTCL	■			■		■
GF9000-TDTM0		■		■	■	
GF9000-TDTHM		■		■		■
GF9000-TDTCL		■		■		■



Accessories:

* Item No.	Description
GF9000-BSK	Storage Basket with Adapter
GF9000-VNTY	Vanity Drawer with Mirror
GF9000-UH	Urinal Hook with Adapter
GF9000-CST	Non-Locking Caster

Specifications:

	Overall Width		Overall Depth		Overall Height Range				Main Top Width		Flip Top Width		Top Depth		Base Width		Base Depth		Base Profile Height		Product ⁸ Weight		Weight ¹ Capacity EVENLY DISTRIBUTED	
	inch	cm [†]	inch	cm [†]	inch	cm [†]	inch	cm [†]	inch	cm [†]	inch	cm [†]	inch	cm [†]	inch	cm [†]	inch	cm [†]	lb	kg [†]	lb	kg [†]		
Single Top	32.50	82.55	19.00	48.26	28.00	71.12	44.00	111.76	32.00	81.28	—	—	17.00	43.18	32.50	82.55	19.00	48.26	1.94	4.93	34	15.42	100	45.36
Flip Top	46.00	116.84	19.00	48.26	28.00	71.12	44.00	111.76	32.00	81.28	13.50	34.29	17.00	43.18	32.50	82.55	19.00	48.26	1.94	4.93	41	18.60	100	45.36

[†] standard rounding method used ¹ maximum weight capacity - evenly distributed - refer to user manual ² thermofoil tops only ⁸ approximate measurement, options may alter spec



GF Health Products, Inc. is an
intertek ISO 13485:2016 / MDSAP Certified Company

Color variations may occur due to monitor or printer settings.

+1 770.368.4700

Information contained herein is subject to change without notice.
The most current and complete product information can be found on our website.
www.grahamfield.com



© 2019, GF Health Products, Inc. All Rights Reserved.
Lumex is a registered trademark of GF Health Products, Inc.